



**Santa Cruz County
CA**

Approved as
recommended
Oct 26, 2021 6:30 PM

**Agenda Item
DOC-2021-909**


Public hearing to consider maps and plans proposed by the Advisory Redistricting Commission and members of the public, accept and file report on the 2021 Redistricting Process, and provide additional direction, as recommended by the County Administrative Officer

Information

Department:	County Administrative Office	Sponsors:	County Administrative Officer Carlos J. Palacios
Category:	CAO - Board Letter	Projects:	Master Calendar
Functions:	General Government		

Links

Reference [DOC-2021-752](#) : Accept and file report on the 2021 Redistricting Process and related timeline, including final Public Workshop and Public Hearing Schedules, as recommended by the County Administrative Officer

 **Reference** [DOC-2021-943](#) : Public hearing to consider submitted maps and plans, accept and file report on the 2021 Redistricting Process, provide additional direction establishing District boundaries, and hold the final Public Hearing on November 16, 2021, as recommended by the County Administrative Officer

Attachments

- [Board Memo](#)
- [Redistricting calendar - Attachment 1](#)
- [Redistricting Infographics - Attachment 1A](#)
- [COI forms and additional correspondence - Attachment 2](#)
- [County map with recommended boundary adjustments - Attachment 3](#)
- [Map with recommended boundary adjustments at East Harbor - Attachment 3A](#)
- [Map with recommended boundary adjustments at Apple Hill - Attachment 3B](#)
- [Data tables for recommended boundary adjustments - Attachment 3C](#)
- [Map submitted from the public - Attachment 4](#)
- [Plans discussed by ARC 21 members but not recommended - Attachment 5](#)

Financial Impact

No financial impact

Board Letter

Recommended Action(s):

- 1) Accept and file this report on the Redistricting of Supervisorial District boundaries;
- 2) Consider the proposed 2021 Supervisorial District Boundaries Map, as recommended by the County's Advisory Redistricting Commission;
- 3) Consider Community of Interest Forms (narratives) and a proposed map of Community of Interest testimony, as submitted by members of the public, which are attached and are

included in the public record of testimony;

- 4) Open the Public Hearing and receive testimony from the public;
- 5) Provide direction to staff on a final plan that would move forward for adoption;
- 6) Close the period for which redistricting maps and plans can be submitted by the public as of November 2, 2021, to permit these to be considered at the Third Public Hearing; and
- 7) Continue the Public Hearing to November 9, 2021, for a third hearing, and hold a fourth and final Public Hearing on November 16, 2021, as required under Elections Code Section 21507.1.

Executive Summary

On September 14, 2021, the Board scheduled a Public Hearing for today at 6:30 p.m. to consider a redistricting plan or plans recommended by members of the public and the County's Advisory Redistricting Commission (ARC 21), appointed by the Board pursuant to California Elections Code 23001. The following report provides an overview of the statutes that govern redistricting, a summary of the County's redistricting process to date including public outreach conducted by the County's Advisory Redistricting Commission, and presents the maps, with tables and descriptions, of the plan or plans that have been submitted by the ARC 21 and the public for consideration by the Board at today's Public Hearing. Per E Code 21507.1 the Board will continue the public hearing process to allow for additional public input on November 9th with the intention to consider adoption at the final public hearing on November 16, 2021.

Background

Legal Requirements in Brief - New Legislation guides the Redistricting Process

Every ten years, local governments are required to use updated federal census data to redraw their district lines to reflect how local populations have changed. In adopting updated supervisorial districts, the Board must comply with the requirements of the United States and California Constitutions, the federal Voting Rights Act of 1965 (52 U.S.C. Sec. 10301 et seq.), and California Elections Code Sections 21500 et seq. These authorities require that districts be based on total population and must have substantially equal population for each district. Additionally, the U.S. Supreme Court, in recent cases, has generally prohibited using race as a predominate criteria for redrawing districts or diluting the voting rights of racial minorities.

New state laws, AB 1276 (Bonta 2020), AB 849 (Bonta 2019), SB 1018 (Allen 2018), and AB 2172 (Weber 2018) established new redistricting requirements that applied to counties. The legislature's intent with each new law was to maximize public participation and increase transparency in the redistricting process.

In 2019, California adopted the "Fair and Inclusive Redistricting for Municipalities and Public Subdivisions (FAIR MAPS) Act. First, the FAIR MAPS act amended Elections Code Section 21500(c) to establish that updated supervisorial districts must be redrawn using the following criteria, in order of priority, each to the extent practicable: 1) supervisorial districts must be geographically contiguous; 2) the geographic integrity of neighborhoods and communities of interest must be respected in a manner to minimize divisions; 3) the division of cities or census designated places shall be respected to minimize divisions; 4) district boundaries must be easily identifiable and, if possible, bounded by natural and artificial barriers, streets, and/or county lines; and 5) district boundaries should encourage geographic compactness.

In all cases, districts cannot be drawn to favor or discriminate against any political party. Additionally, consideration of Community of Interests cannot include relationships with political parties, current incumbents, or political candidates.

Additionally, as outlined in Elections Code sections 21707.1 and 21508, the FAIR MAPS Act also requires the counties to establish a good faith and extensive outreach to gain public input throughout the redistricting process, especially for underrepresented and language minority communities. The County is required to hold at least four public hearings or workshops meeting the following requirements: one to be held prior to maps being drawn, two held after draft maps are drawn, and one of which is held on a weekend or after 6:00 p.m. on a weekday. All hearings must be noticed at least five days in advance, accessible to persons with disabilities, and if requested, provided with live translation in a language other than English. Finally, it established a required notice period of seven (7) days for any draft maps prior to adoption by a Board of Supervisors.

SB 1018 (Allen 2018) established the various types and specific criteria on who may serve on advisory, hybrid, or independent redistricting commissions.

AB 2172 (Weber 2018) provided that beginning in 2020, the State Department of Corrections and Rehabilitation must provide the last known place of residence of each inmate incarcerated in an adult correctional facility on April 1, 2020, so that this population can be reallocated from the Census Block of the prison's address to the Census Blocks of their home address.

This body of federal and state law both inform and shape the redistricting process for county supervisorial districts.

Analysis

The Redistricting Advisory Commission (ARC 21) and the County's Internal Leadership Group
On February 28, 2021, the Board established an Advisory Redistricting Commission (ARC 21) composed of a resident from each of the five supervisorial districts to make recommendations to the Board of Supervisors on any proposed changes to district boundaries. The County had utilized a similar redistricting advisory group for the past three efforts in 1991, 2001, and 2011. For the 2021 effort, the ARC 21 was convened under Elections Code section 23001 and followed all requirements under the Ralph M. Brown Act. Five members were appointed on April 13, with an alternative nominee for the Fifth District appointed on June 29, 2021. The members are as follows:

First District	Cheri O'Neil
Second District	Michael Watkins (Chair)
Third District	Kris Reyes
Fourth District	Peter Radin
Fifth District	James Mosher

To support the work of the ARC 21, the County Administrative Office formed an Internal Leadership Group comprised of staff from their office, County Counsel, Information Services, and County Clerk/Elections.

2021 Complications - Delayed Release of Population Data for Redistricting

In addition to integrating the new legislation as described above, all entities in California engaged in the redistricting process were impacted by the delay in the delivery of population data for redistricting (P.L. 94-171 data) from the 2020 Census. This included those entities working on redistricting for congressional districts, state assembly and senate districts, community college and special districts, cities, and counties. Counting persons during a global pandemic proved extremely problematic, which substantially delayed the release of redistricting data well past the customary release date of April 1st of the year after each Census Day.

Utilizing several workarounds, the Census Bureau was able to issue the P.L. 94-171 data to the States, in a legacy format, on August 12, 2021. On August 19th, California's Statewide Database

(SWDB) released reformatted data, now usable by counties.

As required by AB 2172, the SWDB completed the apportionment of the prison population by September 22nd, with a subsequent correction of that data on September 27th. Redistricting data was loaded into the County's current Geographic Information System (GIS) immediately upon its release, and Esri, the County's software vendor, downloaded the final data into the redistricting software and made it available for use on October 1st. Training on how to use the software was provided to the members of the Advisory Redistricting Commission through October 8th. GIS staff made the web-based mapping application available on the Redistricting website, along with instructions and links to YouTube videos to facilitate its use by the public.

While a substantial outreach program was undertaken as of mid-May 2021 when the County's Redistricting website went live and though the first of four public workshops beginning on September 1st, updates to county supervisorial district maps and plans could not be developed until the data was loaded into the redistricting mapping software on October 1, 2021.

Staff has previously reported that the deadline for counties to complete the redistricting process and adopt a map of new Supervisorial Districts is December 15, 2021. If not completed by this date, the county loses jurisdiction, and the process is completed by the Superior Court.

In comparison, for the 2011 effort, census data was available to the county during the first week of April with a final deadline of November 1, 2011. This afforded the County's advisory redistricting committee at the time a full 6 months during which plans could be considered and the public engaged prior to recommending maps or plans for the Board's consideration.

ARC 21's Public Engagement Plan - Implementing the Fair MAPS Act

On May 19, 2021, the ARC 21 convened the first of eleven public regular, Special, workshops and/or meetings to develop and implement the provisions of AB 849, the FAIR MAPS Act, which requires extensive outreach to gain public input throughout the process. The full calendar of meetings and workshops is included as Attachment 1.

Beginning with the launch of the County's Redistricting webpage on the County's website (www.santacruzcounty.us/Redistricting2021) on May 13th, the ARC 21's efforts to engage the public in the redistricting effort were substantial. A full menu of strategies, which were generally available in English and Spanish, were deployed including press releases, campaigns on social media, and email-based outreach, contacting nearly 100 County partners including schools, business, labor, and social organizations, and non-profit service providers. All outreach was designed to highlight web-based input via the website and drive attendance to the four Special Meeting and Public Workshops convened by the ARC 21. Staff worked with a local graphics firm to develop an Infographic with the tagline, "Get Involved" (Attachment 1A), which was widely distributed in both social media and email blasts.

The first of the four Public Workshops was kicked off on September 1st at the County Building, followed by workshops for mid-county residents at the Sheriff's Office Community Room in Live Oak on September 22nd, north-county residents at the Felton Branch Library on September 29th, and south-county residents at Starlight Elementary School on September 30th. Live Spanish language translation was provided at the meeting at Starlight Elementary School. All were conducted as evening weekday meetings beginning at 6:30 p.m. and participation was available both in-person and online via Zoom.

As provided under Elections Code (EC) section 21507.1 (a)(2)(e), county staff was permitted to conduct one of the pre-map Public Workshops in lieu of holding one of the four public hearings required by EC 21507.1(a). The Public Workshop/Special Meeting conducted by the ARC 21 and staff

on September 30th at 6:30 p.m. was noticed as Public Hearing #1. Therefore, today’s public hearing, while the first conducted by the Board of Supervisors, is the second in the series of four required.

Communities of Interest - A new way for residents to describe their community

The focus of the public workshops and the redistricting website was to encourage residents to describe their Community of Interest (COI). Per AB 849, this requires that, to the extent practical, districts must maintain the geographic integrity of neighborhoods and communities of interest. Elections Code section 21500(c)(2) defines a community of interest as a contiguous population which shares common social and economic interests that should be included within a single district for purposes of its effective and fair representation.

Examples of shared interest are those common to an urban, rural, or agricultural area, and they can be cultural communities with similar language and community celebrations. COIs are essentially self-defined and create a common story. COIs are not, for the purposes of redistricting, relationships with political parties, incumbents, or political candidates.

Beginning with the mid-May 2021 launch, the County’s redistricting website provided an opportunity to record, and if desired, map communities of interest. A copy of narrative descriptions and maps demonstrating those descriptions, received as of September 20, 2021, are included as Attachment 2. The four Public Workshops/Special Meetings convened by the ARC 21 also provided opportunities for conversation about COIs, and recordings of those statements are available on the Redistricting website.

In summary, there were several conversations by residents of the San Lorenzo Valley and environs that there are shared interests with residents in other rural, mountain/valley communities such as Bonny Doon. Several residents spoke to unifying the City of Scotts Valley in a single district. The Advisory Redistricting Commissioners regularly reviewed COI narratives and maps received, and there was a quorum of Commissioners that attended and witnessed the testimony delivered at each of the four public workshops. In addition, on their own, Commissioners discussed the redistricting project with residents in their districts and gathered in-person narratives about COIs.

Based on attendance at the Public Workshops, and the number of COI narratives received on the website, there is no question that the redistricting subject itself is competing with many other current issues and concerns of residents. Further, the updated census data presented modest population growth in the county generally, with no significant population imbalances across the current supervisorial districts.

The 2020 Population - Getting to Substantially Equal

Election Code Section 21500 states that “following each federal decennial census, and using that census as a basis, the board shall adjust the boundaries of any or all of the supervisorial districts of the county so that the supervisorial districts shall be substantially equal in population....” According to the 2020 Census data, the County has a population of 271,352, which when divided equally by the five Supervisorial Districts yields a target population of approximately 54,270 persons. The population of each of the five districts, with an indication of the deviation from the 1/5th calculation is provided in Table 1.

Table 1: Population by districts from 2020 Census data

District	Total Population	Target Population	Over - Under	Percent Over - Under	Hispanic or Latino	Not Hispanic or Latino
District 1	54,147	54,270	-123	-0.23	11,916	42,231
District	54,740	54,270	469	0.87	19,036	35,704

2						
District 3	56,380	54,270	2,109	3.89	13,390	42,990
District 4	53,878	54,270	-392	-.072	43,185	10,693
District 5	52,207	54,270	-2,063	-3.80	7,049	45,158

Recommended District Boundaries by the Advisory Redistricting Commission for 2021

After attending the multiple public workshops and taking into consideration the COI information submitted both online and during the workshops, the ARC 21 has advanced a Redistricting Plan for the Board’s consideration. Their direction also included a recommendation that GIS staff be authorized to make administrative changes necessary to ensure that the district lines follow parcel lines, rather than Census Block boundaries, where such deviation exists. This will preserve the integrity of the County’s Geographic Information System (GIS) to continue to be a parcel-based system and assist the County Clerk to conduct elections.

The ARC 21 met on October 6, 13, and 15, 2021, to consider and propose a 2021 Draft Map of Supervisorial Districts. During deliberations over these three meetings, consensus was reached on two changes to the existing Supervisorial District boundaries.

District Boundary Proposal A

The first is a change to the western boundary of District 1 to include portions of the East Harbor neighborhoods currently in District 3. The ARC 21 recommends that this portion be transferred from the Third to the First District. New district boundaries from north to south are Brommer Street Extension to Twin Lakes State Beach, and west to east from the City of Santa Cruz limits to Ninth Avenue. This proposal transfers 613 persons from District 3 to District 1. Table 2 demonstrates the new configuration to each District.

Table 2: Population for District 1 and 3 based on Proposal A

District	Population	Hispanic	% Hispanic	Non-Hispanic	% Non-Hispanic	Pop Over 18	% Over 18	Hispanic Over 18	% H Over 18
First	54,760	12,003	21.9	42,757	78.1	45,208	82.6	8,723	15.9
Third	55,767	13,303	23.8	42,464	76.1	48,893	87.7	11,058	19.8

District Boundary Proposal B

The second change currently proposed by the ARC 21 recognizes a boundary split that existed in a neighborhood in the Apple Hill district in unincorporated Watsonville, which separates residents of Silver Leaf and Green Meadow Drives into two Districts. This proposal cures the split and transfers a population of 491 from the 2nd to the 4th District, as shown in Table 3.

Table 3: Population for District 2 and 4 based on Proposal B

District	Population	Hispanic	% Hispanic	Non-Hispanic	% Non-Hispanic	Pop Over 18	% Over 18	Hispanic Over 18	% H Over 18
Fourth	54,369	43,547	80.1	10,822	19.9	39,303	72.3	30,009	55.2
Second	54,249	18,674	34.4	35,575	65.6	43,791	80.7	13,126	24.2

Effect of District Boundary Proposals

Proposals A and B reflect community of interest considerations and adhere to redistricting criteria including the federal criteria of substantially equal by bringing districts closer to the population target as can be seen in Table 4. Table 4 combines the recommended boundary adjustments from Proposal A and B and includes the percent over-under amounts from the Census 2020 data. As shown in Table 4, the percentage over/under target is improved through these proposals for Districts 1, 2, 3, and 4.

A county-wide map incorporating the new boundaries is Attachment 3, a detailed map of the change proposed at the East Harbor (Proposal A) is Attachment 3A, and the change proposed in the Apple Hill area (Proposal B) is Attachment 3B. Additionally, a detailed table with all the data sets required for the 2021 redistricting effort is Attachment 3C.

Table 4: Population by districts incorporating Proposal A and B with percent over-under comparison

District	Total Population	Target Population	Over - Under	% Over - Under Census	% Over - Under Proposed	Hispanic or Latino	Not Hispanic or Latino
District 1	54,760	54,270	490	-0.23	0.9	12,003	42,757
District 2	54,249	54,270	-21	0.87	-0.04	18,674	35,575
District 3	55,767	54,270	1,497	3.89	2.76	13,303	42,464
District 4	54,369	54,270	99	-0.72	0.18	43,547	10,822
District 5	52,207	54,270	-2,063	-3.80	-3.8	7,049	45,158

Consistency with the Legal Landscape

The Advisory Redistricting Commission confirms that the recommended map and plan are consistent with the U.S. Constitution requiring substantial equality, and the federal Voting Rights Act of 1965, which prohibits minority vote dilution that weakens the voting strength of minorities or prevents minorities from a fair chance to elect candidates of their choice. Further, the Commission believes that the proposed boundaries largely meeting the requirements of AB 849 in that they provide contiguity of district boundaries, encourage geographic compactness, provide boundaries that are relatively easy to identify, and respect and, in some cases, improve representation of communities of interest.

Lastly, while acknowledging that the local policy principles affirmed by the Board for 2021 are subservient to state and federal guidelines, ARC 21 members suggest that the recommended plan is consistent with the Board’s principal to move the existing Supervisorial District boundaries as little as possible to accomplish the goals of near equality. Of note, the recommended plan continues the trend from prior efforts that the County’s four incorporated cities are represented by at least two Supervisors. Absent any information to the contrary, Commissioners confirmed that the cities appear to be satisfied with the current approach.

Alternatives Contemplated, but not Recommended

Attachment 4 includes a map submitted by a member of the public that recommended a major re-thinking of the make-up of the five supervisorial districts. The Commission did not recommend this plan for adoption by the Board. In doing so, the Commissioners recommended exercising caution, recognizing that one person’s point of view may have a negative effect on those impacted. It was further suggested that a change to move so many people is not practicable given the short time frame. Such a substantial change will require careful deliberation and ample opportunity for those affected to respond to the proposed changes.

The ARC 21 considered several other changes proposed by Commissioners, which did not receive consensus to include them in the map and plan recommended for adoption by the Board of Supervisors. These proposals are described in Attachment 5.

Additional Direction to Staff Regarding Other Potential Boundary Adjustments

As previously shared, under Elections Code Section 21507.1, the Board must hold four (4) public hearings to consider a plan or plans submitted by the Advisory Redistricting Commission and the public, and to receive public comment and testimony on those proposed maps. As explained above, the Advisory Redistricting Commission and/or County staff were permitted to hold one public hearing

prior to any proposed maps being drafted and published. Therefore, the public workshop on September 30th served as the first pre-map public hearing. The remaining public hearing schedule for the Board to consider the draft plans and maps, as approved on August 24, 2021, and confirmed on September 14th, is as follows:

Public Hearing Schedule - Approved by the Board August 24, 2021	
<u>Public Hearing #2</u> Receive ARC 21 recommendations and hear public testimony, opportunity for Board members to suggest changes and/or additional plans(s) or map(s).	Oct 26th - Special Evening BOS Meeting 6:30 p.m.
<u>Public Hearing #3</u> Hear public testimony and request additional work (if needed) from staff	Nov 9th - Regular BOS Meeting 10:45 a.m.
<u>Public Hearing #4</u> Final action - Board to vote and adopt final map	Nov 16th - Regular BOS meeting 10:45 a.m.
Additional Public Hearing (if needed) to re-publish proposed maps.	Dec 7th - Regular BOS meeting 10:45 a.m.

Written and oral public comments will be accepted on proposed district boundaries until a final map is approved by the Board. However, in order to meet the 7-day publishing requirement for proposed maps to be considered by the Board, staff recommends that the Board establish Tuesday, November 2, 2021, as the final day for which a map from the public may be submitted in order to be considered at the third public hearing on November 9th and meet the 7-day requirement.

At this point, staff now requests the Board’s review and consideration of the Plan and 2021 Proposed Supervisorial Districts Map presented by the Advisory Redistricting Commission, a draft map submitted from a member of the public, the COI testimony received on the Redistricting website to date, and at today’s hearing, and requests that the Board provide staff with the necessary direction to prepare the plan(s) and map(s) that will move forward for adoption by the Board. Changes directed may be consistent with the four principles affirmed by the Board for the 2021 effort, which included the opportunity for Supervisors to suggest changes to their district boundaries, to the extent such changes are necessary prior to the public hearing.

Body

Strategic Plan Element(s)

The 2021 redistricting process, including efforts to encourage public participation supports all of the County’s Strategic Plan goals.

Meeting History

Oct 26, 2021 6:30 PM Video Board of Supervisors SPECIAL MEETING

Meeting paused due to technical issues; Meeting restarted at 6:50 pm

Recommended Action(s):

- 1) Accepted and filed report on the Redistricting of Supervisorial District boundaries;
- 2) Considered the proposed 2021 Supervisorial District Boundaries Map, as recommended by the County’s Advisory Redistricting Commission;
- 3) Considered Community of Interest Forms (narratives) and a proposed map of Community of Interest testimony, as submitted by members of the public, which are attached and are included in the public record of testimony;
- 4) Opened the Public Hearing and receive testimony from the public;

- 5) Provided direction to staff on a final plan that would move forward for adoption;
- 6) Closed the period for which redistricting maps and plans can be submitted by the public as of November 2, 2021, to permit these to be considered at the Third Public Hearing; and
- 7) Continued the Public Hearing to November 9, 2021, for a third hearing, and hold a fourth and final Public Hearing on November 16, 2021, as required under Elections Code Section 21507.1.

One person addressed the Board in Chambers

RESULT: **APPROVED AS RECOMMENDED [UNANIMOUS]**
MOVER: Zach Friend, Second District Supervisor
SECONDER: Ryan Coonerty, Third District Supervisor
AYES: Manu Koenig, Zach Friend, Ryan Coonerty, Greg Caput, Bruce McPherson

Discussion

 [Add Comment](#)

Powered by [Granicus](#)



COUNTY OF SANTA CRUZ BOARD OF SUPERVISORS SPECIAL MEETING AGENDA

Hybrid - Board Chambers & Virtual/Teleconference
701 Ocean Street Rm 525, Santa Cruz, CA

ZOOM LINK [HTTPS://US02WEB.ZOOM.US/J/84078327816](https://us02web.zoom.us/j/84078327816)

TELEPHONE +1 669 900 6833 WEBINAR ID: 840 7832 7816

OCTOBER 26, 2021 – 6:30PM

****MASKS ARE REQUIRED FOR IN CHAMBERS PARTICIPATION****

-
- 6:30 - Call to Order
 - Public Comment
 - Regular Agenda
-

NOTE: Updates, revisions and additional materials for this agenda will be published on the County's website, Board of Supervisors Meeting Portal, at:

<https://santacruzcountyca.iqm2.com/Citizens/Default.aspx>

Agenda documents are available for review in person at the office of the Clerk of the Board, Government Center, 5th Floor, 701 Ocean Street, Rm 520; and electronically on the County's website, at: www.santacruzcountyca.us. Board of Supervisors meetings are televised live on Community Television of Santa Cruz County; visit website at: www.communitytv.org/watch/

To **comment** on individual agenda items, visit the Board's Meeting Portal web page at: www.santacruzcountyca.iqm2.com/Citizens/Default.aspx Select the meeting date and click on the icon next to an item description. Comments must be received before 5:00 p.m. the day before the meeting to be included with agenda materials. Comments received after 5:00 p.m. and before 8:30 a.m. on meeting day will be included in the minutes record. For additional information, call the Clerk of the Board's office at 454-2323 (TTY/TDD call 711).

CONSENT AGENDA

Consent items include routine business that does not call for discussion. One roll call vote is taken for all items. Only a Board Member may pull items from Consent to Regular agenda. Members of the public must request that a Board Member pull an item from the Consent Agenda prior to the start of the meeting. Staff is available to address public concerns Monday through Friday, 8:00 a.m. to 5:00 p.m.

TRANSLATION SERVICES/SERVICIOS DE TRADUCCION

Spanish language translation is available on an as needed basis. Please make advance arrangements at Clerk of the Board, Room 520, 701 Ocean St., Santa Cruz; or by telephone at (831) 454-2323.

Las sesiones de la Mesa Directiva de los Supervisores del Condado pueden ser traducidas del inglés al español y del español al inglés. Por favor haga arreglos anticipadamente con la Secretaria de la Mesa Directiva de los Supervisores en el cuarto número 520, 701 Ocean St., Santa Cruz; o por teléfono al número (831) 454-2323.

ACCOMMODATIONS FOR PERSONS WITH DISABILITIES

The County of Santa Cruz does not discriminate on the basis of disability, and no person shall, by reason of a disability, be denied the benefits of its services, programs, or activities. If you are a person with a disability and wish to participate in the meeting and require special assistance in order to participate, please contact the Clerk of the Board at (831) 454-2323 [TDD: call 711] at least 72 hours in advance of the meeting to make arrangements.

Persons with disabilities may request a copy of the agenda in an alternative format.

County of Santa Cruz – Board of Supervisors
Public Participation Guidelines

September 2021 (COB)

Beginning August 10, 2021, the Board of Supervisors chambers will be open to the public during meetings of the Board of Supervisors, with limited capacity. Masks are required for anyone present in the Board Chambers, for the entirety of the meeting. Members of the public may also participate in the meetings via the Zoom platform and by telephone. Online streaming and CTV broadcast will continue as usual.

Board of Supervisors (BOS) meetings are broadcast via **live audio/video stream**:

- Meeting Portal website: www.santacruzcountyca.iqm2.com
- County's Facebook page: <https://www.facebook.com/countyofsantacruz/>
- Community Television (CTV) of Santa Cruz County: www.communitytv.org/watch

PUBLIC COMMENT

Spoken comments will be accepted during the teleconference meetings. To address the Board, click on the link provided to access a Zoom-based meeting, or call the telephone number provided on the agenda. If you only wish to watch the meeting and not address the Board, the Clerk requests that you stream the meeting rather than joining by Zoom.

Participating in Person:

The Board Chambers has been reopened for Board meetings with limited capacity. Face coverings are required in all indoor public spaces within County facilities, including the Board Chambers, regardless of vaccination status. Masks should be made with two or more layers of fabric and fit snugly over the nose and mouth. To address the Board, please line up at the podium when the Board Chair calls for general public comment or calls for public comment on the regular agenda item to which you would like to speak. Please state your name clearly for the record before making your comment and limit your remarks to the allotted time.

the meeting rather than joining by Zoom.

Participating by Phone:

To address the Board, dial the telephone number provided and you will be prompted to enter the meeting ID number. After that, you will be able to listen to the meeting and speak during public comment as announced by the Chair. The Clerk will call on people by the last four digits of their phone number.

The following commands can be entered via DTMF tones using your phone's dial pad while in a Zoom meeting:

- *6 - Toggle mute/unmute
- *9 - Raise hand

Participating online via Zoom:

You may download the Zoom client or connect to the meeting in-browser. If using your browser, make sure you are using a current, up-to-date browser: Chrome 30+, Firefox 27+, Microsoft Edge 12+, Safari 7+. Certain functionality may be disabled in older browsers including Internet Explorer.

You will be asked to enter an email address and name. **Please identify yourself by name** as this appears online and is how we notify you when it is your turn to speak.


When the Board Chair calls for the item on which you wish to speak, click on "raise hand." The Clerk will activate and unmute speakers in turn. Speakers will be notified shortly before they are called to speak.

When called, please limit your remarks to the time limit allotted.

If you only wish to watch the meeting and not address the Board, the Clerk requests that you stream the meeting rather than joining by Zoom.

RELATED CORRESPONDENCE

Web Agenda Comments

To comment on specific agenda items prior to the meeting, please use the "Add Comment" tool on the Meeting Portal webpage. Click on the **meeting date**, scroll down to the agenda item, and click the bubble icon located at the end of the item description. Please adhere to the [Acceptable Use Rules](#)  for web commenting.

Written comments on agenda items may also be submitted to the Board by email or US Mail

Email: BoardOfSupervisors@santacruzcounty.us

- * Emailed documents may take up to 24 hours to be posted
- * Please include the agenda item number

U.S. Mail:

Santa Cruz County Board of Supervisors
701 Ocean Street, Room 500
Santa Cruz, CA 95060

Comments received after 5 p.m. Monday and before the end of the meeting will be included with the minutes record. General comments not related to topics on the agenda will be included with the next Written Correspondence Listing.

For the latest COVID-19 updates,
please visit the County Health
Services Agency website at:
<http://santacruzhealth.org>

Published in the PDF agenda, and available online at:
<https://www.santacruzcounty.us/Departments/ClerkoftheBoard.aspx>

1. CALL TO ORDER / ROLL CALL
2. CONSIDERATION OF LATE ADDITIONS TO THE AGENDA
3. MOMENT OF SILENCE AND PLEDGE OF ALLEGIANCE
4. PUBLIC COMMENT

Any person may address the Board during its Public Comment period. Speakers must not exceed two (2) minutes in length or the time limit established by the Chair, and individuals may speak only once during Public Comment. All Public Comments must be directed to the item listed on today's Regular Agenda, Public Comments will normally be received by the Board for a period not to exceed thirty (30) minutes. If, at the end of this period, additional persons wish to address the Board, the Public Comment period may be continued to the last item on the Agenda.

Regular Agenda - Special Meeting

5. Public hearing to consider maps and plans proposed by the Advisory Redistricting Commission and members of the public, accept and file report on the 2021 Redistricting Process, and provide additional direction, as recommended by the County Administrative Officer

Regarding public hearing items: If any person challenges an action taken on the foregoing matter(s) in court, they may be limited to raising only those issues raised at the public hearing described in this notice or in written correspondence delivered to the Board of Supervisors at or prior to the public hearing.

The time limit for seeking judicial review of any decision approving or denying an application for a permit, license or other entitlement, or revoking a permit, license or other entitlement is governed by Code of Civil Procedure Section 1094.6 and is no later than the 90th day following the date on which the decision is made (unless a shorter time limit is specified for the type of action by State or Federal law, in which case the shorter time limit shall apply).

**County of Santa Cruz Board of Supervisors****Agenda Item Submittal****From:** County Administrative Office

(831) 454-2100

Subject: Public Hearing to consider proposed changes to supervisorial districts**Meeting Date:** October 26, 2021**Recommended Action(s):**

- 1) Accept and file this report on the Redistricting of Supervisorial District boundaries;
- 2) Consider the proposed 2021 Supervisorial District Boundaries Map, as recommended by the County's Advisory Redistricting Commission;
- 3) Consider Community of Interest Forms (narratives) and a proposed map of Community of Interest testimony, as submitted by members of the public, which are attached and are included in the public record of testimony;
- 4) Open the Public Hearing and receive testimony from the public;
- 5) Provide direction to staff on a final plan that would move forward for adoption;
- 6) Close the period for which redistricting maps and plans can be submitted by the public as of November 2, 2021, to permit these to be considered at the Third Public Hearing; and
- 7) Continue the Public Hearing to November 9, 2021, for a third hearing, and hold a fourth and final Public Hearing on November 16, 2021, as required under Elections Code Section 21507.1.

Executive Summary

On September 14, 2021, the Board scheduled a Public Hearing for today at 6:30 p.m. to consider a redistricting plan or plans recommended by members of the public and the County's Advisory Redistricting Commission (ARC 21), appointed by the Board pursuant to California Elections Code 23001. The following report provides an overview of the statutes that govern redistricting, a summary of the County's redistricting process to date including public outreach conducted by the County's Advisory Redistricting Commission, and presents the maps, with tables and descriptions, of the plan or plans that have been submitted by the ARC 21 and the public for consideration by the Board at today's Public Hearing. Per E Code 21507.1 the Board will continue the public hearing process to allow for additional public input on November 9th with the intention to consider adoption at the final public hearing on November 16, 2021.

Background

Legal Requirements in Brief - New Legislation guides the Redistricting Process

Every ten years, local governments are required to use updated federal census data to redraw their district lines to reflect how local populations have changed. In adopting updated supervisorial districts, the Board must comply with the requirements of the United States and California Constitutions, the federal Voting Rights Act of 1965 (52 U.S.C. Sec. 10301 et seq.), and California Elections Code Sections 21500 et seq. These authorities require that districts be based on total population and must have substantially equal population for each district. Additionally, the U.S. Supreme Court, in recent cases, has generally prohibited using race as a predominate criteria for redrawing districts or diluting the voting rights of racial minorities.

New state laws, AB 1276 (Bonta 2020), AB 849 (Bonta 2019), SB 1018 (Allen 2018), and AB 2172 (Weber 2018) established new redistricting requirements that applied to counties. The legislature's intent with each new law was to maximize public participation and increase transparency in the redistricting process.

In 2019, California adopted the "Fair and Inclusive Redistricting for Municipalities and Public Subdivisions (FAIR MAPS) Act. First, the FAIR MAPS act amended Elections Code Section 21500(c) to establish that updated supervisorial districts must be redrawn using the following criteria, in order of priority, each to the extent practicable: 1) supervisorial districts must be geographically contiguous; 2) the geographic integrity of neighborhoods and communities of interest must be respected in a manner to minimize divisions; 3) the division of cities or census designated places shall be respected to minimize divisions; 4) district boundaries must be easily identifiable and, if possible, bounded by natural and artificial barriers, streets, and/or county lines; and 5) district boundaries should encourage geographic compactness.

In all cases, districts cannot be drawn to favor or discriminate against any political party. Additionally, consideration of Community of Interests cannot include relationships with political parties, current incumbents, or political candidates.

Additionally, as outlined in Elections Code sections 21707.1 and 21508, the FAIR MAPS Act also requires the counties to establish a good faith and extensive outreach to gain public input throughout the redistricting process, especially for underrepresented and language minority communities. The County is required to hold at least four public hearings or workshops meeting the following requirements: one to be held prior to maps being drawn, two held after draft maps are drawn, and one of which is held on a weekend or after 6:00 p.m. on a weekday. All hearings must be noticed at least five days in advance, accessible to persons with disabilities, and if requested, provided with live translation in a language other than English. Finally, it established a required notice period of seven (7) days for any draft maps prior to adoption by a Board of Supervisors.

SB 1018 (Allen 2018) established the various types and specific criteria on who may serve on advisory, hybrid, or independent redistricting commissions.

AB 2172 (Weber 2018) provided that beginning in 2020, the State Department of Corrections and Rehabilitation must provide the last known place of residence of each inmate incarcerated in an adult correctional facility on April 1, 2020, so that this

population can be reallocated from the Census Block of the prison’s address to the Census Blocks of their home address.

This body of federal and state law both inform and shape the redistricting process for county supervisorial districts.

Analysis

The Redistricting Advisory Commission (ARC 21) and the County’s Internal Leadership Group

On February 28, 2021, the Board established an Advisory Redistricting Commission (ARC 21) composed of a resident from each of the five supervisorial districts to make recommendations to the Board of Supervisors on any proposed changes to district boundaries. The County had utilized a similar redistricting advisory group for the past three efforts in 1991, 2001, and 2011. For the 2021 effort, the ARC 21 was convened under Elections Code section 23001 and followed all requirements under the Ralph M. Brown Act. Five members were appointed on April 13, with an alternative nominee for the Fifth District appointed on June 29, 2021. The members are as follows:

First District	Cheri O’Neil
Second District	Michael Watkins (Chair)
Third District	Kris Reyes
Fourth District	Peter Radin
Fifth District	James Mosher

To support the work of the ARC 21, the County Administrative Office formed an Internal Leadership Group comprised of staff from their office, County Counsel, Information Services, and County Clerk/Elections.

2021 Complications - Delayed Release of Population Data for Redistricting

In addition to integrating the new legislation as described above, all entities in California engaged in the redistricting process were impacted by the delay in the delivery of population data for redistricting (P.L. 94-171 data) from the 2020 Census. This included those entities working on redistricting for congressional districts, state assembly and senate districts, community college and special districts, cities, and counties. Counting persons during a global pandemic proved extremely problematic, which substantially delayed the release of redistricting data well past the customary release date of April 1st of the year after each Census Day.

Utilizing several workarounds, the Census Bureau was able to issue the P.L. 94-171 data to the States, in a legacy format, on August 12, 2021. On August 19th, California’s Statewide Database (SWDB) released reformatted data, now usable by counties.

As required by AB 2172, the SWDB completed the apportionment of the prison population by September 22nd, with a subsequent correction of that data on September 27th. Redistricting data was loaded into the County’s current Geographic Information System (GIS) immediately upon its release, and Esri, the County’s software vendor, downloaded the final data into the redistricting software and made it available for use on

October 1st. Training on how to use the software was provided to the members of the Advisory Redistricting Commission through October 8th. GIS staff made the web-based mapping application available on the Redistricting website, along with instructions and links to YouTube videos to facilitate its use by the public.

While a substantial outreach program was undertaken as of mid-May 2021 when the County's Redistricting website went live and though the first of four public workshops beginning on September 1st, updates to county supervisorial district maps and plans could not be developed until the data was loaded into the redistricting mapping software on October 1, 2021.

Staff has previously reported that the deadline for counties to complete the redistricting process and adopt a map of new Supervisorial Districts is December 15, 2021. If not completed by this date, the county loses jurisdiction, and the process is completed by the Superior Court.

In comparison, for the 2011 effort, census data was available to the county during the first week of April with a final deadline of November 1, 2011. This afforded the County's advisory redistricting committee at the time a full 6 months during which plans could be considered and the public engaged prior to recommending maps or plans for the Board's consideration.

ARC 21's Public Engagement Plan - Implementing the Fair MAPS Act

On May 19, 2021, the ARC 21 convened the first of eleven public regular, Special, workshops and/or meetings to develop and implement the provisions of AB 849, the FAIR MAPS Act, which requires extensive outreach to gain public input throughout the process. The full calendar of meetings and workshops is included as Attachment 1.

Beginning with the launch of the County's Redistricting webpage on the County's website (www.santacruzcounty.us/Redistricting2021) on May 13th, the ARC 21's efforts to engage the public in the redistricting effort were substantial. A full menu of strategies, which were generally available in English and Spanish, were deployed including press releases, campaigns on social media, and email-based outreach, contacting nearly 100 County partners including schools, business, labor, and social organizations, and non-profit service providers. All outreach was designed to highlight web-based input via the website and drive attendance to the four Special Meeting and Public Workshops convened by the ARC 21. Staff worked with a local graphics firm to develop an Infographic with the tagline, "Get Involved" (Attachment 1A), which was widely distributed in both social media and email blasts.

The first of the four Public Workshops was kicked off on September 1st at the County Building, followed by workshops for mid-county residents at the Sheriff's Office Community Room in Live Oak on September 22nd, north-county residents at the Felton Branch Library on September 29th, and south-county residents at Starlight Elementary School on September 30th. Live Spanish language translation was provided at the meeting at Starlight Elementary School. All were conducted as evening weekday meetings beginning at 6:30 p.m. and participation was available both in-person and online via Zoom.

As provided under Elections Code (EC) section 21507.1 (a)(2)(e), county staff was permitted to conduct one of the pre-map Public Workshops in lieu of holding one of the four public hearings required by EC 21507.1(a). The Public Workshop/Special Meeting conducted by the ARC 21 and staff on September 30th at 6:30 p.m. was noticed as Public Hearing #1. Therefore, today's public hearing, while the first conducted by the Board of Supervisors, is the second in the series of four required.

Communities of Interest - A new way for residents to describe their community

The focus of the public workshops and the redistricting website was to encourage residents to describe their Community of Interest (COI). Per AB 849, this requires that, to the extent practical, districts must maintain the geographic integrity of neighborhoods and communities of interest. Elections Code section 21500(c)(2) defines a community of interest as a contiguous population which shares common social and economic interests that should be included within a single district for purposes of its effective and fair representation.

Examples of shared interest are those common to an urban, rural, or agricultural area, and they can be cultural communities with similar language and community celebrations. COIs are essentially self-defined and create a common story. COIs are not, for the purposes of redistricting, relationships with political parties, incumbents, or political candidates.

Beginning with the mid-May 2021 launch, the County's redistricting website provided an opportunity to record, and if desired, map communities of interest. A copy of narrative descriptions and maps demonstrating those descriptions, received as of September 20, 2021, are included as Attachment 2. The four Public Workshops/Special Meetings convened by the ARC 21 also provided opportunities for conversation about COIs, and recordings of those statements are available on the Redistricting website.

In summary, there were several conversations by residents of the San Lorenzo Valley and environs that there are shared interests with residents in other rural, mountain/valley communities such as Bonny Doon. Several residents spoke to unifying the City of Scotts Valley in a single district. The Advisory Redistricting Commissioners regularly reviewed COI narratives and maps received, and there was a quorum of Commissioners that attended and witnessed the testimony delivered at each of the four public workshops. In addition, on their own, Commissioners discussed the redistricting project with residents in their districts and gathered in-person narratives about COIs.

Based on attendance at the Public Workshops, and the number of COI narratives received on the website, there is no question that the redistricting subject itself is competing with many other current issues and concerns of residents. Further, the updated census data presented modest population growth in the county generally, with no significant population imbalances across the current supervisorial districts.

The 2020 Population - Getting to Substantially Equal

Election Code Section 21500 states that "following each federal decennial census, and

using that census as a basis, the board shall adjust the boundaries of any or all of the supervisorial districts of the county so that the supervisorial districts shall be substantially equal in population....” According to the 2020 Census data, the County has a population of 271,352, which when divided equally by the five Supervisorial Districts yields a target population of approximately 54,270 persons. The population of each of the five districts, with an indication of the deviation from the 1/5th calculation is provided in Table 1.

Table 1: Population by districts from 2020 Census data

District	Total Population	Target Population	Over - Under	Percent Over - Under	Hispanic or Latino	Not Hispanic or Latino
District 1	54,147	54,270	-123	-0.23	11,916	42,231
District 2	54,740	54,270	469	0.87	19,036	35,704
District 3	56,380	54,270	2,109	3.89	13,390	42,990
District 4	53,878	54,270	-392	-.072	43,185	10,693
District 5	52,207	54,270	-2,063	-3.80	7,049	45,158

Recommended District Boundaries by the Advisory Redistricting Commission for 2021

After attending the multiple public workshops and taking into consideration the COI information submitted both online and during the workshops, the ARC 21 has advanced a Redistricting Plan for the Board’s consideration. Their direction also included a recommendation that GIS staff be authorized to make administrative changes necessary to ensure that the district lines follow parcel lines, rather than Census Block boundaries, where such deviation exists. This will preserve the integrity of the County’s Geographic Information System (GIS) to continue to be a parcel-based system and assist the County Clerk to conduct elections.

The ARC 21 met on October 6, 13, and 15, 2021, to consider and propose a 2021 Draft Map of Supervisorial Districts. During deliberations over these three meetings, consensus was reached on two changes to the existing Supervisorial District boundaries.

District Boundary Proposal A

The first is a change to the western boundary of District 1 to include portions of the East Harbor neighborhoods currently in District. The ARC 21 recommends that this portion be transferred from the Third to the First District. New district boundaries from north to south are Brommer Street Extension to Twin Lakes State Beach, and west to east from the City of Santa Cruz limits to Ninth Avenue. This proposal transfers 613 persons from District 3 to District 1. Table 2 demonstrates the new configuration to each District.

Table 2: Population for District 1 and 3 based on Proposal A

District	Population	Hispanic	% Hispanic	Non-Hispanic	% Non-Hispanic	Pop Over 18	% Over	Hispanic Over 18	% H Over

							18		18
First	54,760	12,003	21.9	42,757	78.1	45,208	82.6	8,723	15.9
Third	55,767	13,303	23.8	42,464	76.1	48,893	87.7	11,058	19.8

District Boundary Proposal B

The second change currently proposed by the ARC 21 recognizes a boundary split that existed in a neighborhood in the Apple Hill district in unincorporated Watsonville, which separates residents of Silver Leaf and Green Meadow Drives into two Districts. This proposal cures the split and transfers a population of 491 from the 2nd to the 4th District, as shown in Table 3.

Table 3: Population for District 2 and 4 based on Proposal B

District	Population	Hispanic	% Hispanic	Non-Hispanic	% Non-Hispanic	Pop Over 18	% Over 18	Hispanic Over 18	% H Over 18
Fourth	54,369	43,547	80.1	10,822	19.9	39,303	72.3	30,009	55.2
Second	54,249	18,674	34.4	35,575	65.6	43,791	80.7	13,126	24.2

Effect of District Boundary Proposals

Proposals A and B reflect community of interest considerations and adhere to redistricting criteria including the federal criteria of substantially equal by bringing districts closer to the population target as can be seen in Table 4. Table 4 combines the recommended boundary adjustments from Proposal A and B and includes the percent over-under amounts from the Census 2020 data. As shown in Table 4, the percentage over/under target is improved through these proposals for Districts 1, 2, 3, and 4.

A county-wide map incorporating the new boundaries is Attachment 3, a detailed map of the change proposed at the East Harbor (Proposal A) is Attachment 3A, and the change proposed in the Apple Hill area (Proposal B) is Attachment 3B. Additionally, a detailed table with all the data sets required for the 2021 redistricting effort is Attachment 3C.

Table 4: Population by districts incorporating Proposal A and B with percent over-under comparison

District	Total Population	Target Population	Over - Under	% Over - Under Census	% Over - Under Proposed	Hispanic or Latino	Not Hispanic or Latino
District 1	54,760	54,270	490	-0.23	0.9	12,003	42,757
District 2	54,249	54,270	-21	0.87	-0.04	18,674	35,575
District 3	55,767	54,270	1,497	3.89	2.76	13,303	42,464

District 4	54,369	54,270	99	-0.72	0.18	43,547	10,822
District 5	52,207	54,270	-2,063	-3.80	-3.8	7,049	45,158

Consistency with the Legal Landscape

The Advisory Redistricting Commission confirms that the recommended map and plan are consistent with the U.S. Constitution requiring substantial equality, and the federal Voting Rights Act of 1965, which prohibits minority vote dilution that weakens the voting strength of minorities or prevents minorities from a fair chance to elect candidates of their choice. Further, the Commission believes that the proposed boundaries largely meeting the requirements of AB 849 in that they provide contiguity of district boundaries, encourage geographic compactness, provide boundaries that are relatively easy to identify, and respect and, in some cases, improve representation of communities of interest.

Lastly, while acknowledging that the local policy principles affirmed by the Board for 2021 are subservient to state and federal guidelines, ARC 21 members suggest that the recommended plan is consistent with the Board’s principal to move the existing Supervisorial District boundaries as little as possible to accomplish the goals of near equality. Of note, the recommended plan continues the trend from prior efforts that the County’s four incorporated cities are represented by at least two Supervisors. Absent any information to the contrary, Commissioners confirmed that the cities appear to be satisfied with the current approach.

Alternatives Contemplated, but not Recommended

Attachment 4 includes a map submitted by a member of the public that recommended a major re-thinking of the make-up of the five supervisorial districts. The Commission did not recommend this plan for adoption by the Board. In doing so, the Commissioners recommended exercising caution, recognizing that one person’s point of view may have a negative effect on those impacted. It was further suggested that a change to move so many people is not practicable given the short time frame. Such a substantial change will require careful deliberation and ample opportunity for those affected to respond to the proposed changes.

The ARC 21 considered several other changes proposed by Commissioners, which did not receive consensus to include them in the map and plan recommended for adoption by the Board of Supervisors. These proposals are described in Attachment 5.

Additional Direction to Staff Regarding Other Potential Boundary Adjustments

As previously shared, under Elections Code Section 21507.1, the Board must hold four (4) public hearings to consider a plan or plans submitted by the Advisory Redistricting Commission and the public, and to receive public comment and testimony on those proposed maps. As explained above, the Advisory Redistricting Commission and/or County staff were permitted to hold one public hearing prior to any proposed maps being drafted and published. Therefore, the public workshop on September 30th served as the first pre-map public hearing. The remaining public hearing schedule for the Board to consider the draft plans and maps, as approved on August 24, 2021, and confirmed on September 14th, is as follows:

Public Hearing Schedule - Approved by the Board August 24, 2021	
<u>Public Hearing #2</u> Receive ARC 21 recommendations and hear public testimony, opportunity for Board members to suggest changes and/or additional plans(s) or map(s).	Oct 26th - Special Evening BOS Meeting 6:30 p.m.
<u>Public Hearing #3</u> Hear public testimony and request additional work (if needed) from staff	Nov 9th - Regular BOS Meeting 10:45 a.m.
<u>Public Hearing #4</u> Final action - Board to vote and adopt final map	Nov 16th - Regular BOS meeting 10:45 a.m.
Additional Public Hearing (if needed) to re-publish proposed maps.	Dec 7th - Regular BOS meeting 10:45 a.m.

Written and oral public comments will be accepted on proposed district boundaries until a final map is approved by the Board. However, in order to meet the 7-day publishing requirement for proposed maps to be considered by the Board, staff recommends that the Board establish Tuesday, November 2, 2021, as the final day for which a map from the public may be submitted in order to be considered at the third public hearing on November 9th and meet the 7-day requirement.

At this point, staff now requests the Board's review and consideration of the Plan and 2021 Proposed Supervisorial Districts Map presented by the Advisory Redistricting Commission, a draft map submitted from a member of the public, the COI testimony received on the Redistricting website to date, and at today's hearing, and requests that the Board provide staff with the necessary direction to prepare the plan(s) and map(s) that will move forward for adoption by the Board. Changes directed may be consistent with the four principles affirmed by the Board for the 2021 effort, which included the opportunity for Supervisors to suggest changes to their district boundaries, to the extent such changes are necessary prior to the public hearing.

Financial Impact

No financial impact

Strategic Plan Element(s)

The 2021 redistricting process, including efforts to encourage public participation supports all of the County's Strategic Plan goals.

Submitted by:

Carlos J. Palacios, County Administrative Officer

Recommended by:

Carlos J. Palacios, County Administrative Officer

Attachments:

- a Redistricting calendar - Attachment 1
- b Redistricting Infographics - Attachment 1A
- c COI forms and additional correspondence - Attachment 2
- d County map with recommended boundary adjustments - Attachment 3
- e Map with recommended boundary adjustments at East Harbor - Attachment 3A
- f Map with recommended boundary adjustments at Apple Hill - Attachment 3B
- g Data tables for recommended boundary adjustments - Attachment 3C
- h Map submitted from the public - Attachment 4
- i Plans discussed by ARC 21 members but not recommended - Attachment 5

cc:

District 1 Redistricting Commissioner
County Counsel
County Clerk -Elections
GIS Manager
Fifth District Redistricting Commissioner
First District Redistricting Commissioner
Fourth District Redistricting Commissioner
Third District Redistricting Commissioner
Information Services Department

Redistricting Calendar for 2021 (Rev. 10/19/21)

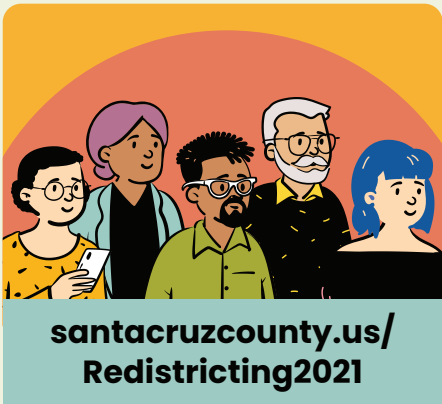
Date	Action
February 23, 2021	Board of Supervisors adopts Resolution No.27-2021 establishing Redistricting Commission
April 13, 2021	Advisory Redistricting Commission members appointed
May 13, 2021	Santa Cruz County Redistricting website launched. Community of Interest form and mapping tool made available for public use mid-May.
May 19 to October 15	Advisory Redistricting Commission (ARC 21) meetings conducted, and website updated.
August 24 to present	Extensive public outreach including press releases, campaigns on social media, distribution of infographics, and email-based outreach.
August 12	Census Bureau delivers redistricting data in a Legacy Format. The Statewide Database (SWDB) must reformat for use by counties and apportion population in State prisons
August 20	Preliminary (not yet apportioned) data posted on Redistricting website
Sept 1, 22, 29 September 30 – PH#1	Public workshops to provide information on redistricting process, engage the public in the process, and take public input on Communities of Interest were conducted in four different locations throughout the County. These workshops were held in the evening and were made accessible in-person and online.
September 22	State (SWDB) releases PL 94-171 data files to counties with a subsequent correction of the data on September 27 th
October 1	ESRI downloads final data into the redistricting software and County makes mapping software available for public use. ARC 21 members trained on use of the software and provided tech support in creating maps.
October 26 – PH#2 November 9 – PH#3 November 16 – PH#4	<p>Public Hearing Dates – Under Elections Code section 21507.1, the Board must hold 4 public hearings prior to the adoption of final Supervisorial District map.</p> <p>At least one public hearing to be held on a weekday evening after 6pm, Saturday, or Sunday. EC 21507.1(b).</p> <p>Public Workshops - Under EC 21507.1(e), one public hearing, prior to the map being drawn, may be substituted by 1 or more proposed “public workshops” conducted by staff and/or the Advisory Redistricting Commission.</p>
December 15, 2021	Deadline for County Board of Supervisors to adopt final map.

Attachment: Redistricting calendar - Attachment 1 (11545 : Public Hearing to consider proposed changes to supervisorial districts)

Get Involved

with

Redistricting Santa Cruz County!



What is redistricting?

After every decennial census, election districts are redrawn so that each is substantially equal in population and representative of the community. Redistricting is happening throughout our country – in state and federal legislative districts, local supervisorial districts and more.

Why should I care about redistricting?

It determines which neighborhoods and communities are grouped together for the purposes of elections and allows you to share how you think district boundaries should be drawn to best represent your community.



How will new district boundaries get approved?

Based on input from the public and Redistricting Commission, the Board of Supervisors will adopt the final map.



How can I get involved?

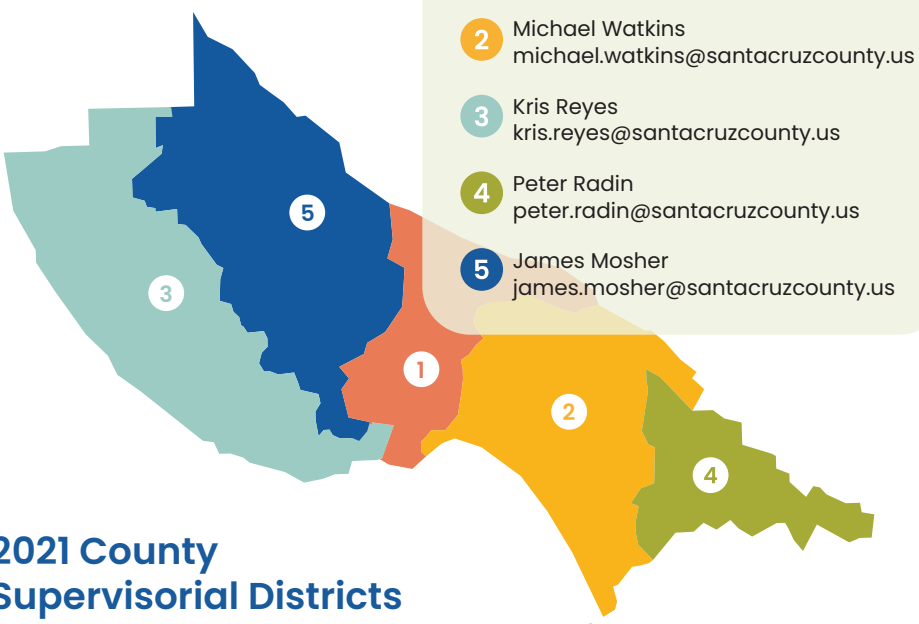
Share how you think district boundaries should be drawn to best represent your community:

1) Attend a workshop in person or online (see website):

- | | |
|---|---|
| <ul style="list-style-type: none"> • All County
SCC Board Chambers
September 1, 2021 at 6:30pm • Mid County
Sheriff's Community Room
September 22, 2021 at 6:30pm | <ul style="list-style-type: none"> • North County
Felton Branch Library
September 29, 2021 at 6:30pm • South County
Starlight Elementary
September 30, 2021 at 6:30pm |
|---|---|

2) Fill out a Communities of Interest Form (see website) or email the Commission at: Redistricting2021@santacruzcounty.us

3) Email the Commissioner representing your District:



- 1 Cheri O'Neil
cheri.oneil@santacruzcounty.us
- 2 Michael Watkins
michael.watkins@santacruzcounty.us
- 3 Kris Reyes
kris.reyes@santacruzcounty.us
- 4 Peter Radin
peter.radin@santacruzcounty.us
- 5 James Mosher
james.mosher@santacruzcounty.us

2021 County Supervisorial Districts

Find your district: santacruzcounty.us/Redistricting2021



¡Participe

en la

Redistribución de Distritos

del Condado de Santa Cruz!



santacruzcounty.us/Redistricting2021



¿Qué es la redistribución de distritos?

Después de cada censo decenal, los distritos electorales se vuelven a redistribuir para que cada uno sea sustancialmente igual en población y representación de la comunidad. La redistribución de distritos está ocurriendo en todo el país, en distritos legislativos estatales y federales, distritos de supervisión locales y más.

Redistricting2021@santacruzcounty.us

Por qué deberíamos participar en la redistribución de distritos?

Este proceso determina que vecindarios y comunidades se unen juntos para los propósitos de las elecciones y le permite opinar como se deben redistribuir los límites del distrito que representan su comunidad.



¿Cómo se aprobarán los nuevos límites del distrito?

El público y la comisión de redistribución de distritos darán comentarios y recomendaciones a la junta de supervisores quien adoptará el mapa final.

¿Cómo puedo participar?

Comparta su opinión de cómo se deben redistribuir los distritos que representan su comunidad:

1) Asista a un taller en persona o virtualmente (consulte el sitio web):

- | | |
|---|---|
| <ul style="list-style-type: none"> • Todo el Condado
Edificio principal del Condado
701 Ocean St, Santa Cruz
1 de septiembre a las 6:30 PM • Región Mediada del Condado
Sheriff's Sala Comunitaria
5200 Soquel Ave, Santa Cruz
22 de septiembre a las 6:30 PM | <ul style="list-style-type: none"> • Región Norte del Condado
Biblioteca Felton
6121 Gushee St, Felton
29 de septiembre a las 6:30 PM • Región Sur del Condado
Starlight Elementary
255 Hammer Dr, Watsonville
30 de septiembre a las 6:30 PM |
|---|---|

Servicios de traducción al español serán proveídos

2) Complete un formulario de Comunidades de Interés (consulte el sitio web) o envíe un correo electrónico a la Comisión a:

Redistricting2021@santacruzcounty.us

3) Envíe un correo electrónico al Comisionado que representa a su distrito:

- 1 Cheri O'Neil
cheri.oneil@santacruzcounty.us
- 2 Michael Watkins
michael.watkins@santacruzcounty.us
- 3 Kris Reyes
kris.reyes@santacruzcounty.us
- 4 Peter Radin
peter.radin@santacruzcounty.us
- 5 James Mosher
james.mosher@santacruzcounty.us



Distritos Supervisoriales del Condado de Santa Cruz

Encuentre su distrito: santacruzcounty.us/Redistricting2021

Fecha límite de adopción del mapa: el 15 de diciembre 2021

@countyofsantacruz @sccounty

What is a Community of Interest, and How can I Participate in Redistricting?

Every ten years, cities and counties must consider the population statistics provided in the decennial census of people living in the United States, to ensure that each District has a substantially equal population. During this process, counties comply with the federal Voting Rights Act and new State laws enacted in 2019 and 2020. These new laws (AB 849 and AB 1276) are designed to encourage public participation and increase transparency in the process. So, to ensure fair representation for you and your community, the County's Advisory Redistricting Commission and Board of Supervisors are asking County residents and interested parties to tell us about your community, and how your community factors into creating boundary lines for each of the five Supervisorial Districts. A map of the current boundaries is found here:

<http://www.santacruzcounty.us/Redistricting2021/CommunitiesofInterest/CommunitiesofInterestReceived.aspx#map>

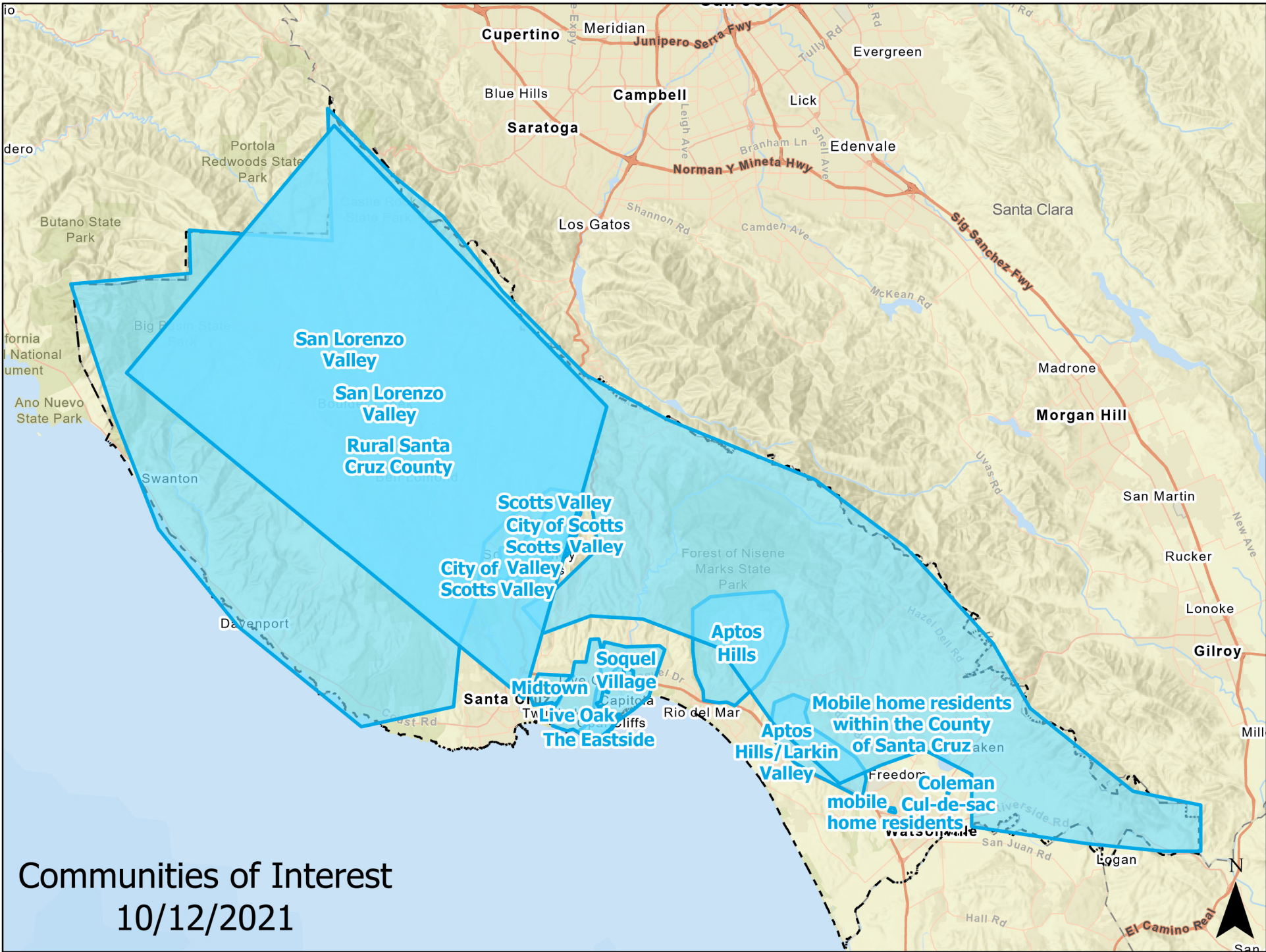
What Are Communities of Interest?

Keeping Communities of Interests together is an important part of redistricting. Communities of Interest (COI) are overlapping sets of neighborhoods, networks, or groups that share interests, views, cultures, histories, languages, and values, and whose boundaries can be identified on a map. A Community of Interest can be defined in many ways. Relationships with political parties or elected officials and candidates are not considered communities of interest. And, while race and ethnicity can play a role in defining a COI, it cannot be used as a sole definition.

COIs are self-defined and create a common story. The following provides some examples of a Community of Interest:

- *Shared interests in schools, housing, community safety, transit, health conditions, land use, and the physical environment, such as the coast, and farming and agricultural spaces;*
- *Common social and civic networks, including places of worship, homeowner associations, community centers, and shared use of community spaces like parks, dog parks, and shopping areas;*
- *Racial and ethnic compositions, cultural identities, and households that predominately speak a language other than English;*
- *Similar socio-economic status, including but not limited to income, home-ownership, and education;
Shared political boundary lines from other jurisdictions, such as school districts, community college districts, and water districts;*
- *Residents who have been working together to advocate for a community issue, such as increasing after-school hours, getting assistance to come back from a natural disaster, or locating a health clinic in their neighborhood.*





Communities of Interest
10/12/2021

Attachment: COI forms and additional correspondence - Attachment 2 (11545 : Public Hearing to consider

Community of Interest Report: 10/12/2021 9:50 AM

Which County Supervisor District do you live in? :

Give Your Community A Name: **Rural Santa Cruz County**

Tell Us About Your Community : Rural parts of the county have needs that are distinct from the built up areas. By anchoring all the supervisorial districts in built up areas, our interests are "cracked" and nobody really becomes a supervisor for our interests. Their "center of mass" is the built up part of their district. Please consider "packing" the rural areas into a supervisorial district with a smaller citified footprint. Perhaps have it include smaller cities separated from the urbanized portions of the county.

Tell Us About Your Place : I should be with all the rural parts of the county, plus smaller-to-larger towns until the population quota is reached.

More About Your Story : Getting the attention of our supervisors is difficult when most of their voters live in Santa Cruz, Capitola, Aptos or Watsonville. P.S. the "Map Your Community of Interest" does not work.

Which County Supervisor District do you live in? :

Give Your Community A Name: [mobile home residents](#)

Tell Us About Your Community : Mobile home residents in the County live in affordable housing, are multi ethnic; often elderly. Mobile homes fall under local rent stabilization (control) ordinances. County of Santa Cruz has an ordinance; City of Watsonville has a different one. County;'s Mob ile NHoem Commissioners help residents in parks in their district.

Tell Us About Your Place : Rancho Cerritos, 2121 Kralj Ave, Watsonville, below Nob Hill, east of Green Valley road, within the City of Watsonville. This park belongs in District 4. All other mobile home parks in the City are in District 4. Residents best served by Mobile Home Commissioner of District 4.

More About Your Story : I am the Chair of the County's Manufactured and Mobile Home Commission. This park in now in District 2. It is not under County rent ordinances. By agreement, the District 2 Commissioner assist this parks' residents to exercise their rights under the City's ordinances.

Which County Supervisor District do you live in? :

Give Your Community A Name: **Scotts Valley**

Tell Us About Your Community : Our community takes pride in our small town atmosphere. Roads, policing, schools and parks are important to us. Community events such as parades, music at the park and farmers markets are a few events that bring us together.

Tell Us About Your Place : We don't need to be grouped with Santa Cruz or Live Oak because their priorities are not the same as ours. Scotts Valley needs to all be in one district. Cutting us in half destroys our unified city. Placing us all in District One with other small towns would be the best option.

More About Your Story : In the past Scotts Valley was all in one district. We were grouped with Felton, Boulder Creek and Ben Lomond. This seems to make the most sense to me. Scotts Valley should all be in one district in order to make our votes count.

Which County Supervisor District do you live in? :

Give Your Community A Name: **San Lorenzo Valley**

Tell Us About Your Community : The residents of the San Lorenzo Valley are a tight, close-knit community that has become even closer following the challenges of the CZU fire, PG&E outages, and health inequities. We are a community that values rural environments and we depend on our network of neighbors and friends. We have a shared interest in solving the complex climate, water, utility and transportation challenges that come with rural living.

Tell Us About Your Place : I am advocating that the District 5 lines either: 1) stay the same, or 2) expand to include the rural region of Bonny Doon and/or Davenport. Further expanding District 5 to include more Scott's Valley residents would not represent the shared community challenges and rural lifestyle of the San Lorenzo Valley.

More About Your Story : I think residents of SLV and Bonny Doon think of ourselves as a single community with our towns representing each of our idiosyncrasies and cultures. Together we are a cohesive group.

Which County Supervisor District do you live in? : District 1 (Supervisor Koenig)

Give Your Community A Name: **The Eastside**

Tell Us About Your Community : The Eastside is a distinct community in the Santa Cruz area - including the neighborhoods of Pleasure Point, Capitola and Soquel. Shared interests are surfing, recreation, arts, sports - being active and social. Most retail/services (including healthcare) are available within the Eastside, so traveling to the Westside, Midtown, Downtown, or Aptos is often unnecessary and a burden due to traffic. Relevant issues to people on the Eastside include real estate and development, making a bike/run trail on the traintracks, street bike lanes, environmental conservation, retail collapse at Capitola Mall and potential re-development, beach parking, over-tourism, and academic improvement of local schools.

Tell Us About Your Place : The Eastside is a classic location in the Santa Cruz area, and should be fully included in one district. The Eastside is connected by academic, retail, economic, recreational, social and geographic considerations. Most Eastside kids attend school at SUESD Elementary schools, then New Brighton Middle School, then Soquel High, and participate in Junior Lifeguards in Capitola. Most retail shopping and banking is done along 41st, Soquel Ave, and in Capitola. The Eastside surf spots run from Pleasure Point to Capitola, and on big swells you can surf your way down from Sewers to New Brighton. A favorite path of runners and cyclists is from the Rockview down to Capitola through Opal Cliffs. We all share park space (Jade Street, Monterey Ave Park, Brommer, Blue Ball), and the local sports leagues are based around Eastside geography, such as Capitola-Soquel Little League.

More About Your Story : Hopefully redistricting to include the Eastside in one district will provide governmental efficiencies, and help to better serve our community.

Which County Supervisor District do you live in? : District 1 (Supervisor Koenig)

Give Your Community A Name: [Soquel Village](#)

Tell Us About Your Community : Soquel in the park. Closer or walkable farmers markets.

Tell Us About Your Place : Mobile home rent protections, close to shopping & restaurants, and is close to the ocean.

More About Your Story : Walkable restaurants, ATM machines, EV charger, and close by micro-mobility options (bike share).

Which County Supervisor District do you live in? : District 1 (Supervisor Koenig)

Give Your Community A Name: City of Scotts Valley

Tell Us About Your Community : I live in Scotts Valley because it is a community, good police and fire departments, parks as well as schools.

Tell Us About Your Place : I don't want to be associated with the City of Santa Cruz or Live Oak . I moved here to get away from those areas, crime is major factor. The city of Scotts Valley should not be represented by district 1, it should be in district 5.

More About Your Story :

Which County Supervisor District do you live in? : District 1 (Supervisor Koenig)

Give Your Community A Name: City of Scotts Valley

Tell Us About Your Community : Scotts Valley is a city where community priorities include good schools, public safety and the environment. Scotts Valley is family oriented and is home to many seniors. Many residents work in Silicon Valley. Residents enjoy outdoor activities, including visiting our parks and hiking trails. Scotts Valley is a small friendly town where residents greet each other on the street.

Tell Us About Your Place : The portion of Scotts Valley on the east side of Highway 17, where I live, is all within District 1. The larger portion of Scotts Valley on the west side of Highway 17 is all within District 5. I strongly believe that the City of Scotts Valley is one community of interest and should be unified and represented at the County level in one District. This could be either District 1 or District 5.

All of Scotts Valley is one community of interest because all residents share the same parks and recreational opportunities, receive the same City services, share the same religious institution opportunities, share the same Library, shop at the same stores, drive on the same major roads, go the same schools, and love the Scotts Valley life style.

More About Your Story :

Which County Supervisor District do you live in? : District 1 (Supervisor Koenig)

Give Your Community A Name: Live Oak

Tell Us About Your Community : Please review this article for background about highly urbanized but unincorporated Live Oak: https://www.academia.edu/39798396/Between_the_Gulches_The_Twin_Fates_of_Live_Oak_Cityhood_and_the_Broadway-Brommer_Road

We need ONE County Supervisor to represent us as we have NO OTHER local government representatives.

Tell Us About Your Place :

More About Your Story : Also see Norman Poitevin's book "Historic Live Oak" for more background & history.

Which County Supervisor District do you live in? : District 2 (Supervisor Friend)

Give Your Community A Name: Aptos Hills

Tell Us About Your Community : This is a rural community with pockets of residential development among the forested Santa Cruz Mountains. Nisene Marks State Park is adjacent, and scattered areas of agricultural production exist, mostly orchards and vineyards. There is a wide range of economic status that includes multi-million dollar homes with ocean views that are second homes or short-term rentals, and also very simple homes from the post-logging era that provide homes for retired people as well as low-income workers and students. Many areas are served by substandard infrastructure, such as narrow roads maintained by County Service Areas and private wells or small water companies. All are on septic systems. Most rely on fire protection from County Fire Dept. volunteers and CalFire. Some are in high-risk fire areas. Many are experiencing insurance policy cancellations.

Tell Us About Your Place : Aptos Hills should be separate from the urbanized Seacliff and Rio del Mar communities because those areas have little in common with rural dwellers. My community is defined by the Aptos Creek Canyon but also the ridgetops on either side, and are connected with adjacent rural communities of the Trout Gulch and Valencia Canyons. We share in common the two PG&E high voltage transmission lines running through our communities that have been the source of wildland fires in recent history. We are in the Second Supervisorial District.

More About Your Story : All rural roads are in shambles and need resurfacing, with new drainage culverts. Valencia Road culvert failure in 2017 was a harbinger of things to come for the Aptos Hills where there are large metal culverts under the roadways. Roadside brush clearing programs have stopped happening, so the roadways are narrower, with corners made blind by encroaching vegetation. Bicycling on these roadways is hazardous because of increased traffic, faster traffic, and vegetation that encroaches into the roadway. There are more people moving into the rural Aptos Hills areas, because they are often more affordable, but many are renting a room or ADU, hence increasing traffic congestion in the adjacent urban Aptos areas. Also , with the permit approvals of more rural wineries and tasting events, and associated special events, the rural roadways are taxed by extra congestion, and pose a real risk for fire evacuation efforts if ever needed.

Which County Supervisor District do you live in? : District 2 (Supervisor Friend)

Give Your Community A Name: Mobile home residents within the County of Santa Cruz

Tell Us About Your Community : People who reside in mobile home parks. More narrowly, residents of mobile home parks within the unincorporated areas of the County. I serve on the County's Manufactured and Mobilehome Commission; appointed by Supervisor Friend.

Tell Us About Your Place : Pinto Lake Mobile Estates is now in District 2. It should stay in #2. The park is in the unincorporated area, just west of the Sheriff's substation on Green Valley Road, and on the same side of that road as the County's Pinto Lake park. The park is under the County's mobilehome ordinances. County has defended residents there. I represent the park on the County's MobileHome Commission.

More About Your Story : The park is in zip code 95076. It is not in the City of Watsonville. All the parks in the City are in County District 4. The City's mobilehome ordinances are fine. However, it would be difficult for the District 4 Mobilehome Commissioner to have to learn two sets of ordinances. K.I.S.S.

I could not tell from the preliminary map what district the park is dreamt in.

? Is the "Map your Community of Interest" the existing or proposed districts?

Which County Supervisor District do you live in? : District 2 (Supervisor Friend)

Give Your Community A Name: Aptos Hills/Larkin Valley

Tell Us About Your Community : Our neighborhood is an agriculture/residential area of plots of land that are unused but usable. I believe that housing is of utmost importance to county residents. Our area should be allowed to be more easily split or allowed to build ADU's to accommodate the need for housing. There are currently numerous county restrictions in place that are dated back decades, that significantly restrict certain building projects that hurt our local housing progress. Housing matters and we can help this current dilemma Santa Cruz County is experiencing. The state Assembly/Senate recently approved SB9 that would enhance duplexes on single family residences. SB9 requires CITIES allow lots larger than virtually all of the lots in Aptos Hills/Larkin Valley to be approved for two homes or a duplex. This could help seniors who might want to 'age in place' and have a generated income stream. According to the most recent Census Bureau, the average age of our area is 49.6 years old. This age group start to seriously think about retirement. Of the housing units within this region, approximately 80% are owner occupied. This is the time to generate income through other sources, such as ADU's or lot splits. These two criteria alone are indicative and motivation for a unique group of residents(us) that are able and willing to enhance the housing challenges if we were included in the city limits.

Tell Us About Your Place : I believe that our community would be better served if we were incorporated into the city limits of Watsonville so as to have more direct access to services. The unincorporated areas of our county are large. We seem to lose the privileges that being in the city limits would allow, including housing restraints now in place from the county. Those that live in the Aptos Hills/ Larkin Valley have an enhanced ability to help the housing challenges that face our county, if given the opportunity to do so. We are willing and able to build the ADU's and do lot splits that our county and state are deeming as needed for our future. Our state has lost residents at an alarming rate due to housing costs. As residents of Larkin Valley, we have the financial resources as well as the land to build, but are restricted in doing so. Many of the proposed state legislation that help building of additional units are aimed at cities and exclude the unincorporated county regions, such as Aptos Hills/Larkin Valley. We would be best served to be in the city limits of Watsonville, since we currently are recognized partially in Watsonville via our zip code (95076), but with few of the services...

More About Your Story :

Which County Supervisor District do you live in? : District 3 (Supervisor Coonerty)

Give Your Community A Name: Midtown

Tell Us About Your Community : Our neighborhood has it's roots in the historic Villa de Branciforte township prior to annexation into Santa Cruz in 1905. Looking at old maps, I see familiar names of friends and families. The Villa Branciforte families are still here & I'd anticipate adding our neighborhood to District 1 could address Hispanic representational concerns. Currently we are in District 3 which includes all of North County and Santa Cruz city. I think we are more unique than that historically and demographically.

Tell Us About Your Place : I would like to see my neighborhood added to District 1. My neighborhood has more in common with Live Oak than Santa Cruz. Historically we were not a part of Santa Cruz, our development wave came later - just like Live Oak. Many of the workers serving Dominican live in Midtown and Live Oak. It makes more sense for our shared concerns to be addressed in a common District 1 boundary. We are bordered by Hwy 1, Branciforte Ave, Arana Gulch and above the Harbor. Please see the map I have submitted.

More About Your Story : We are largely a hard working, middle class community with concerns about representation and safety.

Which County Supervisor District do you live in? : District 4 (Supervisor Caput)

Give Your Community A Name: Coleman Cul-de-sac

Tell Us About Your Community : We all feel that we are residents of the Watsonville community but do not enjoy many of the same benefits since we are unincorporated Santa Cruz County. We are very distinct from the rest of unincorporated county and have much different financial needs; we are mostly agricultural workers who feel much more at home in Watsonville then being lumped together with unincorporated Santa Cruz.

Tell Us About Your Place : We think that we should be incorporated into the city of Watsonville. We are currently right on the boundary line of unincorporated Santa Cruz but feel it makes sense for us to move locations. All that divides us from Watsonville is East lake Ave and as you'll see directly across from us and for much further down it is all considered Watsonville community. As Watsonville has grown this boundary has remained relatively unchanged and with growth in the future it's time for this boundary to change.

More About Your Story :

Which County Supervisor District do you live in? : District 5 (Supervisor McPherson)

Give Your Community A Name: [Scotts Valley](#)

Tell Us About Your Community : I write today to express my opinion that it's important for you to re-consolidate the City of Scotts Valley into one supervisor district in Santa Cruz County.

Tell Us About Your Place : Currently it is split into 2 districts separated by Highway 17, but the community interests are the same on both sides of Highway 17. The children go to the same schools. The adults shop at the same stores. We are served by the same police and fire services, and we use the same parks and recreation facilities. Dividing Scotts Valley into two supervisor districts dilutes our voice and our vote, and should not have been done in the first place.

More About Your Story :

Which County Supervisor District do you live in? : District 5 (Supervisor McPherson)

Give Your Community A Name: San Lorenzo Valley

Tell Us About Your Community : Our community includes rural residents with interests in homesteading, animal husbandry, self-sufficiency. We are connected through the remoteness of our homes and our shared small communities up and down highway 9. We track water issues, trauma and rebuilding after the CZU fire, and constant struggles with PG&E.

Tell Us About Your Place : Geographically and culturally the towns along Hwy 9 share much in terms of points of reference, communities, and education. We are a tight-knit group. The residents of Bonny Doon share our point of view, needs, and community focus.

More About Your Story : I think residents of SLV and Bonny Doon think of ourselves as a single community with our towns representing each of our idiosyncrasies and cultures. Together we are a cohesive group.

Additional Correspondence Received

Rita Sanchez

From: Jean Brocklebank <jeanbean@baymoon.com>
Sent: Thursday, October 14, 2021 10:18 AM
To: Cheri O'Neil
Cc: Redistricting2021; First District
Subject: Proposed shift from District 3 to District 1

Follow Up Flag: Follow up
Flag Status: Flagged

****CAUTION:This is an EXTERNAL email. Exercise caution. DO NOT open attachments or click links from unknown senders or unexpected email.****

Dear Cheri and ARC 21 ~

We whole heartedly support following recommendation:

2. Consider proposal by Commissioner O'Neil to move the area east of the Harbor from District 3 to District 1 and align District 1 to the Santa Cruz city limits. This proposal moves 613 people from District 3 to District 1.

Sincerely,
 Jean Brocklebank
 Michael Lewis
 1190 7th Avenue
 Santa Cruz CA

Attachment: COI forms and additional correspondence - Attachment 2 (11545 : Public Hearing to consider proposed changes to supervisory

Rita Sanchez

From: dwinegarden@comcast.net
Sent: Friday, October 8, 2021 8:46 PM
To: Redistricting2021
Cc: Board Of Supervisors
Subject: Add UCSC and Bonny Doon to District Five

Follow Up Flag: Follow up
Flag Status: Flagged

******CAUTION:**This is an EXTERNAL email. Exercise caution. DO NOT open attachments or click links from unknown senders or unexpected email.****

Hello, I am a resident of district 5. I strongly support:

- Adding the communities of UCSC and Bonny Doon to District Five to balance the populations of Districts 3 & 5. These are similar mountain communities with similar interests and needs.

Thank you

David Winegarden

Rita Sanchez

From: Jeanette Guire <jguire@aol.com>
Sent: Thursday, October 7, 2021 1:04 PM
To: Redistricting2021
Subject: Re: Redistricting of 5th District

Follow Up Flag: Follow up
Flag Status: Flagged

******CAUTION:**This is an EXTERNAL email. Exercise caution. DO NOT open attachments or click links from unknown senders or unexpected email.****

Greetings, my preference as a 5th District resident is to allow Bonny Doon to be incorporated in the 5th district.

It makes some sense to add Bonny Doon residents to District Five, if any change must be made, because ours clearly are "communities of concern" and share similar geographic features. This move also leaves the other districts in balance without creating a "domino" effect.

Jeanette Ponzo Guire
 Felton Resident

Attachment: COI forms and additional correspondence - Attachment 2 (11545 : Public Hearing to consider proposed changes to supervisory

Rita Sanchez

From: Phyllis Endicott <phyllisendicott@gmail.com>
Sent: Wednesday, September 8, 2021 10:14 AM
To: Redistricting2021
Subject: redistrict my area.

Follow Up Flag: Follow up
Flag Status: Flagged

******CAUTION:**This is an EXTERNAL email. Exercise caution. DO NOT open attachments or click links from unknown senders or unexpected email.****

Dear Redistricting Panel,

I am currently in district 18 with Anna Eschoo as my representative.

While I approve of Rep. Eschoo, I feel the San Lorenzo Valley belongs in a district in Santa Cruz County. Going to a meeting in Atherton isn't like my community in Ben Lomond.

It would be much easier to have a representative in my area.

Thank you for considering this when you draw the new district lines.

Phyllis Endicott

Attachment: COI forms and additional correspondence - Attachment 2 (11545 : Public Hearing to consider proposed changes to supervisory

Rita Sanchez

From: John McCombs <jm@johnmcombs.com>
Sent: Tuesday, September 7, 2021 3:38 PM
To: Redistricting2021
Subject: Scotts Valley

Follow Up Flag: Follow up
Flag Status: Flagged

****CAUTION:This is an EXTERNAL email. Exercise caution. DO NOT open attachments or click links from unknown senders or unexpected email.****

The City of Scotts Valley should be in one district, not divided by Hwy 17.

John McCombs
601 Navarra Drive
Scotts Valley, CA 95066

Attachment: COI forms and additional correspondence - Attachment 2 (11545 : Public Hearing to consider proposed changes to supervisory

Rita Sanchez

From: James F. Mosher
Sent: Wednesday, September 1, 2021 3:05 PM
To: Rita Sanchez
Subject: Fw: Radical redistricting

Follow Up Flag: Follow up
Flag Status: Flagged

Rita,

I received this email from Jim Coffis, a constituent in Ben Lomond. Should this should be shared with the commission?

Jim Mosher

From: Jim Coffis <jcoffis@gmail.com>
Sent: Wednesday, August 25, 2021 2:06 PM
To: James F. Mosher <James.Mosher@santacruzcounty.us>
Subject: Radical redistricting

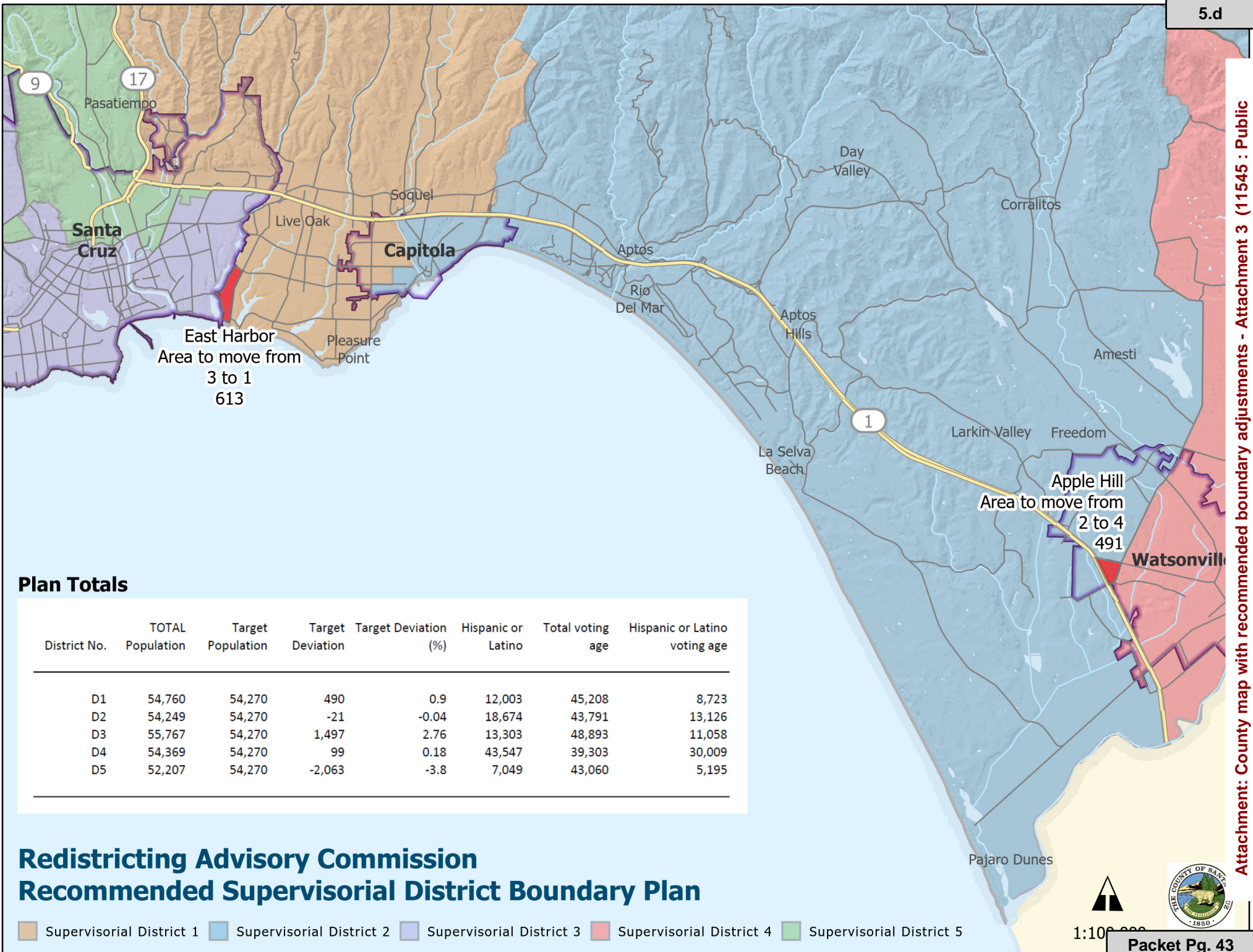
******CAUTION:**This is an EXTERNAL email. Exercise caution. DO NOT open attachments or click links from unknown senders or unexpected email.****

Hey Jim,

Noticed you are a member of the Redistricting panel so I'll throw out my radical proposal that could have the potential of really shaking up local politics: Draw the lines concentrically from the coast so that coastal zone residents are in one district, rural mountain residents in another, etc. I know this is highly unlikely but it would be interesting to see how the population spreads would affect the geographical size of each new district.

Best,

Jim



East Harbor
Area to move from
3 to 1
613

Apple Hill
Area to move from
2 to 4
491

Plan Totals

District No.	TOTAL Population	Target Population	Target Deviation	Target Deviation (%)	Hispanic or Latino	Total voting age	Hispanic or Latino voting age
D1	54,760	54,270	490	0.9	12,003	45,208	8,723
D2	54,249	54,270	-21	-0.04	18,674	43,791	13,126
D3	55,767	54,270	1,497	2.76	13,303	48,893	11,058
D4	54,369	54,270	99	0.18	43,547	39,303	30,009
D5	52,207	54,270	-2,063	-3.8	7,049	43,060	5,195

**Redistricting Advisory Commission
Recommended Supervisory District Boundary Plan**

Supervisory District 1 Supervisory District 2 Supervisory District 3 Supervisory District 4 Supervisory District 5



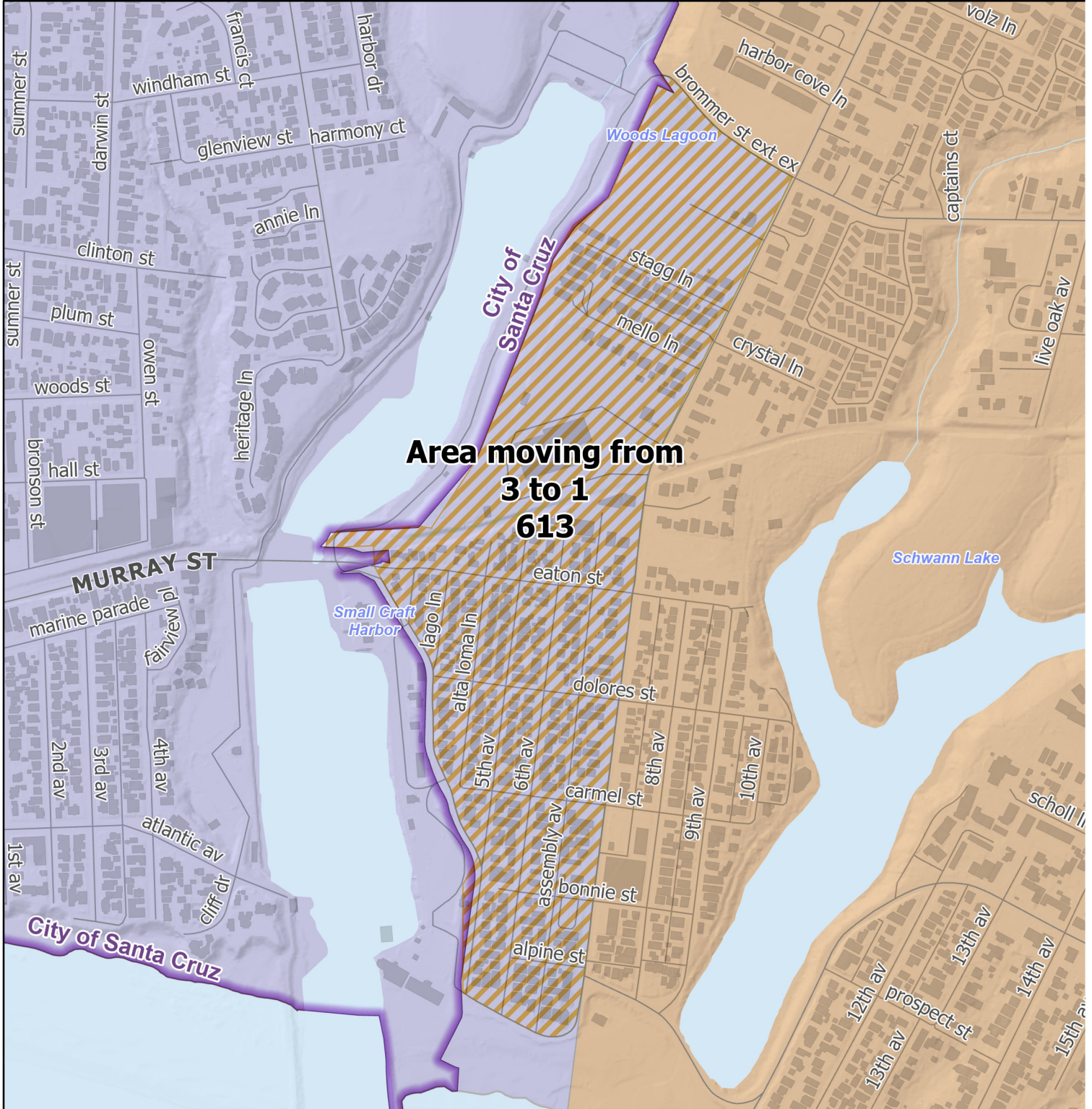
1:100,000



ARC Recommended Supervisorial District Boundaries

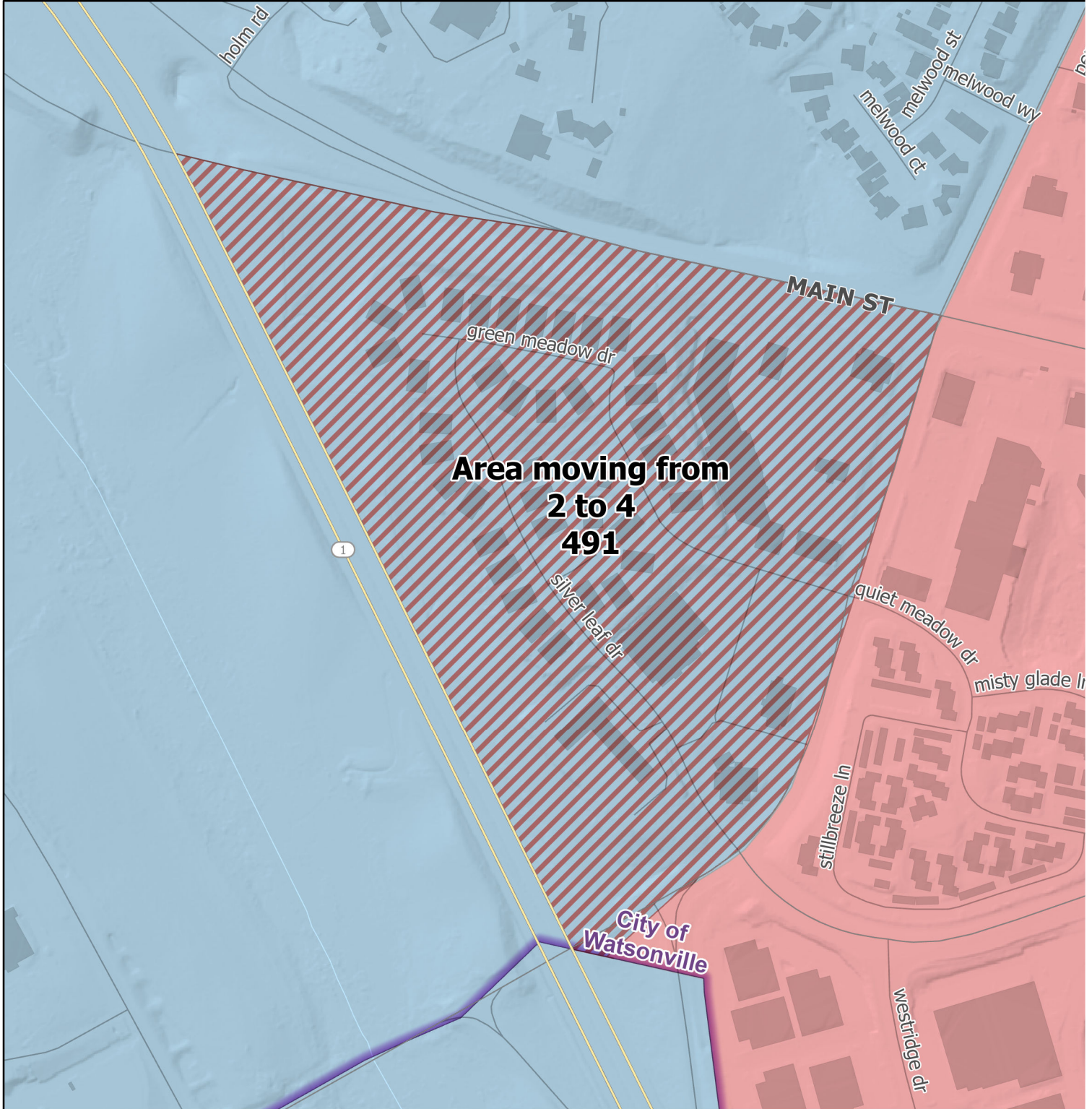
East Harbor - District 3 to 1

5.e



Change Area	TOTAL Population	Hispanic or Latino	TOTAL Voting Age Population	Hispanic or Latino Voting Age Population
East Harbor	613	87	544	68

Attachment: Map with recommended boundary adjustments at East Harbor - Attachment 3A (11545 : Public Hearing to consider proposed



Attachment: Map with recommended boundary adjustments at Apple Hill - Attachment 3B (11545 : Public Hearing to consider proposed

Change Area	TOTAL Population	Hispanic or Latino	TOTAL Voting Age Population	Hispanic or Latino Voting Age Population
Apple Hill	491	362	349	243

Population data sets by districts incorporating Proposal A and B

Population Summary Report*

District No.	TOTAL Population	Target Population	Target Deviation	Target Deviation (%)	Total (%)	Total voting age (%)	Deviation from the target (%)	Hispanic or Latino (%)	Non-Hispanic/Latino White (%)	Non-Hispanic/Latino Black (%)	Non-Hispanic/Latino American Indian/Alaskan Native (%)	Non-Hispanic/Latino Hawaiian or Other Pacific Islander (%)	Non-Hispanic/Latino Other race (%)	Non-Hispanic/Latino Two or more races (%)
D1	54,760	54,270	490	0.9	100	82.56	0.89	21.92	66.33	0.86	0.28	0.16	0.66	5.83
D2	54,249	54,270	-21	-0.04	100	80.72	-0.04	34.42	56.61	0.64	0.3	0.09	0.52	4.28
D3	55,767	54,270	1,497	2.76	100	87.67	2.68	23.85	58	2.44	0.38	0.1	0.71	6.19
D4	54,369	54,270	99	0.18	100	72.29	0.18	80.1	14.29	0.47	0.26	0.04	0.37	1.75
D5	52,207	54,270	-2,063	-3.8	100	82.48	-3.95	13.5	73.88	0.84	0.36	0.11	0.8	6.49

Voting Age*

District No.	TOTAL Population	Target Population	Target Deviation	Target Deviation (%)	Total (%)	Hispanic or Latino voting age (%)	Non-Hispanic/Latino White voting age (%)	Non-Hispanic/Latino Black voting age (%)	Non-Hispanic/Latino American Indian/Alaskan Native voting age (%)	Non-Hispanic/Latino Asian voting age (%)	Non-Hispanic/Latino Hawaiian or Other Pacific Islander voting age (%)	Non-Hispanic/Latino Other race voting age (%)	Non-Hispanic/Latino Two or more races voting age (%)
D1	54,760	54,270	490	0.9	100	15.93	57.39	0.8	0.24	3.48	0.12	0.52	4.07
D2	54,249	54,270	-21	-0.04	100	24.2	49.38	0.51	0.24	2.81	0.08	0.44	3.06
D3	55,767	54,270	1,497	2.76	100	19.83	51.8	2.31	0.38	7.91	0.1	0.57	4.78
D4	54,369	54,270	99	0.18	100	55.2	12.51	0.41	0.21	2.42	0.04	0.24	1.26
D5	52,207	54,270	-2,063	-3.8	100	9.95	62.77	0.7	0.34	3.48	0.11	0.64	4.5

*Data set values expressed at percentages

Population data sets by districts incorporating Proposal A and B

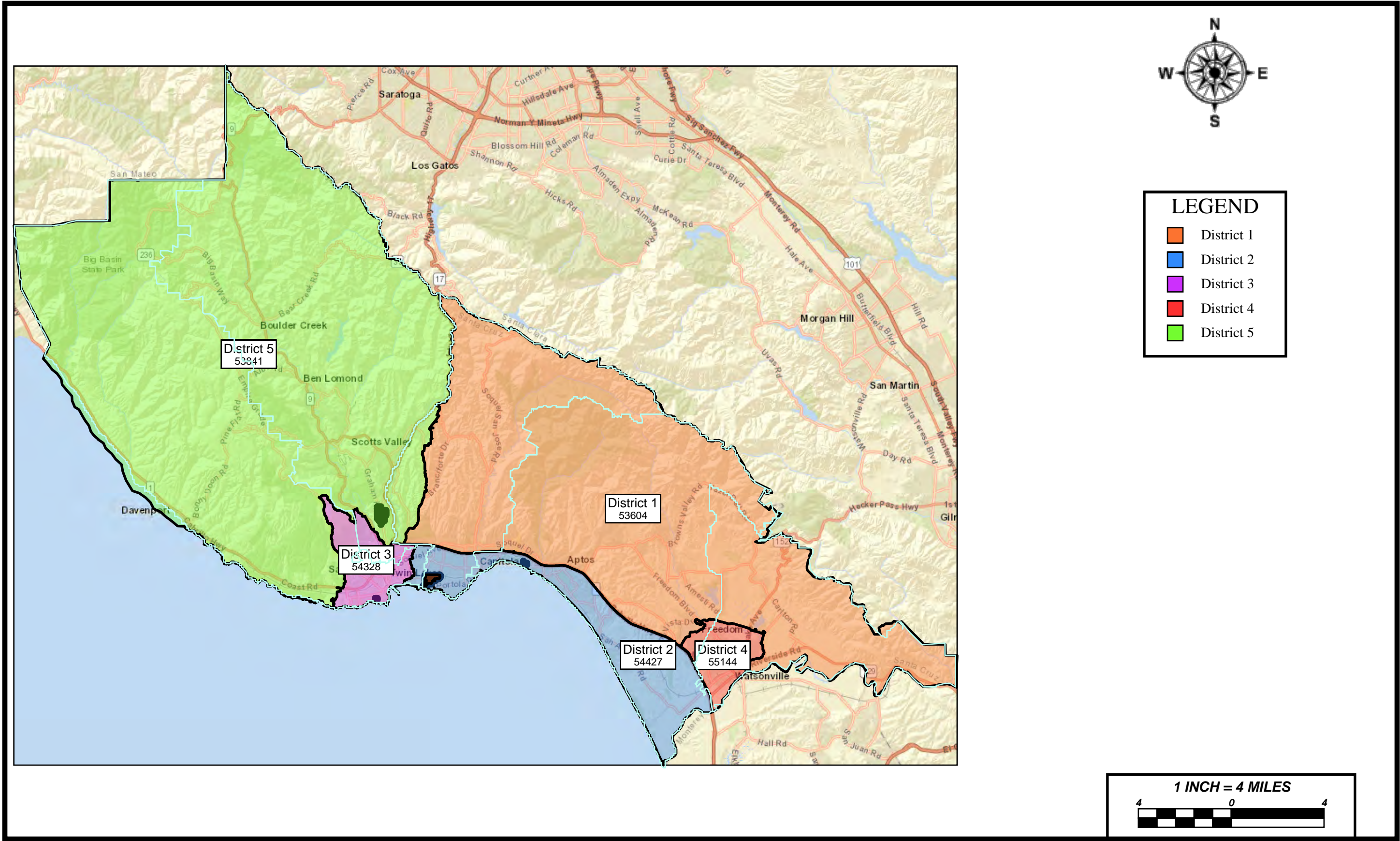
Population Summary Report*

District No.	TOTAL Population	Target Population	Target Deviation	Target Deviation (%)	Total	Total voting age	Deviation from the target	Hispanic or Latino	Non-Hispanic/Latino White	Non-Hispanic/Latino Black	Non-Hispanic/Indian/Alaskan Native	Non-Hispanic/Latino Asian	Non-Hispanic/Latino Hawaiian or Other Pacific Islander	Non-Hispanic/Latino Other race	Non-Hispanic/Latino Two or more races
D1	54,760	54,270	490	0.9	54,760	45,208	490	12,003	36,323	472	152	2,168	87	362	3,193
D2	54,249	54,270	-21	-0.04	54,249	43,791	-21	18,674	30,713	349	162	1,695	50	282	2,324
D3	55,767	54,270	1,497	2.76	55,767	48,893	1,497	13,303	32,345	1,359	214	4,638	58	396	3,454
D4	54,369	54,270	99	0.18	54,369	39,303	99	43,547	7,767	255	144	1,482	23	200	951
D5	52,207	54,270	-2,063	-3.8	52,207	43,060	-2,063	7,049	38,573	441	189	2,091	60	418	3,386

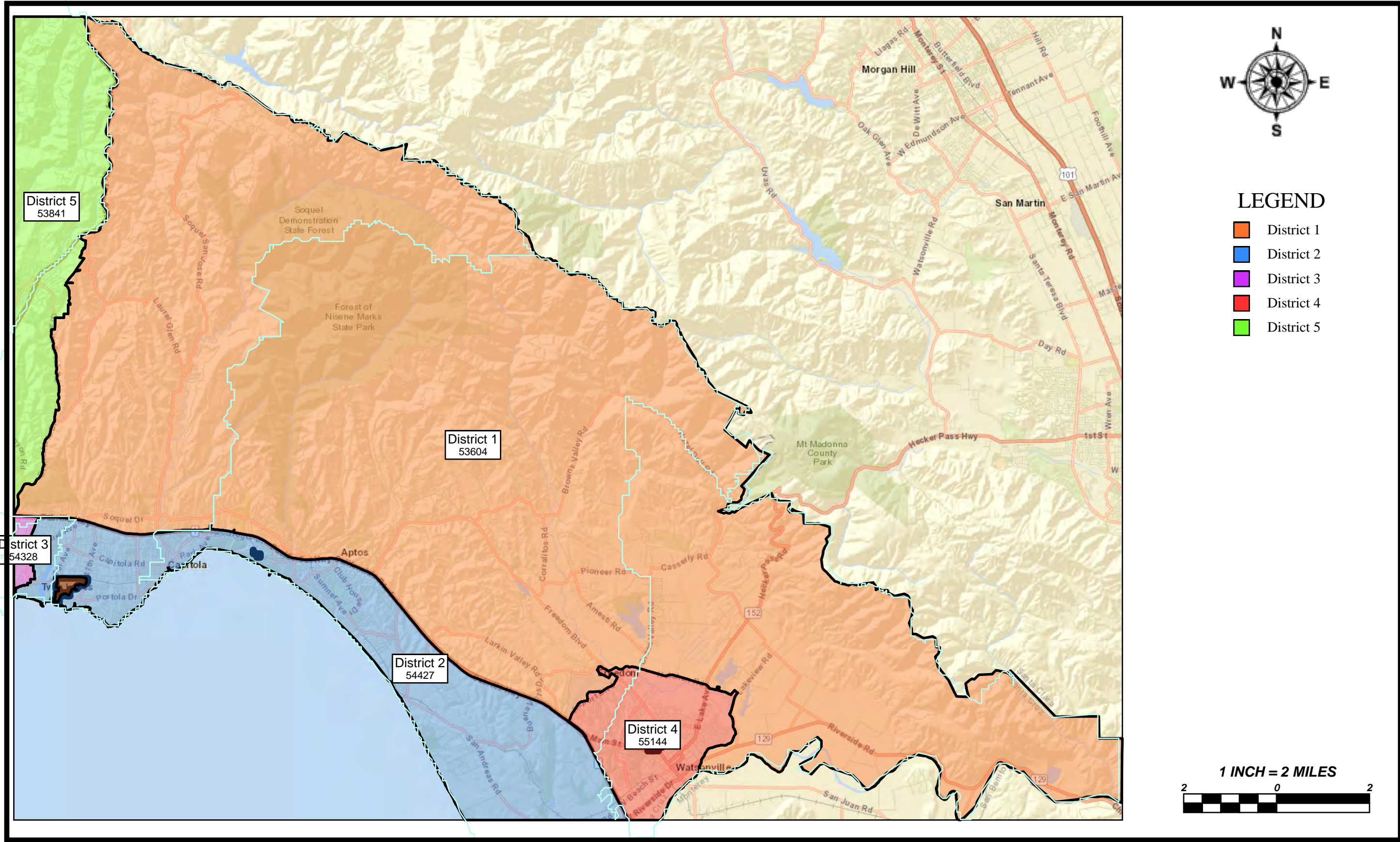
Voting Age*

District No.	TOTAL Population	Target Population	Target Deviation	Target Deviation (%)	Total	Total voting age	Deviation from the target	Hispanic or Latino voting age	Non-Hispanic/Latino White voting age	Non-Hispanic/Latino Black voting age	Non-Hispanic/Indian/Alaskan Native voting age	Non-Hispanic/Latino Asian voting age	Non-Hispanic/Latino Hawaiian or Other Pacific Islander voting age	Non-Hispanic/Latino Other race voting age	Non-Hispanic/Latino Two or more races voting age
D1	54,760	54,270	490	0.9	54,760	45,208	490	8,723	31,428	438	132	1,905	67	285	2,230
D2	54,249	54,270	-21	-0.04	54,249	43,791	-21	13,126	26,786	278	132	1,527	45	238	1,659
D3	55,767	54,270	1,497	2.76	55,767	48,893	1,497	11,058	28,887	1,287	210	4,411	53	319	2,668
D4	54,369	54,270	99	0.18	54,369	39,303	99	30,009	6,801	223	116	1,318	20	133	683
D5	52,207	54,270	-2,063	-3.8	52,207	43,060	-2,063	5,195	32,768	365	177	1,816	56	336	2,347

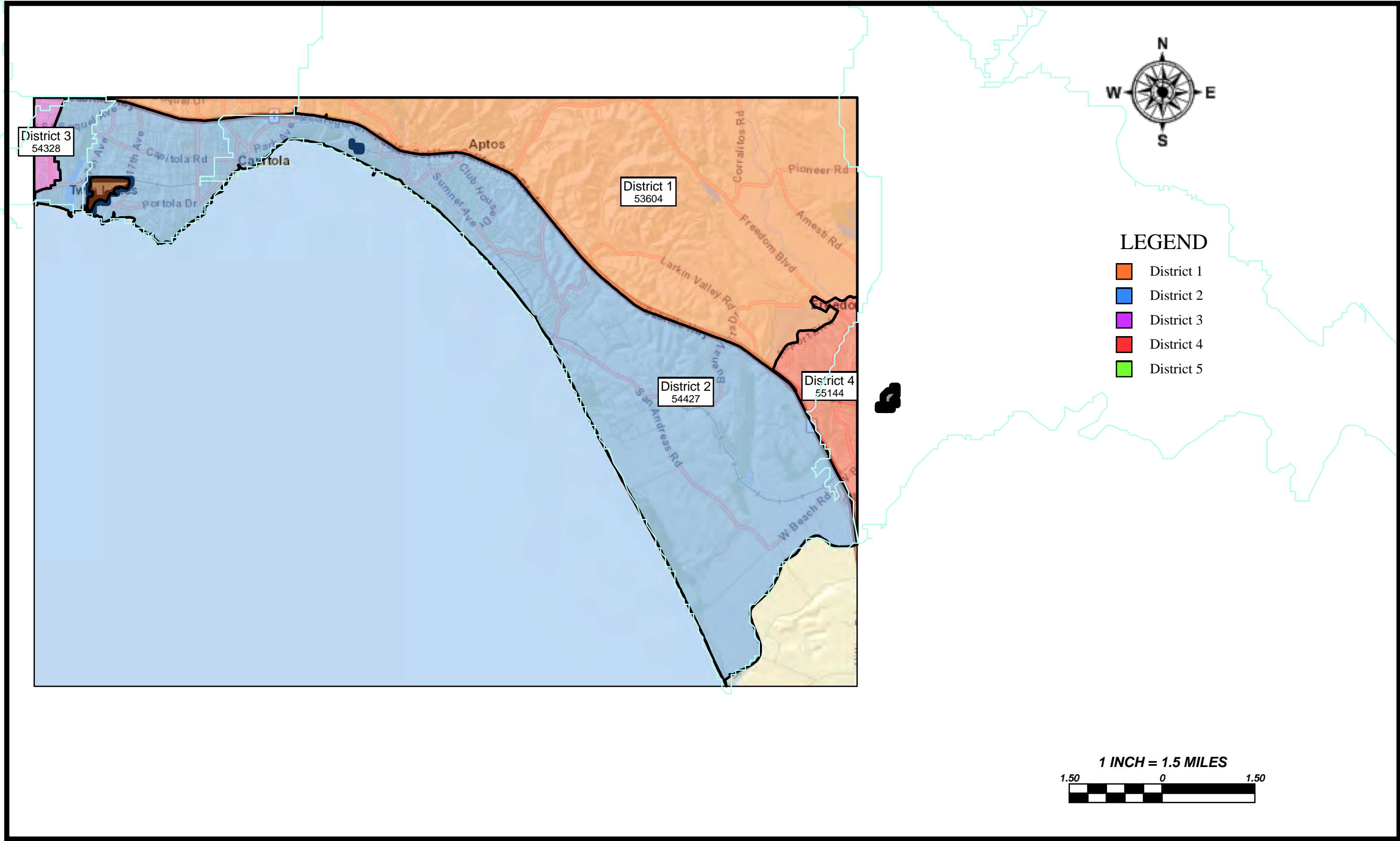
*Data set values expressed as numerical amounts



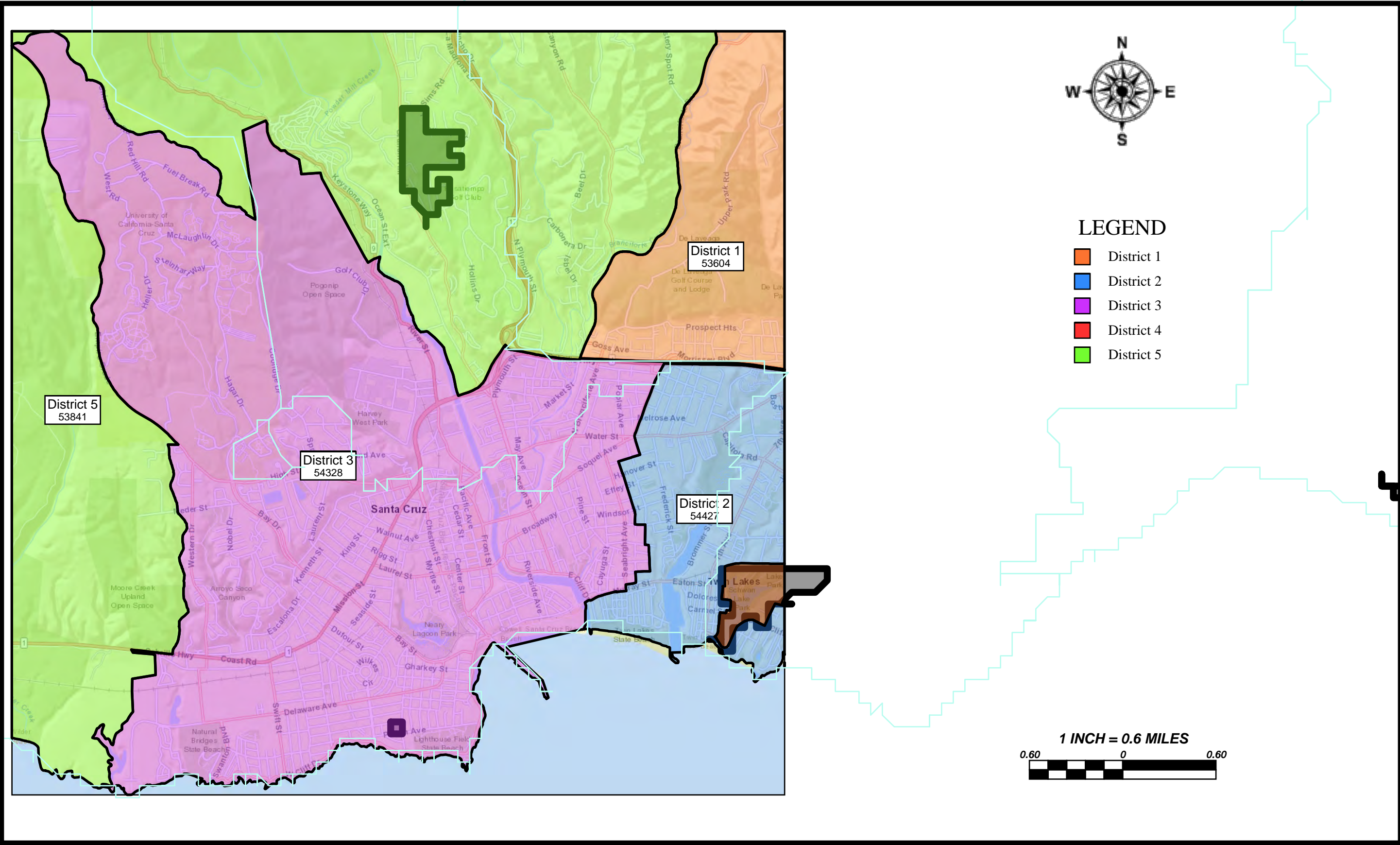
Attachment: Map submitted from the public - Attachment 4 (11545 : Public Hearing to consider proposed changes to supervisory districts)



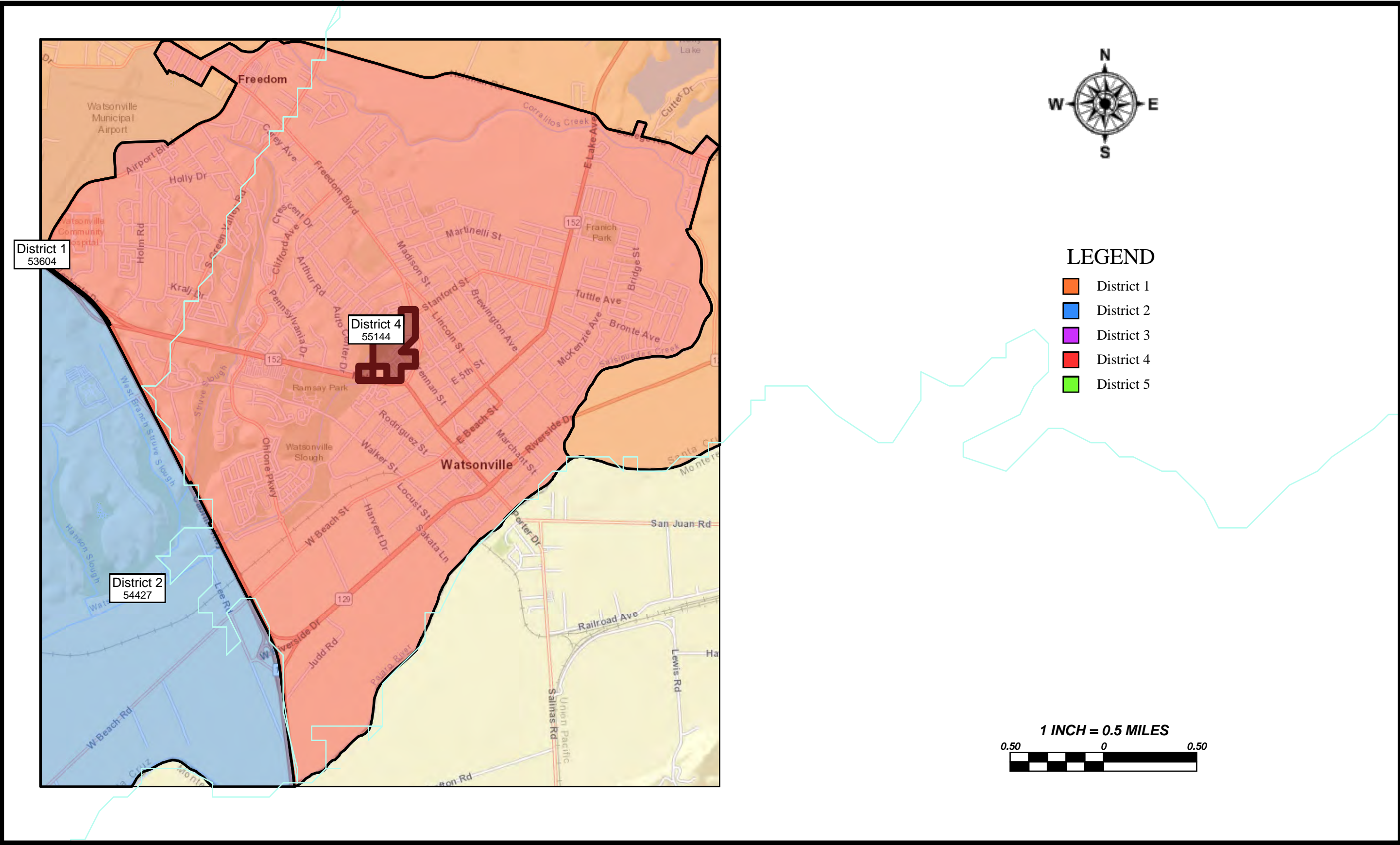
Attachment: Map submitted from the public - Attachment 4 (11545 : Public Hearing to consider proposed changes to supervisory districts)



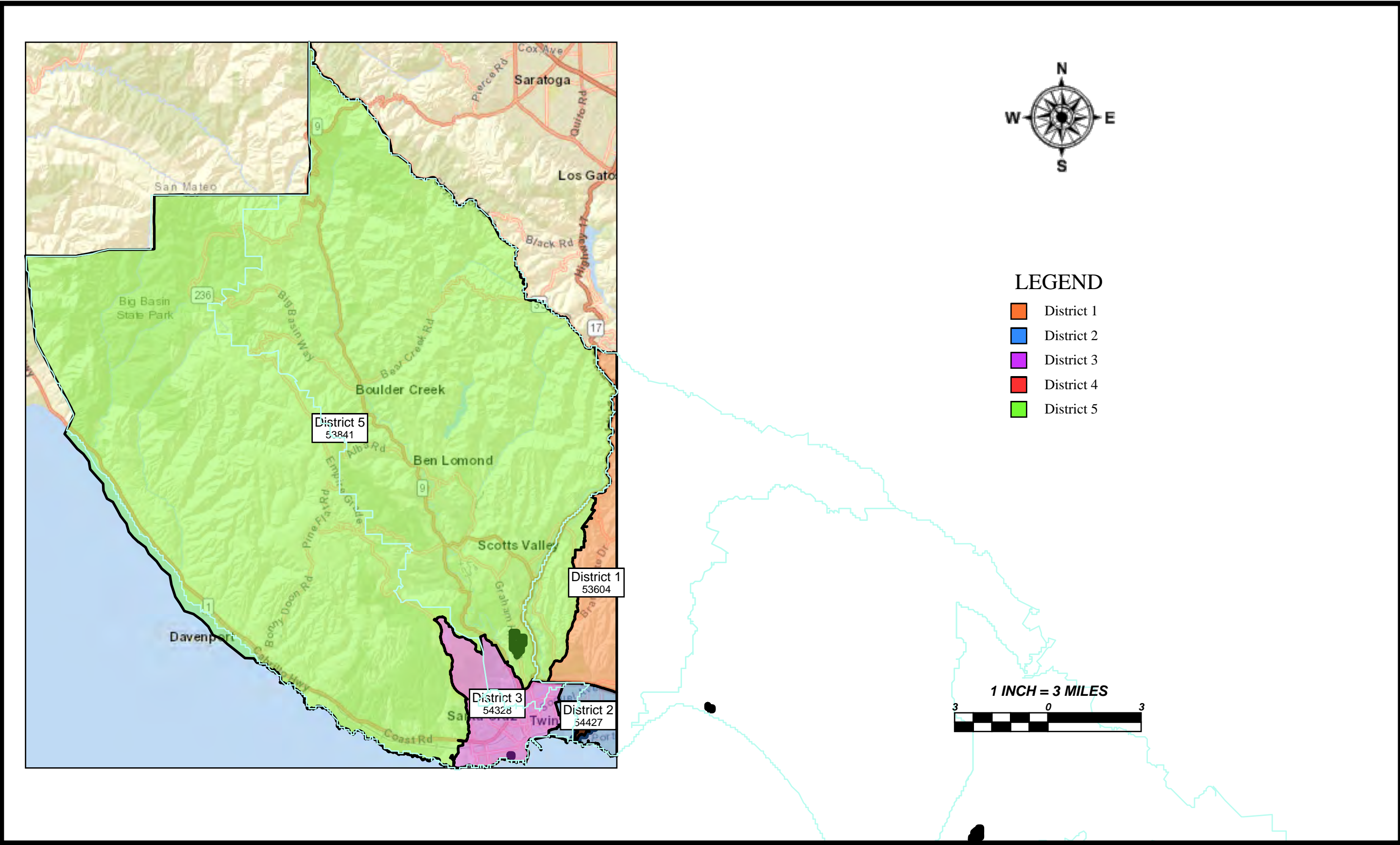
Attachment: Map submitted from the public - Attachment 4 (11545 : Public Hearing to consider proposed changes to supervisory districts)



Attachment: Map submitted from the public - Attachment 4 (11545 : Public Hearing to consider proposed changes to supervisorial districts)



Attachment: Map submitted from the public - Attachment 4 (11545 : Public Hearing to consider proposed changes to supervisorial districts)



Attachment: Map submitted from the public - Attachment 4 (11545 : Public Hearing to consider proposed changes to supervisory districts)

Changes to Supervisorial District boundaries proposed by Advisory Redistricting Commission members but not recommended for adoption by the Board of Supervisors

- A proposal from the First District to reconfigure the “Jewel Box” neighborhood boundaries, to move that portion of this neighborhood currently in the Second District to the First District. The revised boundary would have been Soquel Creek. This proposal would have moved an additional 1,064 persons from the Second to the First District. Considered in this proposal was that the Jewel Box neighborhood was a Community of Interest to be consolidated in a single district, and that the proposal would yield a more equal representation of the Capitola city boundaries among the First and Second Districts.
- There were two proposals from the Third District.
 - The first was to reconfigure the boundaries between the Third and the Fifth District at the University of California Santa Cruz. This proposal would have moved a population of about 2,474 from the Third to the Fifth District. This was intended to improve substantial equality between the two Districts, and a more equal representation of the campus population between the Fifth and Third Districts, in the same way there is shared representation for each of the four incorporated cities.
 - The second proposal was adjustment to the southern boundary between the Third and Fifth District which would reconfigure the area around the County Building on Ocean Street, moving a population of 294 from the Third to the Fifth District. This section is bounded by Water and Ocean Streets, the San Lorenzo River and Branciforte Creek. Considered in this proposal was the intention to share among the two district impacts, and solutions, to homeless encampments permitted in this area.
- A proposal from the Fourth District that would absorb from the Second District a corridor from Beach Street to the Monterey Bay, and from the Pajaro River to about Sunset Beach Road, which would move a population of 449 from the Second to Fourth Districts. The consideration was that this proposal reflected a community of interest shared among the agricultural support industries located in this area, and consolidated interests associated with the Pajaro Valley watershed.

While Commissioners expressed respect for these proposals, they did not reach consensus to include them in the recommended plan, primarily due to a sense that there was a lack of, or limited, public testimony requesting these changes, and little time remaining in the Public Hearing schedule to solicit feedback from those who would be affected.