



County of Santa Cruz

COUNTY ADMINISTRATIVE OFFICE

701 OCEAN STREET, SUITE 520, SANTA CRUZ, CA 95060-4073

(831) 454-2100 FAX: (831) 454-3420 TDD: (831) 454-2123

SUSAN MAURIELLO, J.D., COUNTY ADMINISTRATIVE OFFICER

September 6, 2011

Agenda: September 13, 2011

BOARD OF SUPERVISORS

County of Santa Cruz

701 Ocean Street

Santa Cruz, CA 95060

Redistricting of Supervisorial Boundaries – Ordinance Establishing 2011 Boundaries

Dear Members of the Board:

On August 23, 2011, your Board conducted a Public Hearing to consider redistricting plans that have been submitted by the County's Redistricting Task Force and others, and continued the Public Hearing to today for the purposes of adopting an ordinance to amend Chapter 2.04 of the Santa Cruz County Code to establish the Supervisorial District boundaries as a result of the 2010 Census. Subsequent to your meeting, the City of Scotts Valley has provided an additional plan for two alternatives for your consideration. The following report provides a summary of the legal requirements and an update on the redistricting process to date.

Summary of Legal Requirements and Process to Date

Redistricting is governed by the California Elections Code and the United States Voting Rights Act. The Board of Supervisors is charged with the legal responsibility for adjusting supervisorial district boundaries every ten years utilizing census data from the federal government "so that the districts shall be as nearly equal in population as may be" (Elections Code Section 21500). In addition, districts shall comply with the Voting Rights Act of 1965, Section 1973 of Title 42 of the US Code, as amended.

The statutes require that in establishing the boundaries of the districts, the Board may give consideration to the factors of (a) topography, (b) geography, (c) cohesiveness, contiguity, integrity, and compactness of territory, and (d) community of interests of the districts (Elections Code Section 21500). The statutory deadline for adjusting the supervisorial boundaries is the first day of November following the year in which the federal census is taken.

In addition to the statutory requirements, your Board also affirmed four principles for 2011 that were adopted for the 2001 effort:

1. To the extent possible, the current district boundaries will be preserved.
2. The public will have all the opportunities provided by law to participate in the redistricting process and provide input to the Board.
3. Communities of interest will be preserved to the extent possible.
4. Each Supervisor will have the opportunity to suggest changes to his or her district's boundaries to the extent such changes are necessary prior to the public hearings to be held on the redistricting plan.

In consideration of the legal requirements and consistent with the statutes and principals, the Redistricting Task Force developed a Redistricting Plan for consideration by your Board, in preparation for the first of a series of Public Hearings to consider redistricting plans. Subsequent to developing the plan, the Task Force representative from the Third District requested that a different proposed boundary for the Third and Fifth Districts be considered at the University of California, Santa Cruz (UCSC) campus, with the same boundaries proposed for the First, Second and Fourth Districts. The Task Force also considered a plan for the boundaries for the Second and Fourth District boundaries that was submitted by Daniel Dodge, as a member of the public.

The plans that were provided for your Board's consideration were described in detail in the staff report for the August 23rd Public hearing, which is included for your reference as Attachment 1.

Since your last meeting, the Redistricting Task Force met on August 24th and on September 1st to consider the public testimony received during the August 23rd hearing and prior hearings, and to discuss alternative proposals that were in the process of being developed for your Board's consideration by representatives of the Scotts Valley City Council. These alternative scenarios were ultimately considered by the Scotts Valley City Council at their meeting on Wednesday, September 7th, and a Resolution was adopted at that time to propose the two alternatives to your Board.

The staff report from the City Attorney, the executed Resolution No. 1871, and Scotts Valley plans are included as Attachment 2. The staff review and County drawn maps of the proposed alternatives are Attachment 3.

At their meeting on September 1st, the Task Force affirmed the recommendation of their plan, and maps illustrating the new Supervisorial Districts are referred to as Plan 1. Attachment 4 includes information on Plan 1 and Plan 2, which was submitted by the Third District, proposing an alternative boundary at the UCSC campus. As indicated previously, County Counsel has reviewed the proposed maps and data and believes that both Plan 1 and Plan 2 are responsive to mandates contained in the Election Code and consistent with the Voting Rights Act.

The Elections Code prescribes that the Board shall hold at least one public hearing on any proposal to adjust the boundaries of a district, prior to a public hearing at which the Board of Supervisors votes to approve or defeat the proposal (Section 21500.1). The public hearing for which your Board could take no action to approve or defeat a particular proposal was held on August 23rd, with public hearings scheduled for September 13th and 20th for the purposes of adopting amendments to County Code Section 2.04 to establish new Supervisorial District boundaries, as required by state and federal statutes. This schedule was recommended by the Redistricting Task Force and established by your Board at your regularly scheduled meeting on May 24, 2011, in order to meet the statutory deadline of November 1st.

Given that an additional plan has now been submitted for your Board's consideration, it is recommended that your Board establish Friday, September 16, 2011 as the final day for which a redistricting plan may be submitted for your Board's consideration, and establish a new schedule for public hearings to adopt a redistricting plan as follows:

Date and Time	Purpose	Location
Tuesday, August 23 rd , 9:00 a.m. or thereafter	Public Hearing for presentation of redistricting plans	Board of Supervisors' Chambers, 701 Ocean Street, Santa Cruz
Tuesday, September 13 th , 9:00 a.m. or thereafter	Public Hearing for presentation of redistricting plans	Board of Supervisors' Chambers, 701 Ocean Street, Santa Cruz
Tuesday, September 20 th , 10:45 a.m.	Public Hearing to adopt Redistricting Plan – First reading of Ordinance	Board of Supervisors' Chambers, 701 Ocean Street, Santa Cruz
Tuesday, October 4 th , 9:00 a.m. or thereafter	Public Hearing to adopt Redistricting Plan – Second reading of Ordinance	Board of Supervisors' Chambers, 701 Ocean Street, Santa Cruz

Summary and Conclusion

Consistent with legal guidance, the redistricting process has been an inclusive and public one. As directed by your Board, public meetings were convened on June 14th in Santa Cruz and June 20th in Watsonville. The County's website included a Redistricting section, with easy-to-use tools for the public to describe and map their communities of interest. Two kiosks with redistricting software were made available for public use at the County Clerk and Watsonville City Clerk's offices, and Geographic Information Services (GIS) staff has been available to assist the public to develop plans. The County's Redistricting Task Force met seven times between late April and early September to consider public testimony and plans submitted by others, and to develop a plan or plans for your Board's consideration.

It is therefore RECOMMENDED that your Board take the following actions:

1. Accept and file this report on the Redistricting of Supervisorial boundaries;
2. Approve September 16, 2011 at 5:00 p.m. PDT as the date and time for which redistricting plans must be received for consideration by the Board of Supervisors approve the Public Hearing schedule as now proposed above, and direct the Clerk of the Board to notice the Public Hearing for purposes of adopting a Redistricting Plan for Tuesday, September 20, 2011;
3. Provide direction to staff as may be appropriate, so that staff may develop an ordinance to amend the County Code Chapter 2.04 with new boundaries, with metes and bounds legal descriptions, maps, and a listing of County parcels by Supervisorial District; and
4. Open the public hearing, take public testimony, and continue the Public Hearing to Tuesday, September 20, 2011 at 10:45 a.m.

Very truly yours,


SUSAN A. MAURIELLO
County Administrative Officer

SAM/sp/public hearing 9 12 11 cover.doc

Attachments: 1: Staff Report, Public Hearing, August 23, 2011
2: Alternative Scenarios submitted by Scotts Valley City Council
3: Staff review, with County maps
4: District Maps, Redistricting Plans 1 and 2

Copy to: Redistricting Task Force
County Clerk
County Counsel
Information Services Director
GIS Manager
Each City Clerk

**MATERIALS FROM AUGUST 23, 2011
PUBLIC HEARING**

Letter of County Administrative Officer with
Attachments



County of Santa Cruz

COUNTY ADMINISTRATIVE OFFICE

701 OCEAN STREET, SUITE 520, SANTA CRUZ, CA 95060-4073

(831) 454-2100 FAX: (831) 454-3420 TDD: (831) 454-2123

SUSAN MAURIELLO, J.D., COUNTY ADMINISTRATIVE OFFICER

August 18, 2011

Agenda: August 23, 2011

BOARD OF SUPERVISORS
County of Santa Cruz
701 Ocean Street
Santa Cruz, CA 95060

Redistricting of Supervisorial Boundaries – Preliminary Plans

Dear Members of the Board:

On August 9th your Board scheduled a Public Hearing for today at 10:45 a.m. to consider a redistricting plan or plans that have been submitted by members of the public or the County's Redistricting Task Force. The following report provides an overview of the statutes that govern redistricting, a brief summary of the County's redistricting process to date, and maps and narratives of the plans that have been submitted for consideration at today's Public Hearing.

Legal Requirements in Brief

Redistricting is governed by the California Elections Code and the United States Voting Rights Act. The Board of Supervisors is charged with the legal responsibility for adjusting supervisorial district boundaries every ten years utilizing census data from the federal government "so that the districts shall be as nearly equal in population as may be" (Elections Code Section 21500). In addition, districts shall comply with the Voting Rights Act of 1965, Section 1973 of Title 42 of the US Code, as amended. Staff review of cases and articles on this issue indicates that race is to be given consideration in the redistricting process so as to assure that sufficiently large minority populations in geographically compact areas which have similar communities of interest are kept together without being overly compacted.

The statutes require that in establishing the boundaries of the districts, the Board may give consideration to the factors of (a) topography, (b) geography, (c) cohesiveness, contiguity, integrity, and compactness of territory, and (d) community of interests of the districts (Elections Code Section 21500). The statutory deadline for adjusting the supervisorial boundaries is the first day of November following the year in which the federal census is taken. If the Board of Supervisors fails to adjust the boundaries before the November 1 statutory deadline, a supervisorial redistricting commission composed of the district attorney, as chair, the county assessor, and the county elections official shall do so before December 31st.

In addition to the statutory requirements, our Board also affirmed four principles for 2011 that were also adopted for the 2001 effort:

1. To the extent possible, the current district boundaries will be preserved.
2. The public will have all the opportunities provided by law to participate in the redistricting process and provide input to the Board.
3. Communities of interest will be preserved to the extent possible.
4. Each Supervisor will have the opportunity to suggest changes to his or her district's boundaries to the extent such changes are necessary prior to the public hearings to be held on the redistricting plan.

The Elections Code prescribes that the Board shall hold at least one public hearing on any proposal to adjust the boundaries of a district, prior to a public hearing at which the Board of Supervisors votes to approve or defeat the proposal (Section 21500.1). This public hearing is a hearing for which your Board will take no action to approve or defeat any proposal.

Redistricting Process to Date

A Task Force was established by my office, comprised of one representative from each Supervisorial District, along with County Counsel, the County Clerk, the Information Services Director and GIS staff, and CAO staff, and it has been meeting since late April to review maps of existing District boundaries, various databases from the US Census Bureau that include the number of persons in each District by Census Block, race, ethnicity, and population over the age of 18, as well as election information for various contests Board members considered would be helpful in reviewing communities of interest. All of these were taken under consideration in order to develop a plan to adjust the Supervisorial boundaries to be "as nearly equal in population as may be."

According to the 2010 Census data, the County has a population of 262,382, which when divided equally by the five Supervisorial Districts yields a target population of approximately 52,476 persons. Task Force members used redistricting software that summarized the databases by Census Block. Two kiosks with redistricting software with the same databases were made available for public use at the County Clerk and Watsonville City Clerk's offices.

As directed by your Board, public meetings were convened on June 14th in Santa Cruz and June 20th in Watsonville to encourage input by members of the public. The public meetings were advertised in local newspapers, by press releases, and on the County's website. The County's website also included a Redistricting section, with easy-to-use tools for the public to describe and map their communities of interest (COI).

As you may recall, California law states that a community of interest is "a contiguous population which shares common social and economic interests that should be included within a single district for purposes of its effective and fair representation." While the law provides several examples of the kinds of interests that satisfy its definition, such as common media, or transportation facilities, the input was not limited to these kinds of interests in establishing a COI. Common social and/or economic interests could also include common heritage, culture or history, support for a school or community center, or the desire to address a problem specific to a neighborhood or area.

As your Board will recall, there was no public testimony at the first meeting, and at the second, several people expressed their views on redistricting in South County. A number of members of the Redistricting Task Force attended the public meetings, and these comments were considered by the Task Force at subsequent meetings.

Proposed Redistricting Plans – Redistricting Task Force

As a result of the work of the Redistricting Task Force, two plans are being forwarded for your Board's consideration. The District boundaries are proposed to be adjusted in order to meet the "as equal as may be" requirement, and the cascading effects of one District's boundary change on another. As your Board will recall, the Fourth District, which is the most southerly District, had excess population, which when addressed, impacted each District to the north in a cascading fashion. In addition to the considerations provided by statute and your Board's principles, the Task Force also attempted to address several issues that the County Clerk identified that would assist in establishing voting precincts, managing ballot types, and making the administration of elections more efficient and less costly.

The two plans propose the same boundaries for the First, Second and Fourth Districts, but differ in their treatment of the proposed boundary for the Third and Fifth Districts. The following provides a narrative description of the plans, which for the purposes of this report have been titled Plans 1 and 2.

Plan 1

Plan 1 confirms Green Valley Road as the boundary between the Second and Fourth Districts, and moves the population in the Census Blocks that are northwest of Green Valley Road and presently in the Fourth District, to the Second. A table representing population characteristics for District 4 with this proposed change follows:

District	Population	Hispanic	% Hispanic	Non-Hispanic	% Non-Hispanic	Pop Over 18	% Over 18	Hispanic Over 18	% Hisp. Over 18
Fourth	52,186	41,086	79%	11,100	21%	35,936	69%	26,615	74%

Plan 1 establishes new boundaries on the west side of the Second District along the riparian corridor adjacent to Park Avenue, past Soquel Drive to the Capitola City Limits at Cabrillo College Drive, and moves the population between the west side of Park Avenue and the existing District boundaries from the Second to the First District. Plan 1 also establishes new boundaries between the Second and First District in the "Jewel Box" area of Capitola, by continuing the boundary along Soquel Creek, south along the Creek to Capitola Road, west on Capitola Road to 45th Avenue, thence along 45th Avenue to Jade Street, to the existing boundary at 41st Avenue. The population in the Census Blocks west of that boundary and the existing District boundary would be moved from the Second to the First District. A table representing population characteristics for the Second District with these proposed changes follows:

District	Population	Hispanic	% Hispanic	Non-Hispanic	% Non-Hispanic	Pop Over 18	% Over 18	Hispanic Over 18	% Hisp. Over 18
Second	53,879	17,019	32%	36,860	68%	41,878	78%	11,200	27%

Plan 1 establishes a new boundary between the First and Third Districts by utilizing the Santa Cruz City Limits as the new First District boundary in the area above the Brommer Street Extension and below Route 1. This action moves the population in the Census Blocks contained in this area from the Third District to the First District.

Plan 1 establishes a new boundary between the First and Fifth Districts by returning to Highway 17 as the boundary between the First and Fifth Districts between the County line to the north and the Santa Cruz City Limits to the south, as it was prior to the changes that were made after the 1990 Census. The population in the Census Blocks east of Highway 17 in the current Supervisorial District map is moved from District Five to District One, and the population in those Census Blocks west of Highway 17 in the current map is moved from the First District to the Fifth. A table representing the population characteristics for the First District with these proposed changes follows:

District	Population	Hispanic	% Hispanic	Non-Hispanic	% Non-Hispanic	Pop Over 18	% Over 18	Hispanic Over 18	% Hisp. Over 18
First	53,144	10,571	20%	42,573	80%	42,706	80%	7,149	17%

Plan 1 also establishes a new boundary between the Third and Fifth Districts at the University of California, Santa Cruz (UCSC) campus by continuing the existing boundary west along McLaughlin Road to Hagar Drive, then south to the intersection of Cowell Service Road and easterly to the existing boundary, and moves the population in the Census Blocks between Hagar Drive and the existing boundary from the Third to the Fifth District. A table representing

the population characteristics for Districts Three and Five with the proposed changes at the UCSC campus and by establishing Highway 17 as the boundary between the Fifth and the First Districts follows:

District	Population	Hispanic	% Hispanic	Non-Hispanic	% Non-Hispanic	Pop Over 18	% Over 18	Hispanic Over 18	% Hisp. Over 18
Third	52,627	9,796	19%	42,831	81%	45,549	87%	7,560	17%
Fifth	50,546	5,620	11%	44,926	89%	40,895	81%	3,984	10%

Plan 2

Plan 2 differs only in the treatment of the boundary between Districts Three and Five at the UCSC campus. This plan establishes the boundary between the two districts as Coolidge Drive and moves the population in the undergraduate student housing in the Census Blocks contained in this area from District Five to District Three. A table representing the population characteristics for the Third and Fifth Districts in Plan 2 follows:

District	Population	Hispanic	% Hispanic	Non-Hispanic	% Non-Hispanic	Pop Over 18	% Over 18	Hispanic Over 18	% Hisp. Over 18
Third	53,943	10,018	19%	43,925	81%	46,860	87%	7,780	17%
Fifth	49,230	5,398	11%	43,832	89%	39,584	80%	3,764	10%

In addition to the Redistricting Task Force, County Counsel has reviewed the population deviations from the target population proposed and believes that both Plan 1 and Plan 2 are responsive to mandates contained in the Elections Code. As previously described, the primary goal of redistricting is to get the population in each of the five districts to be as close to 20% of the total county population as practicable, taking into account the statutorily recognized secondary considerations of topography, geography, cohesiveness, contiguity, integrity, compactness, and communities of interest. The California Supreme Court stated that in order for a reapportionment of the supervisorial districts in Santa Clara County – which also has Five Districts – to be entitled to a presumption of validity, the Court concluded that no district shall have more than 23% nor less than 17% of the overall population of the county, a range that the proposed plans are well within. (*Miller v Board of Supervisors of Santa Clara County*, 1965, 63 Cal. 2d. 343,350; see also *Wiltsie v. Board of Supervisors*, 1966, 65 Cal. 2d. 314, 317).

The Plans are also consistent with the Voting Rights Act, specifically Section 2, which prohibits minority vote dilution that weakens the voting strength of minorities or prevents minorities from a fair chance to elect candidates of their choice. County Counsel has determined that the proposed boundaries respect the representation of communities of interest. Of note, the Plans provide that all of the four cities in Santa Cruz County are represented by two Supervisors.

In addition to Plans 1 and 2, the Task Force and staff have received a proposal from a member of the public to revise the Supervisorial boundaries in the Second and Fourth Districts. A copy of that plan and our staff review is provided in the attachments that follow.

Maps and population summary reports demonstrating the shifts of Census Blocks and population for Plans 1 and 2 are also attached, and the maps and population summary reports have been placed on the County's website and on file with the Clerk of the Board.

Direction to Staff

Your Board directed that the Redistricting effort be conducted in a way that would provide each Supervisor and the public with the opportunity to suggest changes to Supervisorial District boundaries.

At this point, staff seeks public input and your review and comment on the proposed plans. The timeline discussed in the staff report on your Board's May 24, 2011 agenda established a target date of Tuesday, September 13th as the first of two public hearings to adopt a plan and for the first reading of the ordinance, and Tuesday, September 20th as the date for the second reading of the ordinance. This timeline allows for additional public hearings on October 4th or October 25th, if necessary. It is therefore **RECOMMENDED** that your Board take the following actions:

1. Accept and file this report on the Redistricting of Supervisorial boundaries;
2. Consider the proposed plans submitted;
3. Provide any direction as may be appropriate; and
4. Open today's Public Hearing and a period for public comment that would culminate in a first Public Hearing on September 13, 2011 and a second Public Hearing on September 20, 2011.

Very truly yours,



SUSAN A. MAURIELLO
County Administrative Officer

SAM/sp/h:/wp/redistricting 2010/pub hearing 8 23 11

Attachments

Copy to: Redistricting Task Force
County Clerk
County Counsel
Information Services Director
GIS Manager
Each City Clerk

POPULATION DATA

PLAN 1 AND PLAN 2

Attachment: Population Data and Maps 1-6 with Detail

Census 2000 Baseline Data - Existing Boundaries

	Population	Hispanic	% Hispanic	Non-Hispanic	% Non-Hispanic	18+	%18+	H18+	%H18+
District 1	49,049	9,441	19%	39,608	81%	39,572	81%	6,394	16%
District 2	50,173	12,022	24%	38,151	76%	39,785	79%	7,969	20%
District 3	54,427	10,200	19%	44,227	81%	47,157	87%	7,876	17%
District 4	58,954	46,948	80%	12,006	20%	40,509	69%	30,415	75%
District 5	49,779	5,481	11%	44,298	89%	39,941	80%	3,854	10%

Census 2010 Population Data - Plan 1

	Population	% of Total	Hispanic	% Hispanic	Non-Hispanic	% Non-Hispanic	18+	%18+	H18+	%H18+
District 1	53,144	20%	10,571	20%	42,573	80%	42,706	80%	7,149	17%
District 2	53,879	21%	17,019	32%	36,860	68%	41,878	78%	11,200	27%
District 3	52,627	20%	9,796	19%	42,831	81%	45,549	87%	7,560	17%
District 4	52,186	20%	41,086	79%	11,100	21%	35,936	69%	26,615	74%
District 5	50,546	19%	5,620	11%	44,926	89%	40,895	81%	3,984	10%

Census 2010 Population Data - Plan 2

	Population	% of Total	Hispanic	% Hispanic	Non-Hispanic	% Non-Hispanic	18+	%18+	H18+	%H18+
District 1	53,144	20%	10,571	20%	42,573	80%	42,706	80%	7,149	17%
District 2	53,879	21%	17,019	32%	36,860	68%	41,878	78%	11,200	27%
District 3	53,943	21%	10,018	19%	43,925	81%	46,860	87%	7,780	17%
District 4	52,186	20%	41,086	79%	11,100	21%	35,936	69%	26,615	74%
District 5	49,230	19%	5,398	11%	43,832	89%	39,584	80%	3,764	10%

2010 Total Population 262,382

Target Population 52,476

H = Hispanic Population

MAP 1

SECOND AND FOURTH DISTRICT BOUNDARIES

District 2

Area moved from 4th
to 2nd District.
Population = 6,768

District 4

**City of
Watsonville**

Plan 1 - Green Valley Rd

Proposed change to Boundary of Supervisorial Districts 2 and 4

-  Proposed Supervisorial District 2
-  Proposed Supervisorial District 4
-  Existing County Supervisorial Districts

Area Being Transferred

 City Limits



MAP 2

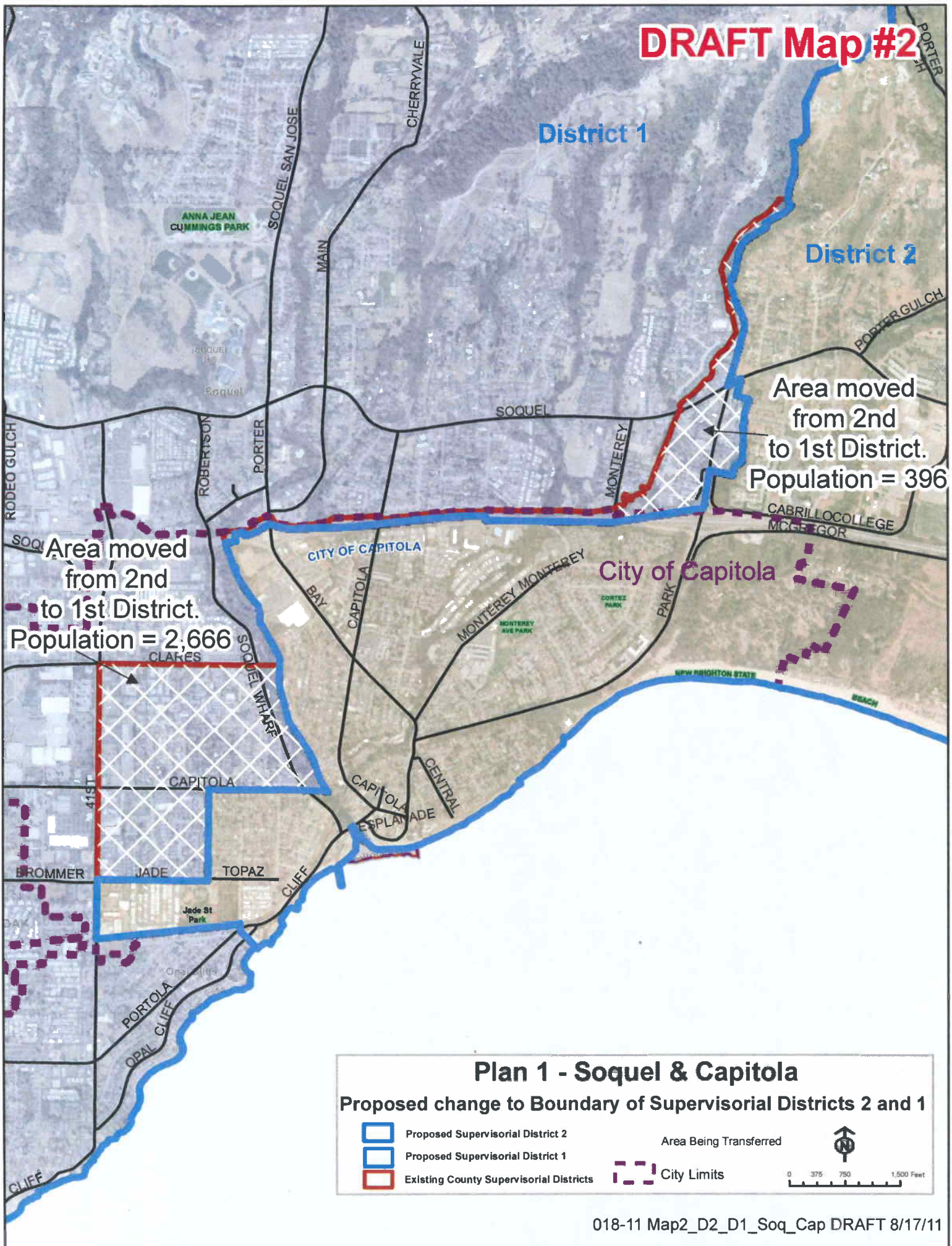
FIRST AND SECOND DISTRICT BOUNDARIES

Map 2 – Overview

Map 2A – Capitola Detail

Map 2B – Soquel Detail

DRAFT Map #2



DRAFT Map#2-A

Area moved
from 2nd
to 1st District.
Population 2,666

District 1

District 2

City of Capitola

Jade St
Park

Plan 1 - Capitola Detail

Proposed change to Boundary of Supervisorial Districts 2 and 1



Proposed Supervisorial District 2

Proposed Supervisorial District 1

Existing County Supervisorial Districts

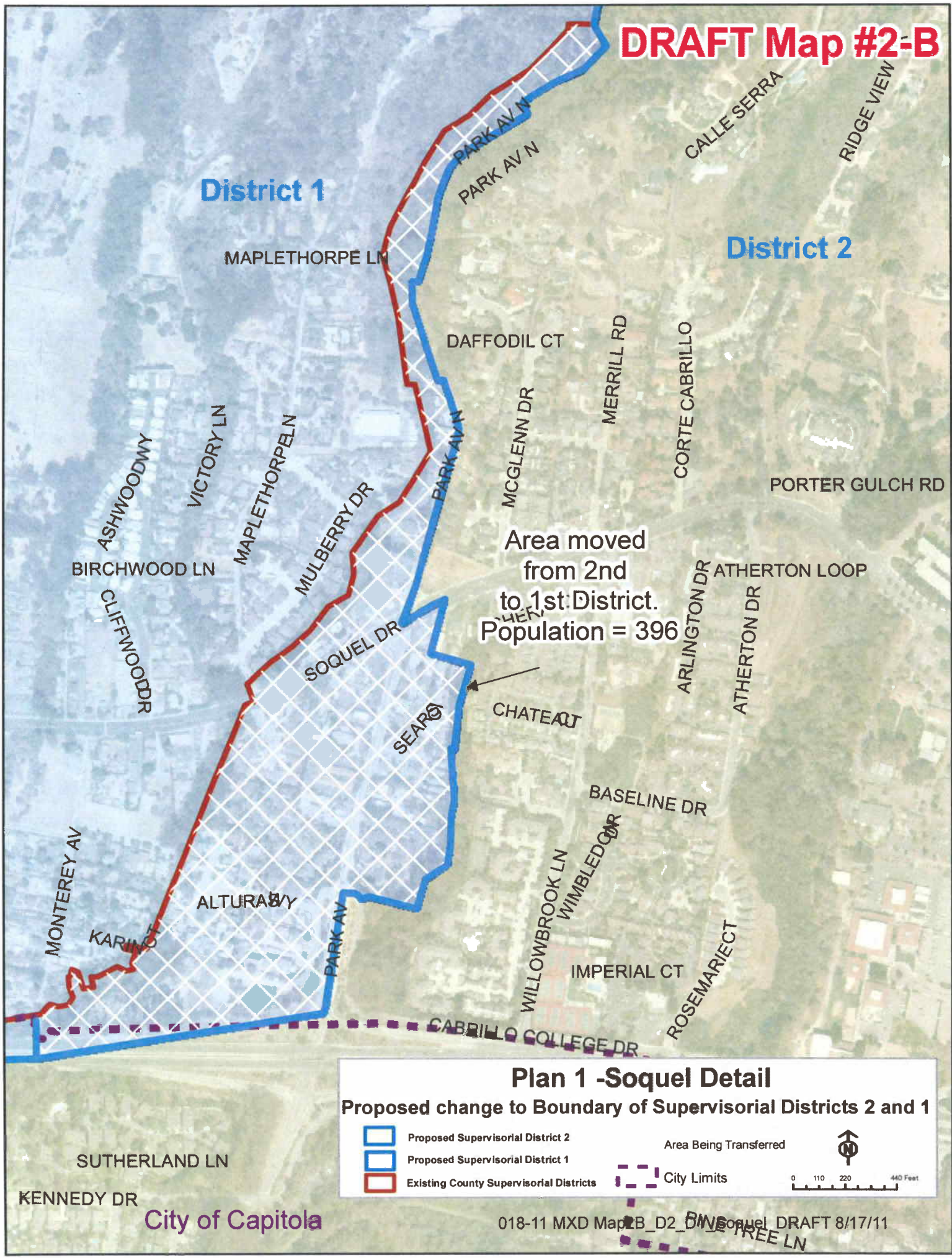
Area Being Transferred

City Limits



0 110 220 440 Feet

DRAFT Map #2-B



Plan 1 -Soquel Detail

Proposed change to Boundary of Supervisorial Districts 2 and 1

- Proposed Supervisorial District 2
- Proposed Supervisorial District 1
- Existing County Supervisorial Districts
- City Limits
- Area Being Transferred



MAP 3

FIRST AND THIRD DISTRICT BOUNDARIES

DRAFT Map #3

District 3

District 1

Arana Gulch

Area moved
from 3rd
to 1st District.
Population = 879

City of Santa Cruz

Plan 1 - 7th Ave

Proposed change to Boundary of Supervisorial Districts 3 and 1

-  Proposed Supervisorial District 3
-  Proposed Supervisorial District 1
-  Existing County Supervisorial Districts

Area Being Transferred

 City Limits



0 200 400 600 Feet

MAP 4

FIRST AND FIFTH DISTRICT BOUNDARIES

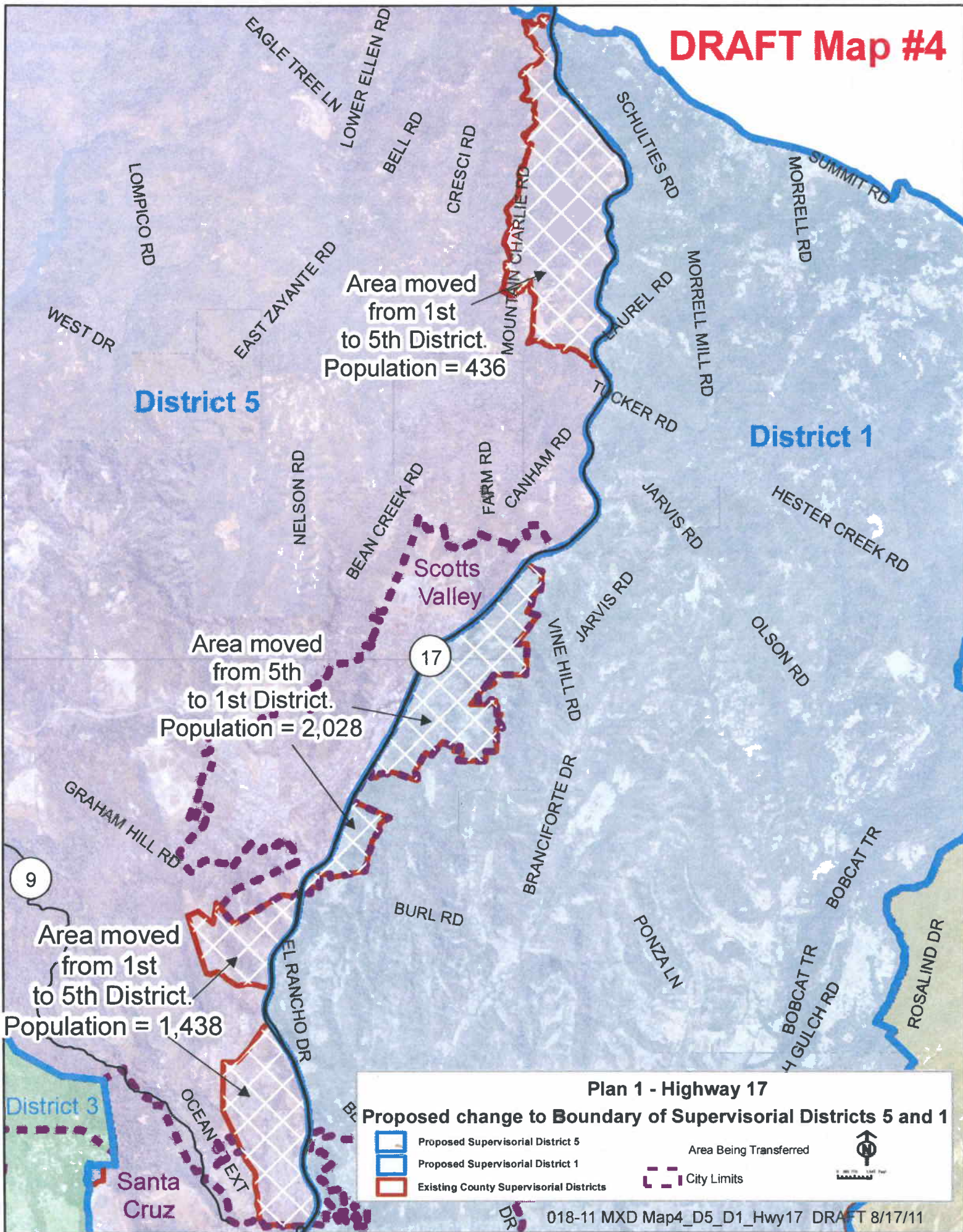
Map 4 – Overview

Map 4A – Mountain Charley Area Detail

Map 4B – Scotts Valley Detail

Map 4C – El Rancho Detail

DRAFT Map #4



Area moved
from 1st
to 5th District.
Population = 436

District 5

District 1

Scotts
Valley

Area moved
from 5th
to 1st District.
Population = 2,028

Area moved
from 1st
to 5th District.
Population = 1,438

Plan 1 - Highway 17

Proposed change to Boundary of Supervisorial Districts 5 and 1

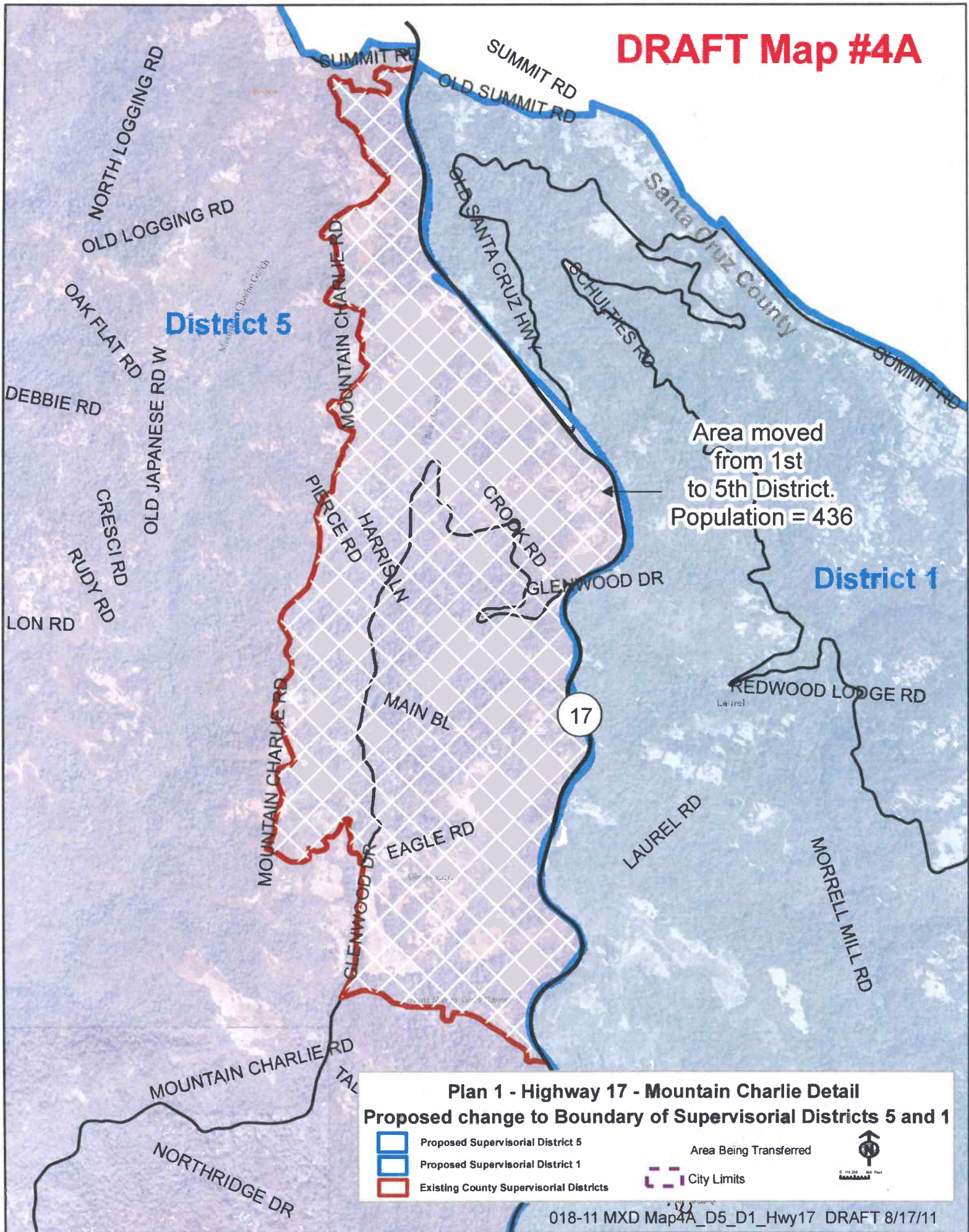
- Proposed Supervisorial District 5
- Proposed Supervisorial District 1
- Existing County Supervisorial Districts

Area Being Transferred

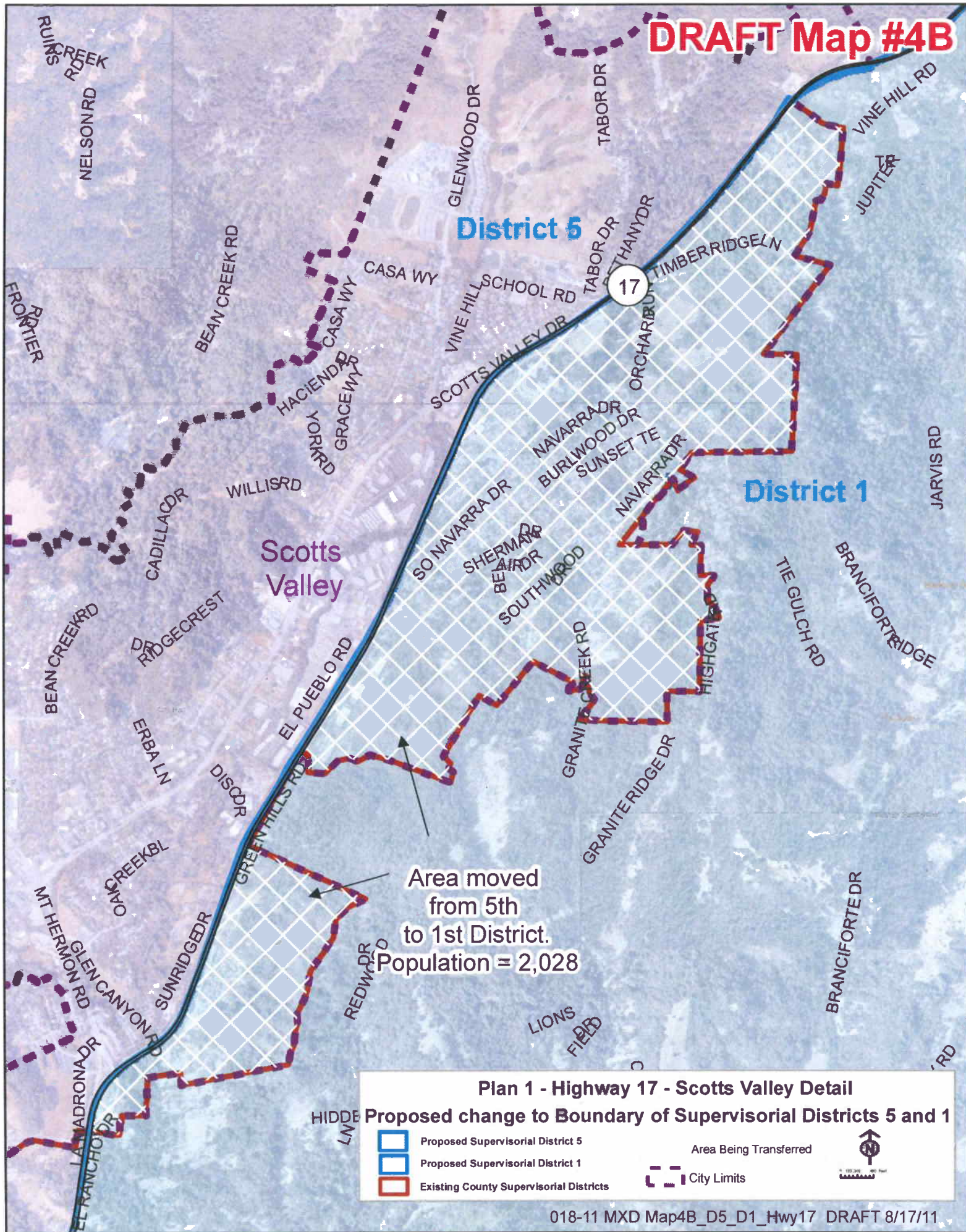
City Limits



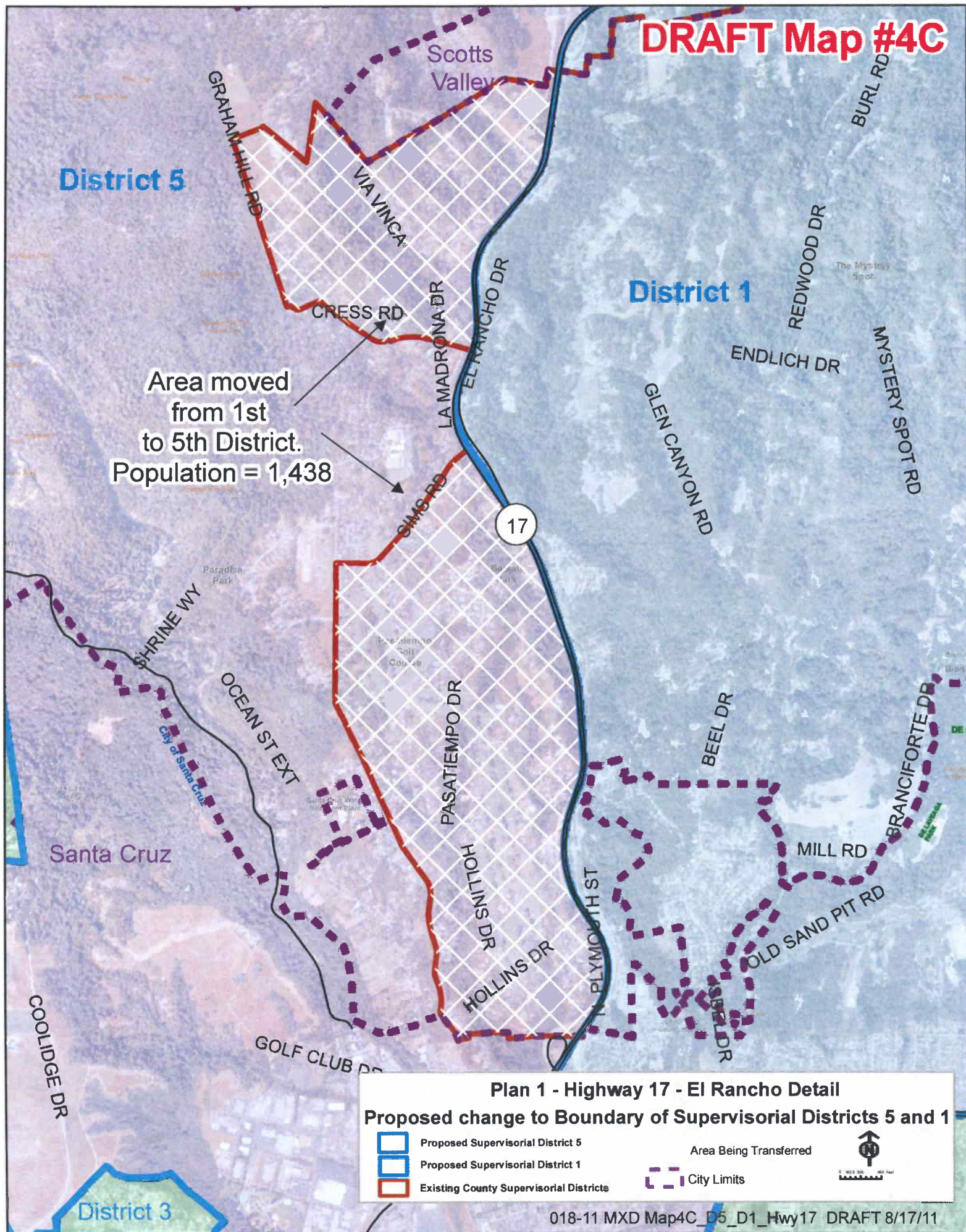
DRAFT Map #4A



DRAFT Map #4B



DRAFT Map #4C

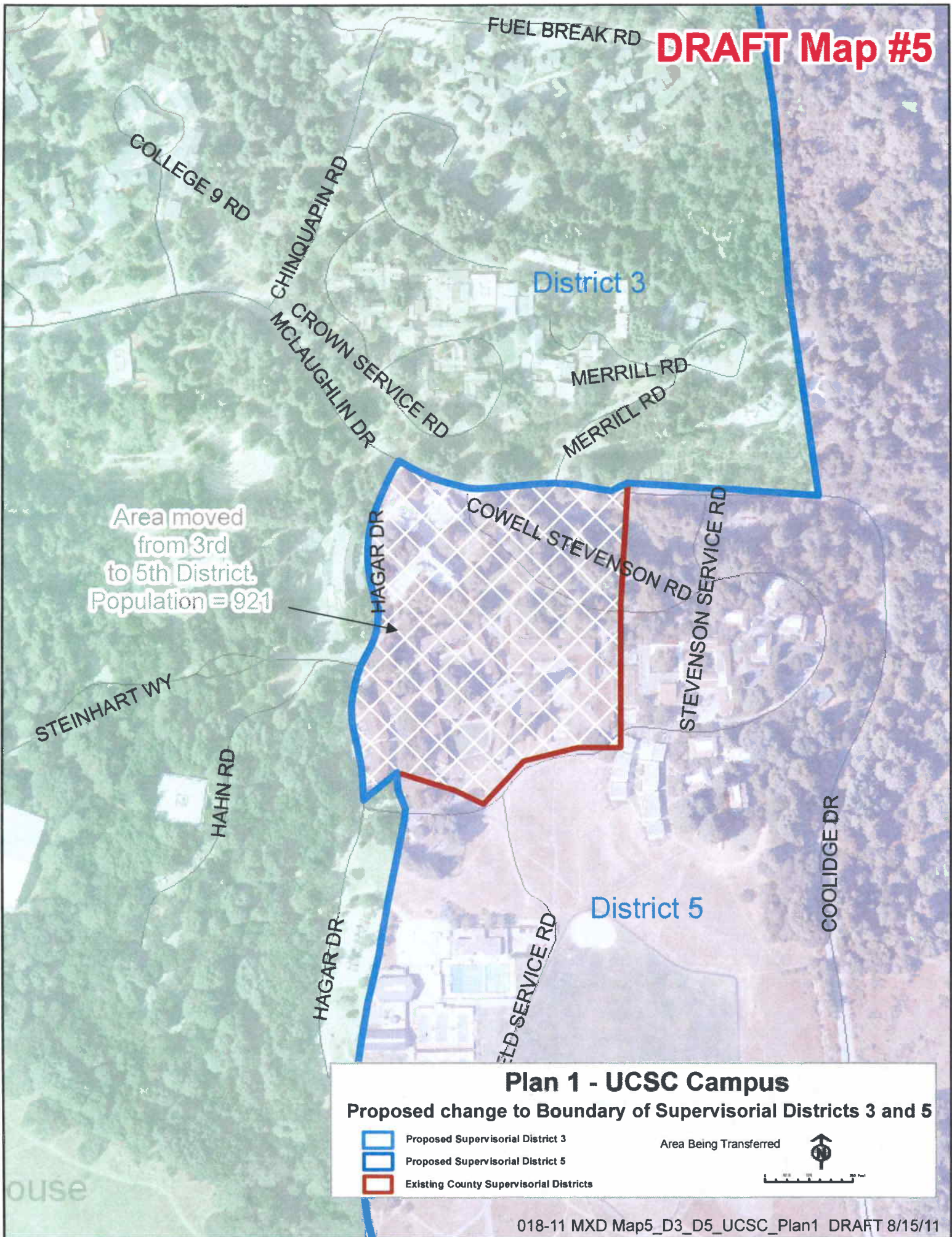


MAP 5

THIRD AND FIFTH DISTRICT BOUNDARIES

UCSC Plan 1

DRAFT Map #5

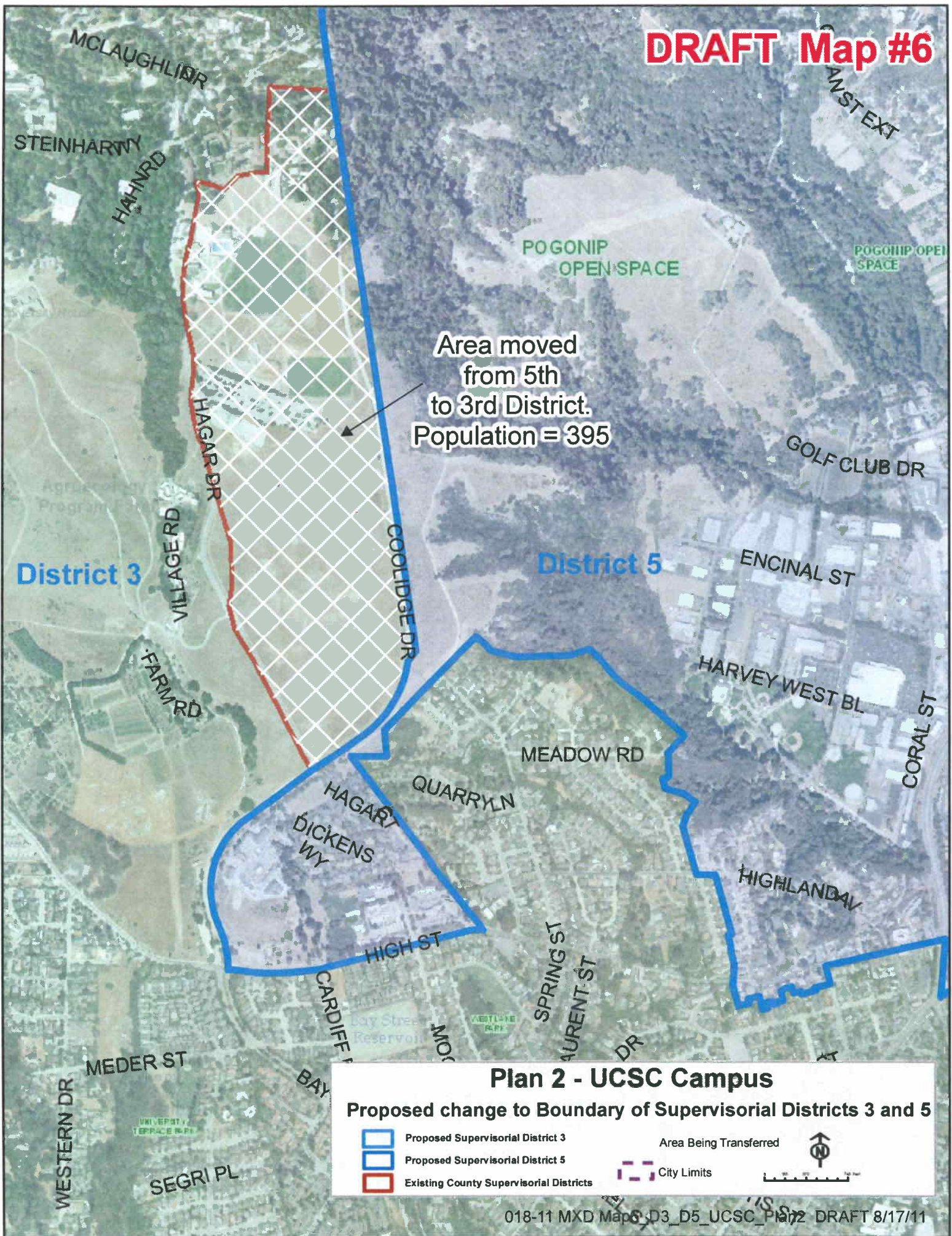


MAP 6

THIRD AND FIFTH DISTRICT BOUNDARIES

UCSC Plan 2

DRAFT Map #6



LETTER, STAFF REVIEW, POPULATION
DATA AND MAP
SECOND AND FOURTH DISTRICT BOUNDARIES

Submitted by D. Dodge

August 8, 2011

2011 AUG 15 AM 10:54

Santa Cruz County Redistricting Task Force
County of Santa Cruz
701 Ocean Street, Rm. 520
Santa Cruz, CA 95060

Members of the Redistricting Task Force:

I would like to submit a redistricting plan that would keep the City of Watsonville in one Supervisorial District. I believe that the City should remain whole as it is important for us to speak with one voice.

- Splitting the City of Watsonville into two supervisorial districts will dilute the voice and influence of the Watsonville community.
- The City of Watsonville is an important community of interest that should remain whole as it represents the residential and commercial center of the Pajaro Valley.
- The City of Watsonville has many unique urban issues and needs that will best be addressed if the City of Watsonville is kept whole in one Supervisorial District with the full attention of one County Supervisor.
- Splitting the City of Watsonville into two supervisorial districts may reduce the percentage of voting age Latinos in the 4th Supervisorial District.

I am submitting this plan as an individual. It does not necessarily reflect the opinions of the boards, commissions or agencies that I am affiliated with. Thank you for your consideration.

Sincerely,


Daniel Dodge.

c: County Board of Supervisors
Susan Pearlman

Proposed Plan for the Fourth District – Member of the Public : Staff Summary

Daniel Dodge, a resident of the City of Watsonville and current Mayor, has submitted a plan for the Fourth District as a private citizen. For the purposes of this report, this plan has been titled Plan 3. It does not propose a county-wide solution; rather it addresses the Second and Fourth District boundaries only. Plan 3 proposes to include the Watsonville City Limits entirely in District Four, and therefore moves the population of the Census Blocks in the City Limits that are currently in the Second District to the Fourth District. In addition, it proposes to create a new boundary that would run along Holohan Road to Census Block boundaries and parcel lines west of College Lake in a northerly direction to Casserly Road, to a point where Casserly intersects with Mt. Madonna Road, then along the existing District boundary at Hazel Dell Road, where it meets Green Valley Road. The population in the Census Blocks in the area created by this new boundary would be moved from the Fourth District to the Second District. A table representing the population characteristics for the Fourth and Second District in Plan 3 follows.

District	Population	Hispanic	% Hispanic	Non-Hispanic	% Non-Hispanic	Pop Over 18	% Over 18	Hispanic Over 18	% Hisp. Over 18
Second	52,988	13,966	26%	39,022	74%	39,022	74%	9,235	24%
Fourth	56,139	45,004	80%	11,135	20%	38,552	51%	29,149	76%

The Redistricting Task Force and staff have reviewed this proposal, and it is not included in the recommended Redistricting Plans to your Board.

Attachment: Population Data and Map 7

Census 2010 Population Data - Plan 3

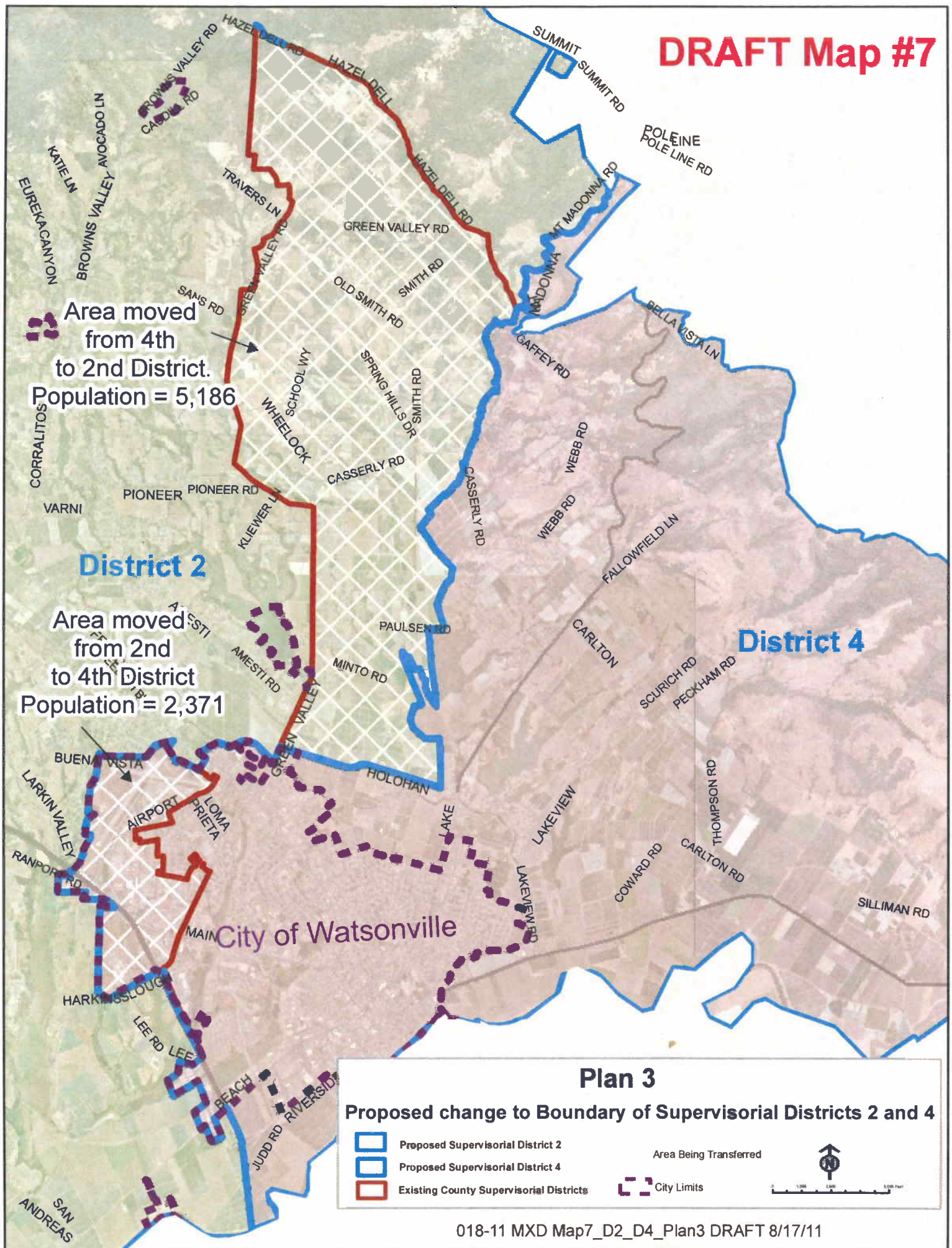
	Population	% of Total	Hispanic	% Hispanic	Non-Hispanic	% Non-Hispanic	18+	%18+	H18+	%H18+
District 2	52,988	20%	13,966	26%	39,022	74%	39,022	74%	9,235	24%
District 4	56,139	21%	45,004	80%	11,135	20%	38,552	69%	29,149	76%

2010 Total Population 262,382

Target Population 52,476

H = Hispanic Population

DRAFT Map #7



PROPOSALS SUBMITTED BY THE SCOTTS VALLEY CITY COUNCIL

Staff Report from Scotts Valley City Attorney
Executed Resolution
Maps and Tables

City of Scotts Valley
INTEROFFICE MEMORANDUM

DATE: September 7, 2011

TO: Honorable Mayor and City Council

FROM: Kirsten Powell, City Attorney

SUBJECT: **Consideration of Alternatives to the Proposed Redistricting Plan for Santa Cruz County Supervisorial Districts**

SUMMARY OF ISSUE

Pursuant to state law, Santa Cruz County ("County") is required to adjust, or redistrict, supervisorial district boundaries every ten years following the U.S. Census. The U.S. Census was completed in 2010 and the County is currently working on the new boundaries. The County had committed to preserving the current boundaries to the extent possible and preserving communities of interest to the extent possible. However, at its August 23, 2011, meeting, the County unveiled its proposal, which proposes to move the Granite Creek and Green Hills neighborhoods from Supervisorial District Five to Supervisorial District One, thereby dividing a community of interest.

When creating new boundaries several factors must be considered. The new boundaries must be drawn to balance the population, while taking into account the guidelines provided in the State Elections Code and the Federal Voting Rights Act. The Board may also give consideration to the following factors: (a) topography, (b) geography, (c) cohesiveness, contiguity, integrity, and compactness of territory, and (d) community of interests of the districts. The County's proposal does not comply with these factors.

The current redistricting plan results in dividing a community of interest by disenfranchising the Granite Creek and Green Hills neighborhoods of Scotts Valley. This proposal would isolate those neighborhoods that are an integral part of the community. The children of those neighborhoods attend Scotts Valley schools, recreate at Scotts Valley parks, visit the Scotts Valley library and participate in the Scotts Valley recreational programs. Those neighborhoods are served by the Scotts Valley Police Department, Scotts Valley Water District and the Scotts Valley Fire District.

In 1991, when considering the supervisorial boundaries at that time, the County Board of Supervisors determined it was appropriate for all of Scotts Valley to be located in one supervisorial district, and adjusted the District Five boundary to include these neighborhoods. Copies of letters from Mayor Joe Miller and Chamber President Henry Reilly, which were sent to the County at that time, are attached to this report. The circumstances that existed in 1991 still exist today and do not justify dividing a community.

The City is proposing two (2) scenarios which would meet the requirements of State and Federal law and maintain current communities of interest.

FISCAL IMPACT

None.

STAFF RECOMMENDATION

Consider the alternatives proposed for District Five and approve the Resolution of the City Council of the City of Scotts Valley Proposing a Revised Redistricting Plan to the Santa Cruz County Board of Supervisors

TABLE OF CONTENTS

	<u>PAGE</u>
Resolution No. 1871.....	4
Correspondences from Joe Miller and Henry Reilly.....	10



CITY OF SCOTTS VALLEY

ONE CIVIC CENTER DRIVE • SCOTTS VALLEY, CALIFORNIA 95066 • (408) 438-2324

August 8, 1991

Fred Keeley, Chair
Santa Cruz County
Board of Supervisors
701 Ocean Street
Santa Cruz, CA 95060

SUBJECT: Redistricting

Dear Chairperson Keeley:

The City of Scotts Valley has been admirably served by both yourself and Supervisor Beautz. With Scotts Valley's current growth projections and its related problems, there will be a continual need for County assistance and cooperation. A single Supervisor for Scotts Valley will be most effective in solving future issues.

We urge you to consider, during your redistricting process, that supervisorial districts be drawn so that Scotts Valley has one Supervisor, which will guarantee one solid vote on the Board.

This request is being made on behalf the Scotts Valley City Council, the community at large and the Chamber of Commerce.

Very truly yours,


Joe Miller
Mayor

c: Board of Supervisors,
County of Santa Cruz
Scotts Valley City Council



Fax: 425-3481
August 9, 1991

Fred Keeley, Chair
Board of Supervisors
701 Ocean Street
Santa Cruz, CA 95060

Dear Fred:

Scotts Valley is presently divided between two supervisorial districts, the 1st and 5th. We strongly believe the city would best be served by having one representative on the Board of Supervisors and, therefore, should be in one supervisorial district.

When Santa Cruz County's five supervisor districts are redefined this year, after the 1990 federal census, the Chamber recommends the Board of Supervisors place Scotts Valley in only one district.

Thank you for your consideration.

Sincerely,

SCOTTS VALLEY CHAMBER OF COMMERCE

Henry J. Reilly
Henry J. Reilly
President

cc: Board of Directors

P.O. Box 66928
10 Camp Evans Lane
Scotts Valley, CA 95067
408 438 1010
Fax
408 438 0544

RESOLUTION NO. 1871

**A RESOLUTION OF THE CITY COUNCIL
OF THE CITY OF SCOTTS VALLEY
PROPOSING A REVISED REDISTRICTING PLAN TO
THE SANTA CRUZ COUNTY BOARD OF SUPERVISORS**

WHEREAS, Santa Cruz County ("County") is required to adjust, or redistrict, supervisorial district boundaries every ten years following the U.S. Census; and

WHEREAS, the U.S. Census was completed in 2010 and the County is currently working on the new boundaries; and

WHEREAS, the new boundaries must be drawn to balance the population while taking into account the guidelines provided in the State Elections Code and the Federal Voting Rights Act; and

WHEREAS, in establishing the boundaries of the districts, the County Board of Supervisors ("Board") may give consideration to the following factors: (a) topography, (b) geography, (c) cohesiveness, contiguity, integrity, and compactness of territory, and (d) community of interests of the districts; and

WHEREAS, community of interests could include common media, common transportation, common heritage, culture, or history; support for a school or community center; or desire to address a problem; and

WHEREAS, the current redistricting plan results in dividing a community of interest by disenfranchising the Granite Creek and Green Hills neighborhoods of Scotts Valley (collectively referred to as "Granite Creek") and reassigning it to the First District; and

WHEREAS, such redistricting would isolate Granite Creek; and

WHEREAS, Granite Creek is a part of the community of interest known as Scotts Valley; and

WHEREAS, the children of Granite Creek attend Scotts Valley schools, recreate at Scotts Valley parks, visit the Scotts Valley library and participate in the Scotts Valley recreational programs; and

WHEREAS, Granite Creek is served by the Scotts Valley Police Department, Scotts Valley Water District and the Scotts Valley Fire District;

WHEREAS, in 1991, the County Board of Supervisors determined it was appropriate for all of Scotts Valley to be located in one supervisorial district and adjusted the District Five boundary to include Granite Creek; and

WHEREAS, the circumstances that existed in 1991 still exist today and do not justify dividing a community; and

WHEREAS, the Scotts Valley City Council has prepared two scenarios for redistricting, which would maintain the community of interest in the Scotts Valley area and comply with State and Federal law.

NOW, THEREFORE, BE IT RESOLVED by the City Council of the City of Scotts Valley that it is recommending that the Board approve the redistricting plan 2.5 attached hereto as Exhibit A.

NOW, THEREFORE, BE IT FURTHER RESOLVED by the City Council of the City of Scotts Valley that if the Board does not approve Redistricting Plan 2.5, it is recommending that the Board approve the redistricting plan 2.51 attached hereto as Exhibit B.

THE ABOVE AND FOREGOING RESOLUTION was duly and regularly passed by the City Council of the City of Scotts Valley at a meeting held on the 7th day of September 2011, by the following vote:

AYES: AGUILAR, BUSTICHI, JOHNSON, LIND, REED

NOES: NONE

ABSTAIN: NONE

ABSENT: NONE


Dene Bustichi, Mayor
Tracy Ferrara, City Clerk

[illegible]

Plan: ScottsValley Plan
 Plan Type:
 Administrator:
 User:

Population Summary Report

Tuesday August 30, 2011

10:45 AM

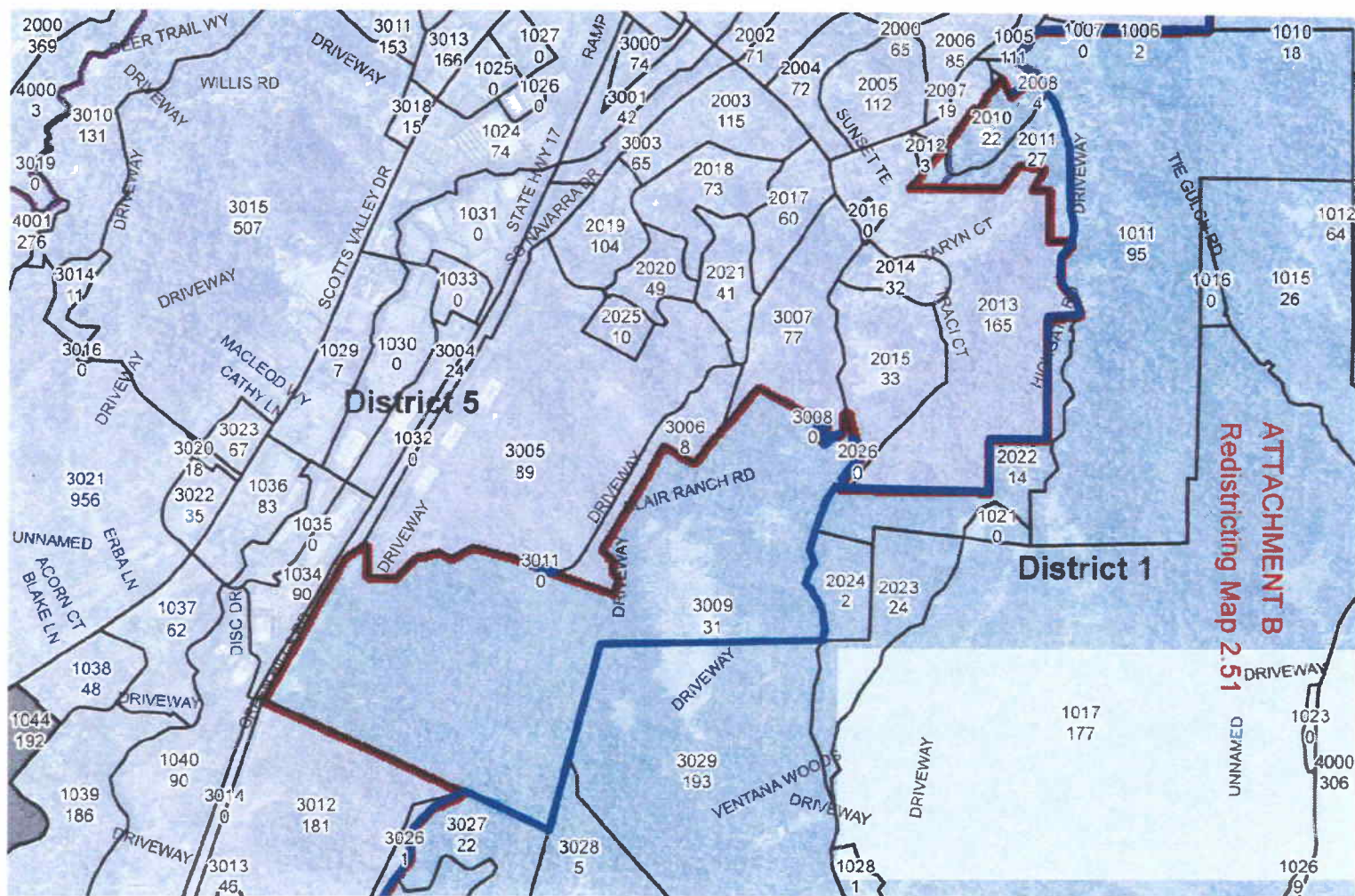
DISTRICT	POPULATION	DEVIATION	% DEVN.	White	Black	AmIndian	Asian	Hawaiian	Other	[Hispanic Origin]	[Not Hispanic]	[18+_Pop]	[H18+_Pop]
District 1	51,116	-1,360	-2.59	40,896	563	416	1,806	77	4,960	10,425	40,691	41,212	7,040
District 2	53,879	1,403	2.67	40,385	460	435	1,886	48	8,371	17,019	36,860	41,878	11,200
District 3	53,943	1,467	2.80	40,673	899	384	4,116	110	4,794	10,018	43,925	46,860	7,780
District 4	52,186	-290	-0.55	23,812	366	684	1,656	36	23,336	41,086	11,100	35,936	26,615
District 5	51,258	-1,218	-2.32	44,442	478	334	1,648	78	1,915	5,544	45,714	41,078	3,873

Total Population: 262,382
 Ideal District Population: 52,476

Summary Statistics

Population Range: 51,116 to 53,943
 Ratio Range: 1.06
 Absolute Range: -1,360 to 1,467
 Absolute Overall Range: 2,827.00
 Relative Range: -2.59% to 2.80%
 Relative Overall Range: 5.39%
 Absolute Mean Deviation: 1,147.60
 Relative Mean Deviation: 2.19%
 Standard Deviation: 1,372.75

ATTACHMENT A
 Redistricting Plan 2.5



2

Plan: ScottsValleyPlan_modified
 Plan Type:
 Administrator:
 User:

Population Summary Report

Tuesday August 30, 2011

11:03 AM

DISTRICT	POPULATION	DEVIATION	% DEVN.	White	Black	AmIndian	Asian	Hawaiian	Other	[Hispanic Origin]	[Not Hispanic]	[18+_Pop]	[H18+_Pop]
District 1	51,036	-1,440	-2.74	40,821	563	416	1,806	77	4,957	10,420	40,616	41,149	7,036
District 2	53,879	1,403	2.67	40,385	460	435	1,886	48	8,371	17,019	35,860	41,878	11,200
District 3	53,943	1,467	2.80	40,673	899	384	4,116	110	4,794	10,018	43,925	46,860	7,780
District 4	52,186	-290	-0.55	23,812	366	684	1,656	36	23,336	41,086	11,100	35,936	26,615
District 5	51,338	-1,138	-2.17	44,517	478	334	1,648	78	1,918	5,549	45,789	41,141	3,877

Total Population 262,382

Ideal District Population 52,476

Summary Statistics

Population Range 51,036 to 53,943

Ratio Range 1.06

Absolute Range -1,440 to 1,467

Absolute Overall Range 2,907.00

Relative Range -2.74% to 2.80%

Relative Overall Range 5.54%

Absolute Mean Deviation 1,147.60

Relative Mean Deviation 2.19%

Standard Deviation 1,375.98

ATTACHMENT B
 Redistricting Map 2.51

SCOTTS VALLEY PROPOSAL COUNTY MAPS

Staff Summary

GIS Maps of Scotts Valley Proposal

Map of Scotts Valley Special Districts Boundaries

Proposed Plan for Scotts Valley: Staff Summary

The City of Scotts Valley is proposing two alternatives for the boundary of the First and Fifth Districts. In the first proposal, illustrated by the map attached to the staff report from the Scotts Valley City attorney and executed resolution adopted by the City Council on Wednesday, September 7, 2011, the City proposes to draw the boundary between the First and Fifth Districts consistent with the Scotts Valley city limits boundary. In the second alternative, also illustrated by a map, the City proposes to include seven additional Census Blocks (some with a population count of 0) to be moved to the Fifth District – Blocks 3008, 3009, 3010, 3011, 2026, and 2010 and 2011, encompassing the Granite Creek and Green Hills areas. The City Council has not suggested other changes to the Task Force Plan, which establishes Highway 17 as the boundary between the First and Fifth Districts north and south of the Scotts Valley city limits.

As your Board may recall, the boundary between the First and Fifth Districts was Highway 17 through the 1980's, and during at least the decade after 1981, Scotts Valley was represented by the First and Fifth District Supervisors. After the 1990 Census, a number of changes to the First and Fifth District boundaries were made, including placing all of Scotts Valley in the Fifth District.

Attached for your information is a map produced by County staff demonstrating the boundaries of various Special Districts, including the Scotts Valley Unified School District, Fire District, and Water District and portions of all of these are currently shared by the First and Fifth Districts. Neither of the City's proposals will change the shared representation.

In addition to consideration of the legal guidelines, the Task Force's Plan includes dual representation by two Supervisors for all four incorporated cities. Members believe that there is a significant advantage to advocacy by two Supervisors, and to enhanced representation for the Cities on boards, agencies, committee, special districts and commissions that members of the Board of Supervisors serve on.

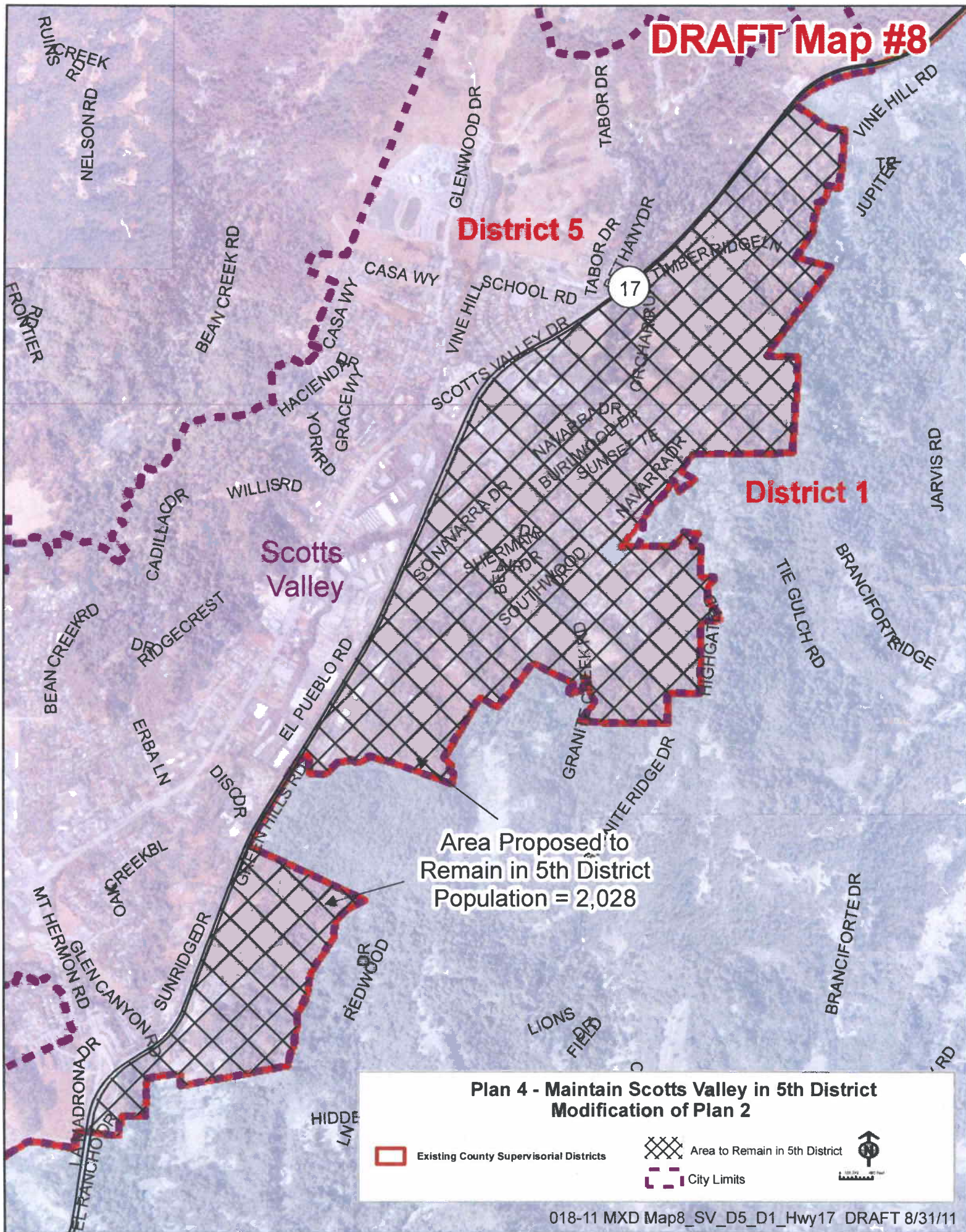
A table representing the population characteristics (the City chose to use Plan 2 for the baseline) for the City's proposals follows:

Proposal 1	Population	% of Total	Hispanic	% Hispanic	Non-Hispanic	% Non-Hispanic	18+	%18+	H18+	%H18+
District 1	51,116	19%	10,425	20%	40,691	80%	41,212	81%	7,040	17%
District 5	51,258	20%	5,544	11%	45,714	89%	41,078	80%	3,873	9%
Proposal 2	Population	% of Total	Hispanic	% Hispanic	Non-Hispanic	% Non-Hispanic	18+	%18+	H18+	%H18+
District 1	51,036	19%	10,420	20%	40,616	80%	41,149	81%	7,036	17%
District 5	51,338	20%	5,549	11%	45,789	89%	41,141	80%	3,877	9%

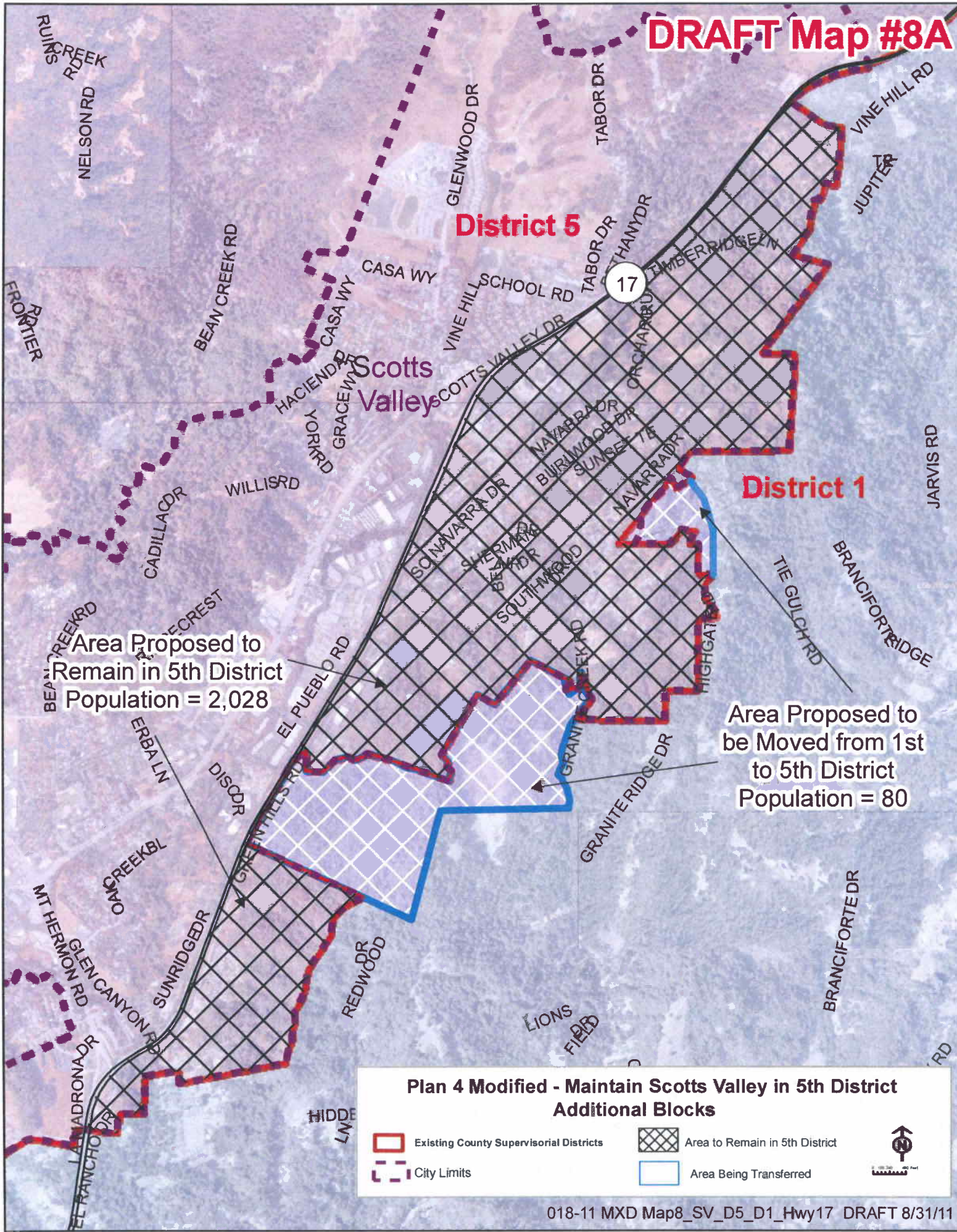
H = Hispanic Population

The Redistricting Task Force members have reviewed and discussed the City's proposals, and have concluded that the Task Force's Plan previously submitted best address the requirements for redistricting.

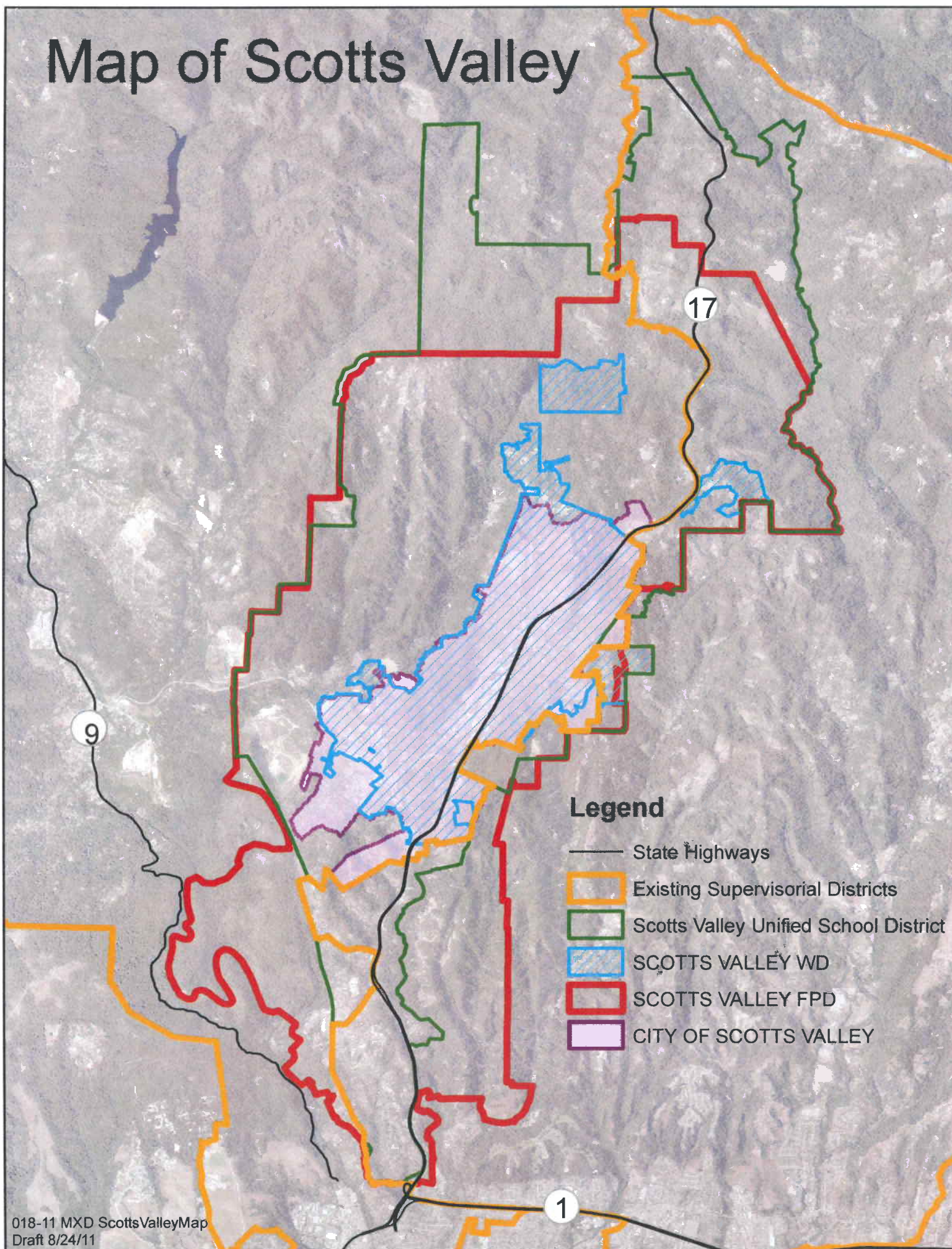
DRAFT Map #8



DRAFT Map #8A



Map of Scotts Valley

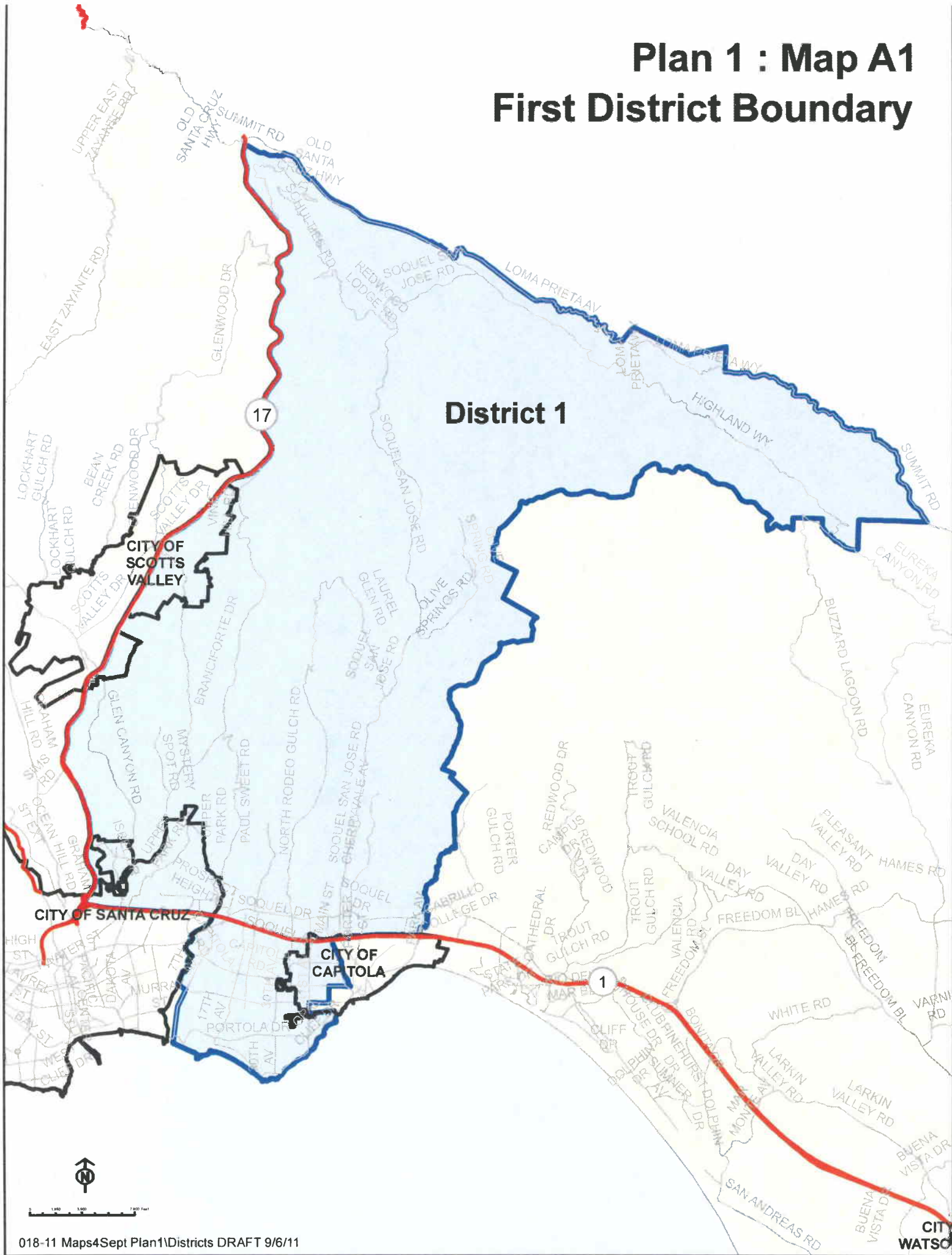


PLAN 1 - MAPS

Map A1 – First District Boundaries
Map A2 – Second District Boundaries
Map A3 – Third District Boundaries
Map A4 – Fourth District Boundaries
Map A5 – Fifth District Boundaries

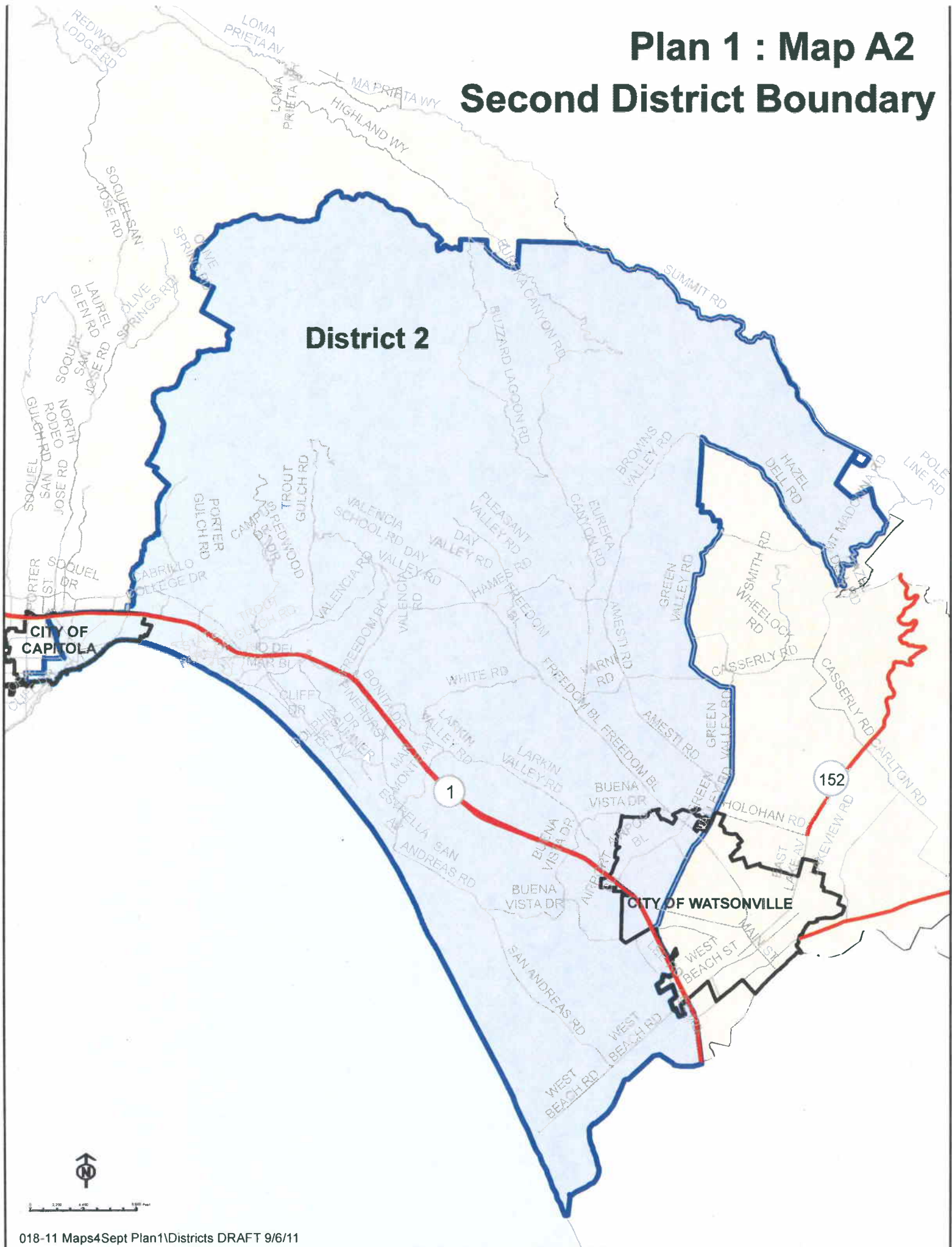
Plan 1 : Map A1

First District Boundary



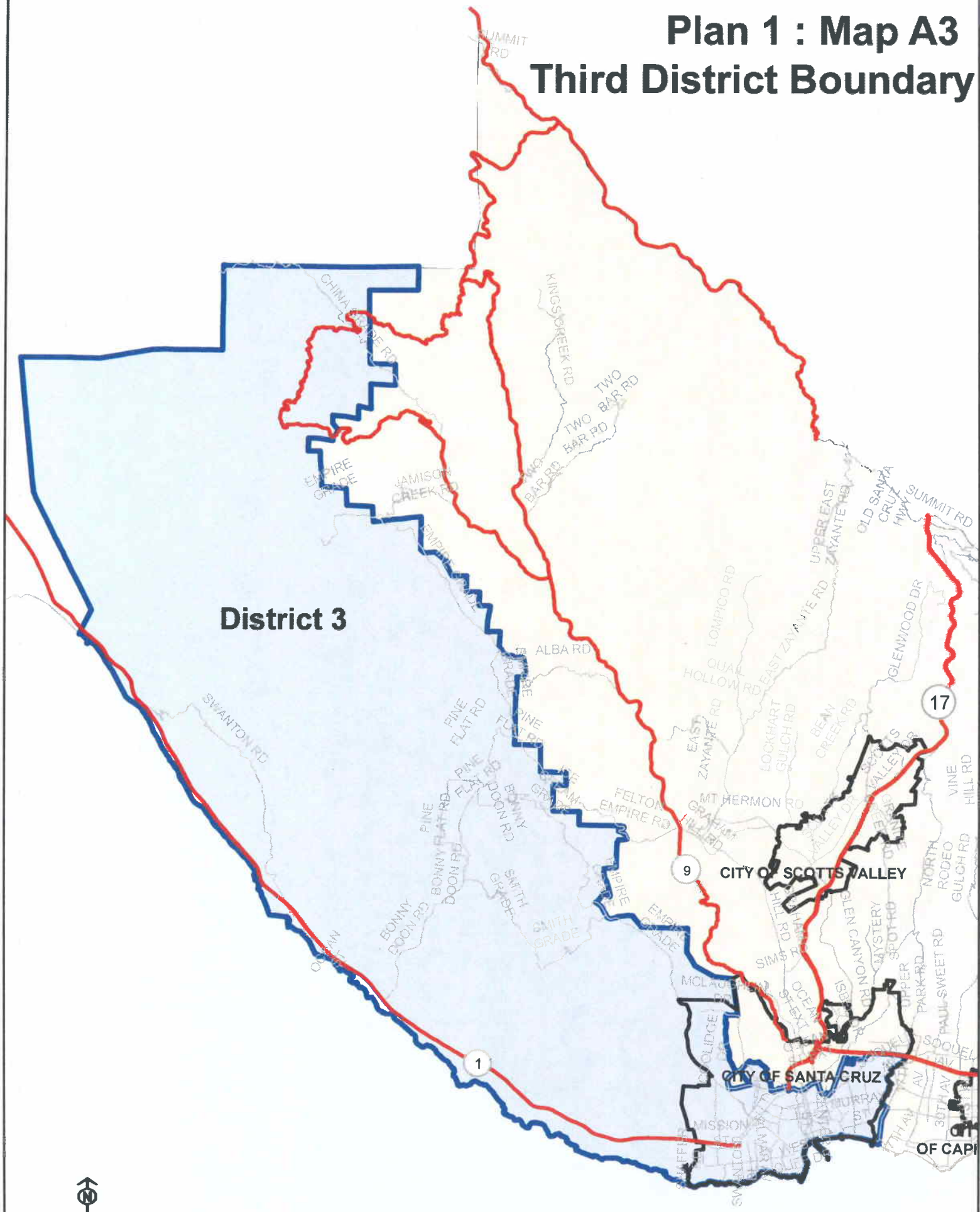
Plan 1 : Map A2

Second District Boundary



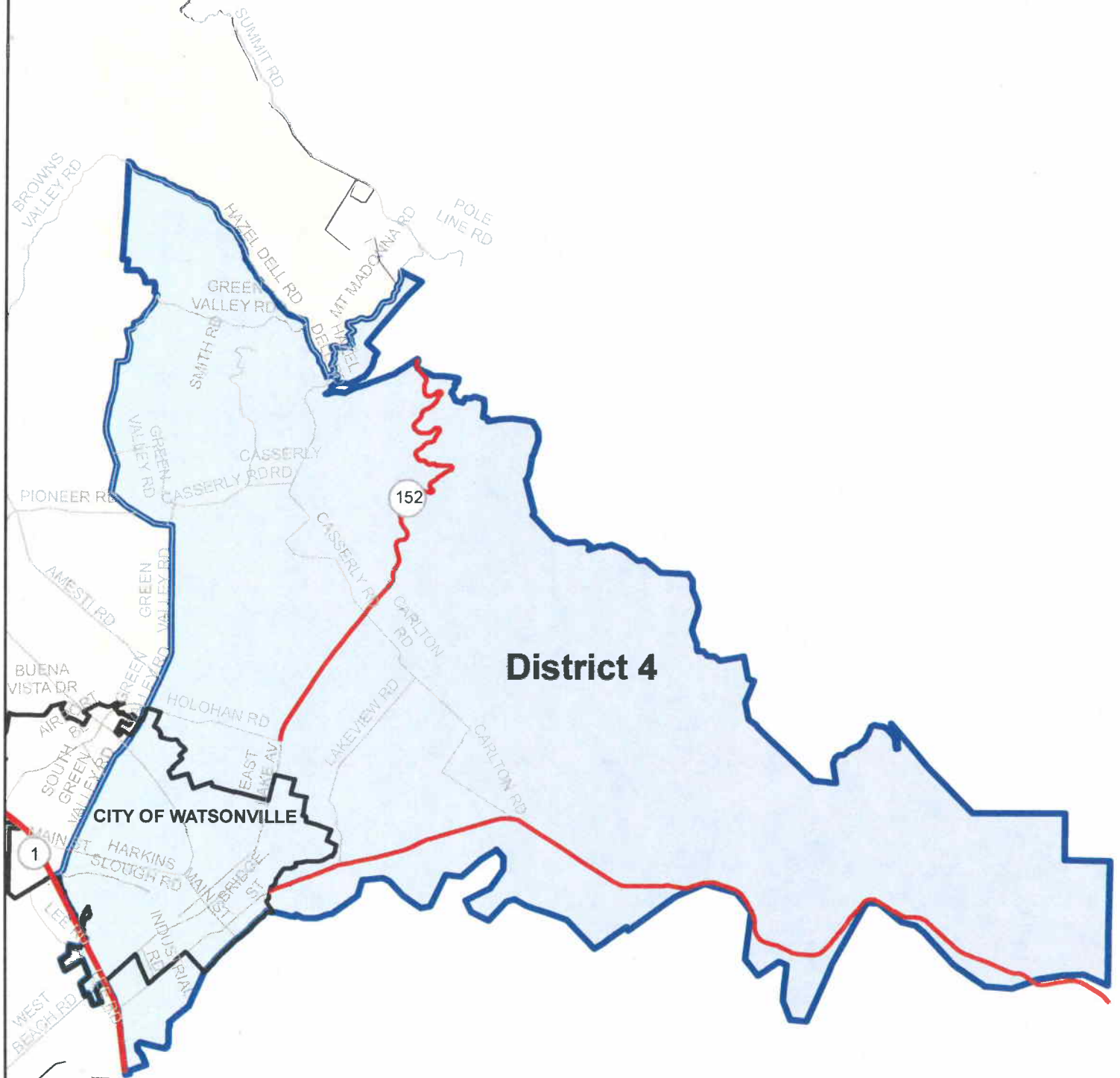
Plan 1 : Map A3

Third District Boundary



Plan 1 : Map A4

Fourth District Boundary



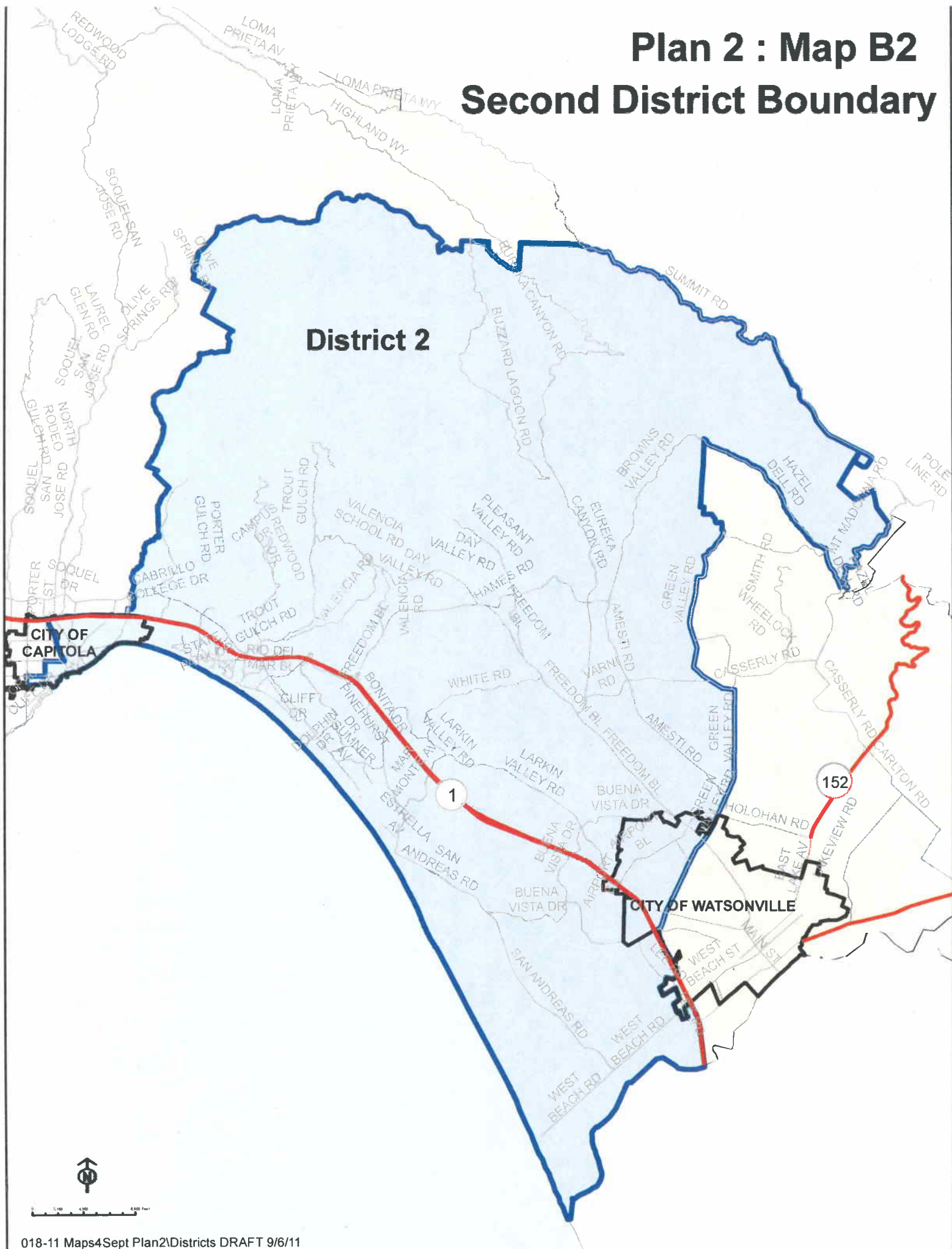
[illegible]

PLAN 2 - MAPS

Map B1 – First District Boundaries
Map B2 – Second District Boundaries
Map B3 – Third District Boundaries
Map B4 – Fourth District Boundaries
Map B5 – Fifth District Boundaries

[illegible]

Second District Boundary



Plan 2 : Map B3 Third District Boundary

District 3

CITY OF SCOTTS VALLEY

CITY OF SANTA CRUZ

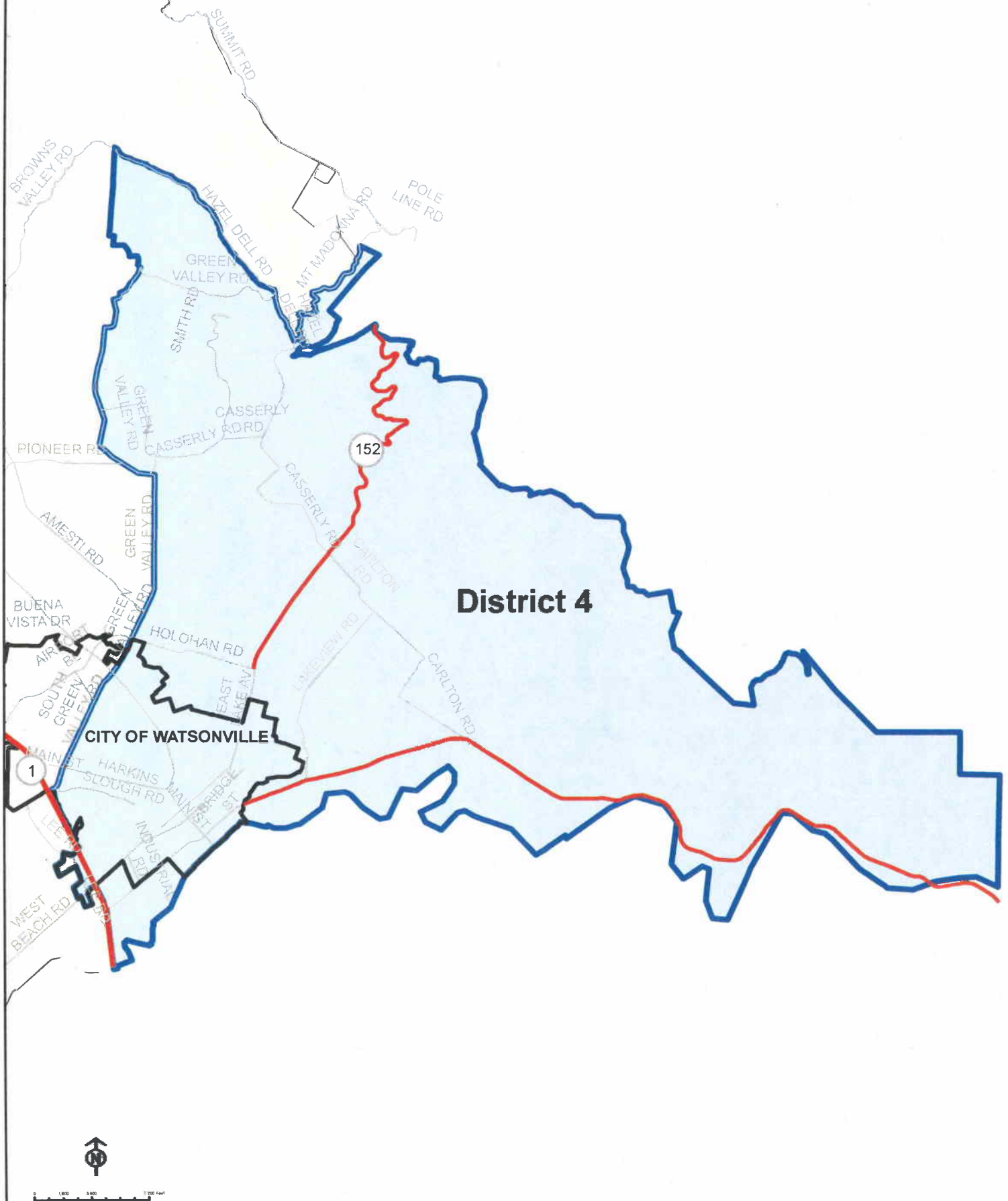
CITY OF CAPITOL HILL



0 1,000 2,000 Feet

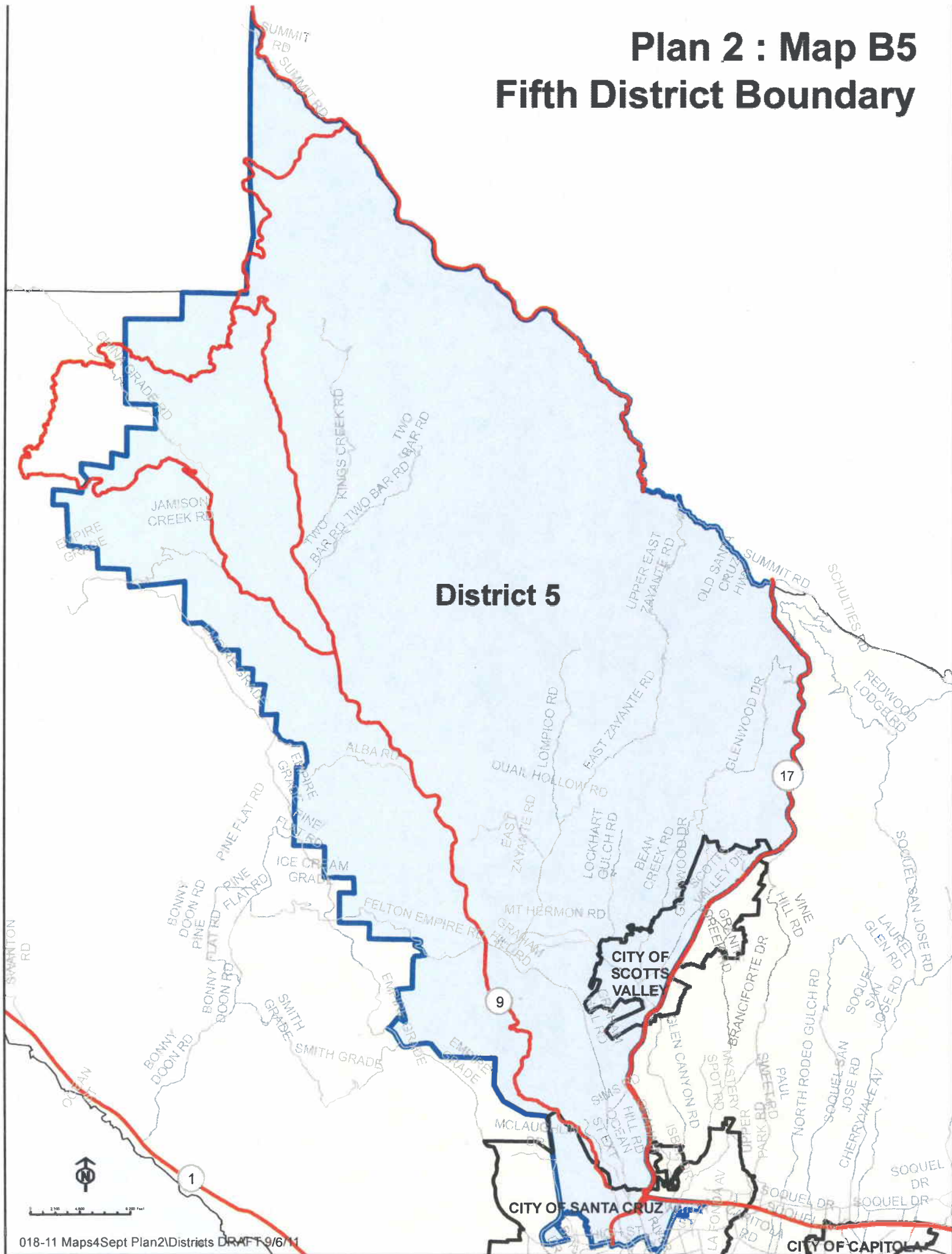
Plan 2 : Map B4

Fourth District Boundary



Plan 2 : Map B5

Fifth District Boundary



POPULATION DATA

PLAN 1 AND PLAN 2

Attachment: Population Data and Maps 1-6 with Detail

Census 2010 Baseline Data - Existing Boundaries

	Population	Hispanic	% Hispanic	Non-Hispanic	% Non-Hispanic	18+	%18+	H18+	%H18+
District 1	49,049	9,441	19%	39,608	81%	39,572	81%	6,394	16%
District 2	50,173	12,022	24%	38,151	76%	39,785	79%	7,969	20%
District 3	54,427	10,200	19%	44,227	81%	47,157	87%	7,876	17%
District 4	58,954	46,948	80%	12,006	20%	40,509	69%	30,415	75%
District 5	49,779	5,481	11%	44,298	89%	39,941	80%	3,854	10%

Census 2010 Population Data - Plan 1

	Population	% of Total	Hispanic	% Hispanic	Non-Hispanic	% Non-Hispanic	18+	%18+	H18+	%H18+
District 1	53,144	20%	10,571	20%	42,573	80%	42,706	80%	7,149	17%
District 2	53,879	21%	17,019	32%	36,860	68%	41,878	78%	11,200	27%
District 3	52,627	20%	9,796	19%	42,831	81%	45,549	87%	7,560	17%
District 4	52,186	20%	41,086	79%	11,100	21%	35,936	69%	26,615	74%
District 5	50,546	19%	5,620	11%	44,926	89%	40,895	81%	3,984	10%

Census 2010 Population Data - Plan 2

	Population	% of Total	Hispanic	% Hispanic	Non-Hispanic	% Non-Hispanic	18+	%18+	H18+	%H18+
District 1	53,144	20%	10,571	20%	42,573	80%	42,706	80%	7,149	17%
District 2	53,879	21%	17,019	32%	36,860	68%	41,878	78%	11,200	27%
District 3	53,943	21%	10,018	19%	43,925	81%	46,860	87%	7,780	17%
District 4	52,186	20%	41,086	79%	11,100	21%	35,936	69%	26,615	74%
District 5	49,230	19%	5,398	11%	43,832	89%	39,584	80%	3,764	10%

2010 Total Population 262,382

Target Population 52,476

H = Hispanic Population