



County of Santa Cruz

COUNTY ADMINISTRATIVE OFFICE

701 OCEAN STREET, SUITE 520, SANTA CRUZ, CA 95060-4073

(831) 454-2100 FAX: (831) 454-3420 TDD: (831) 454-2123

SUSAN MAURIELLO, J.D., COUNTY ADMINISTRATIVE OFFICER

March 28, 2011

Agenda: April 5, 2011

BOARD OF SUPERVISORS
County of Santa Cruz
701 Ocean Street
Santa Cruz, CA 95060

Dear Members of the Board:

Redistricting of Supervisorial Boundaries – Census Count

On March 22, 2011, your Board directed staff to return on April 5, 2011 with information on the 2010 Census Population of each Supervisorial District and the population shifts need to achieve numerical equality.

Numerical Equality

Section 21500 of the Elections Code states that “following each decennial federal census, and using that census as a basis, the board shall adjust the boundaries of any or all of the supervisorial districts of the county so that the districts shall be as nearly equal in population as may be...”. According to the 2010 Census data, the County of Santa Cruz has a population of 262,382. The precise target for numerical equality for each district is the total population divided by 5, or 52,476.40 persons. As work progresses, each District’s population will be expressed in whole persons. The following table illustrates the census population for each Supervisorial district, and shortages or excesses as compared to the target population.

District	Population Target	Census Population	Over/Under Population Target
1 st	52,476.40	49,049	(3,427.40)
2 nd	52,476.40	50,173	(2,303.40)
3 rd	52,476.40	54,427	1,950.60
4 th	52,476.40	58,954	6,477.60
5 th	52,476.40	49,779	(2,697.40)
County Population		262,382	

There are 5,085 census blocks in the County, and of those, there are 23 blocks that were intersected by Supervisorial district lines. Geographic Information System (GIS) staff allocated the blocks to a single Supervisorial district based on how much geographic area of the block was in each District. In this way, no census blocks were split. Maps demonstrating the allocation of these 23 blocks as well maps of the existing Supervisorial boundaries have been placed on file with the Clerk of the Board, and will be available to the public on the County's redistricting website.

Next Steps

As your Board will recall, our office has formed a redistricting working group comprised of the County Clerk and staff, County Counsel, the Information Services Director and GIS staff, and staff from my office (CAO). This group will provide technical assistance to the redistricting effort and CAO Task Force on redistricting. Staff anticipates that this group will have its first joint meeting on or about April 20, 2011 and next steps will include refining the redistricting timeline, and establishing dates and times for at least two public meetings to be held this spring. Task Force members will be introduced to the redistricting process and guidelines and to the redistricting software tool. One-on-one training will be available. Staff also expects to receive your choice of up to five local election contests to load into the GIS databases.

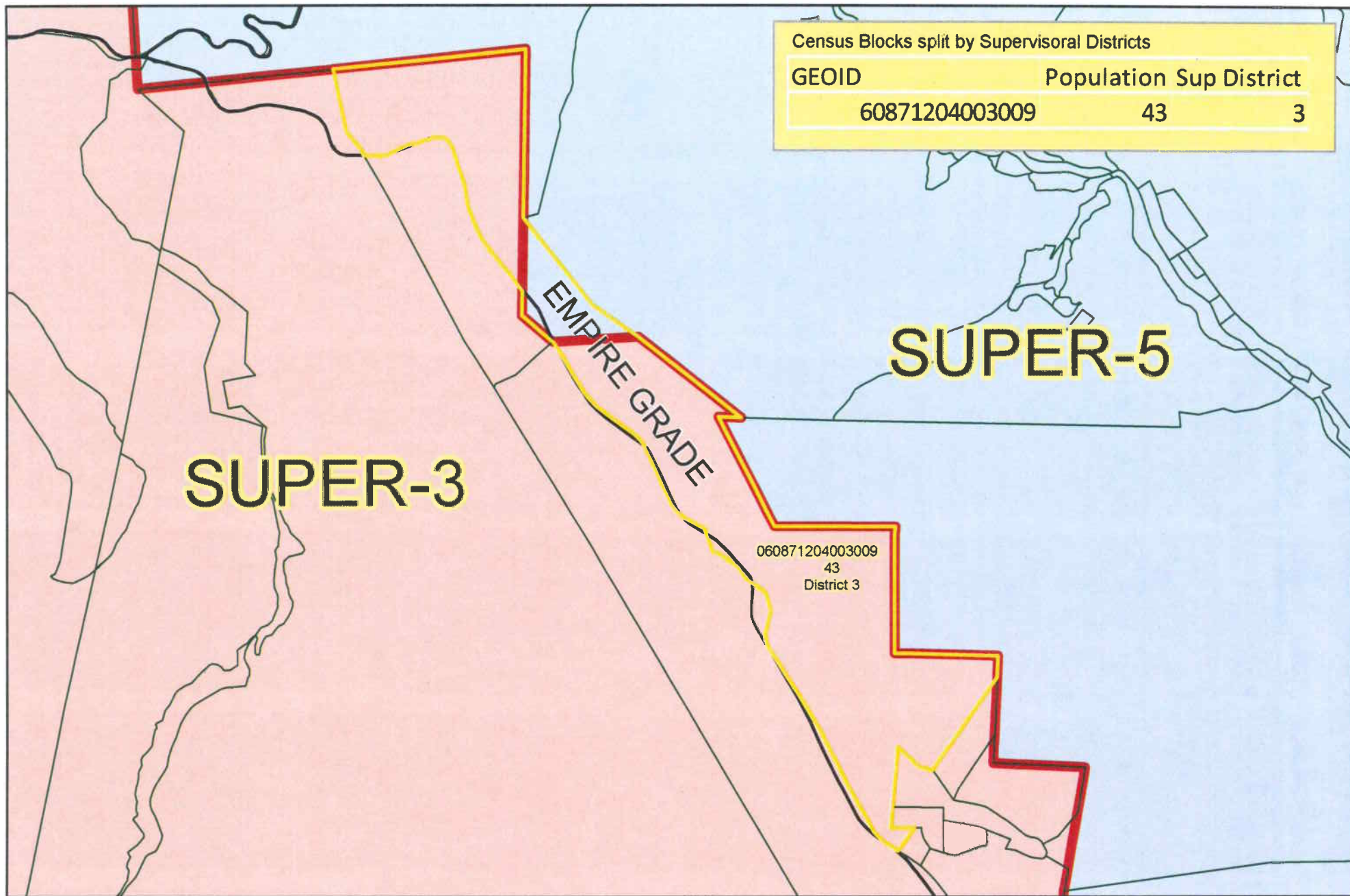
Further updates on the redistricting of Supervisorial boundaries will be provided as they become available. It is therefore recommended that your Board accept and file this report on the redistricting of Supervisorial boundaries.

Very truly yours,

A handwritten signature in black ink, appearing to read "Susan A. Mauriello", with a large, stylized loop at the end.

SUSAN A. MAURIELLO
County Administrative Officer

Copy to: County Counsel
County Clerk
Information Services Department



Map 1

Labels indicate:
2010 Census Block
Population and
Supervisorial District



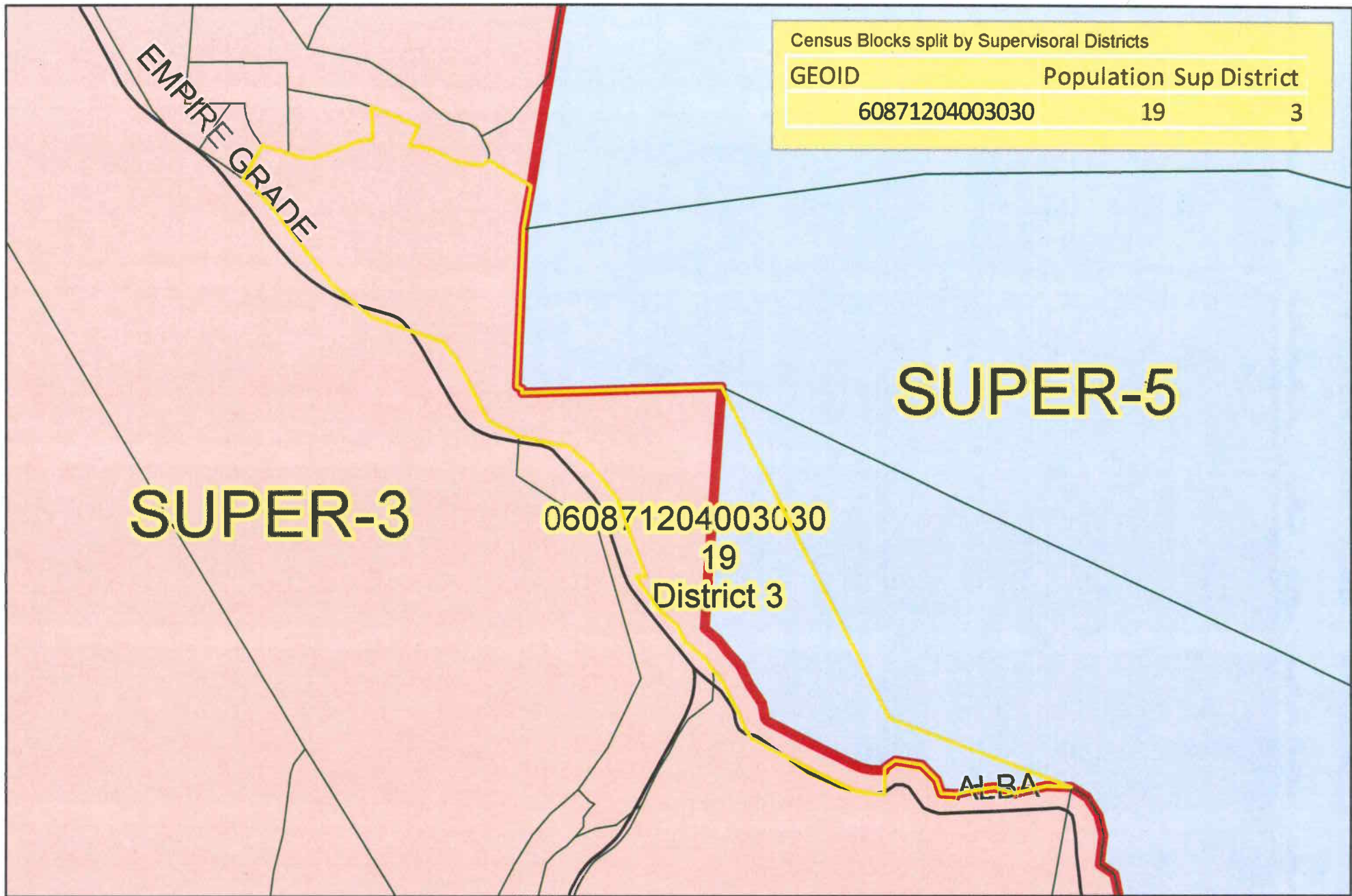
Current Supervisorial District Boundary

Census Blocks Split By Supervisorial Districts

0 1,500 3,000 6,000 Feet



Prepared by the Santa Cruz County GIS, March 2011; Project # 018-11



Map 2

Labels indicate:
2010 Census Block
Population and
Supervisorial District



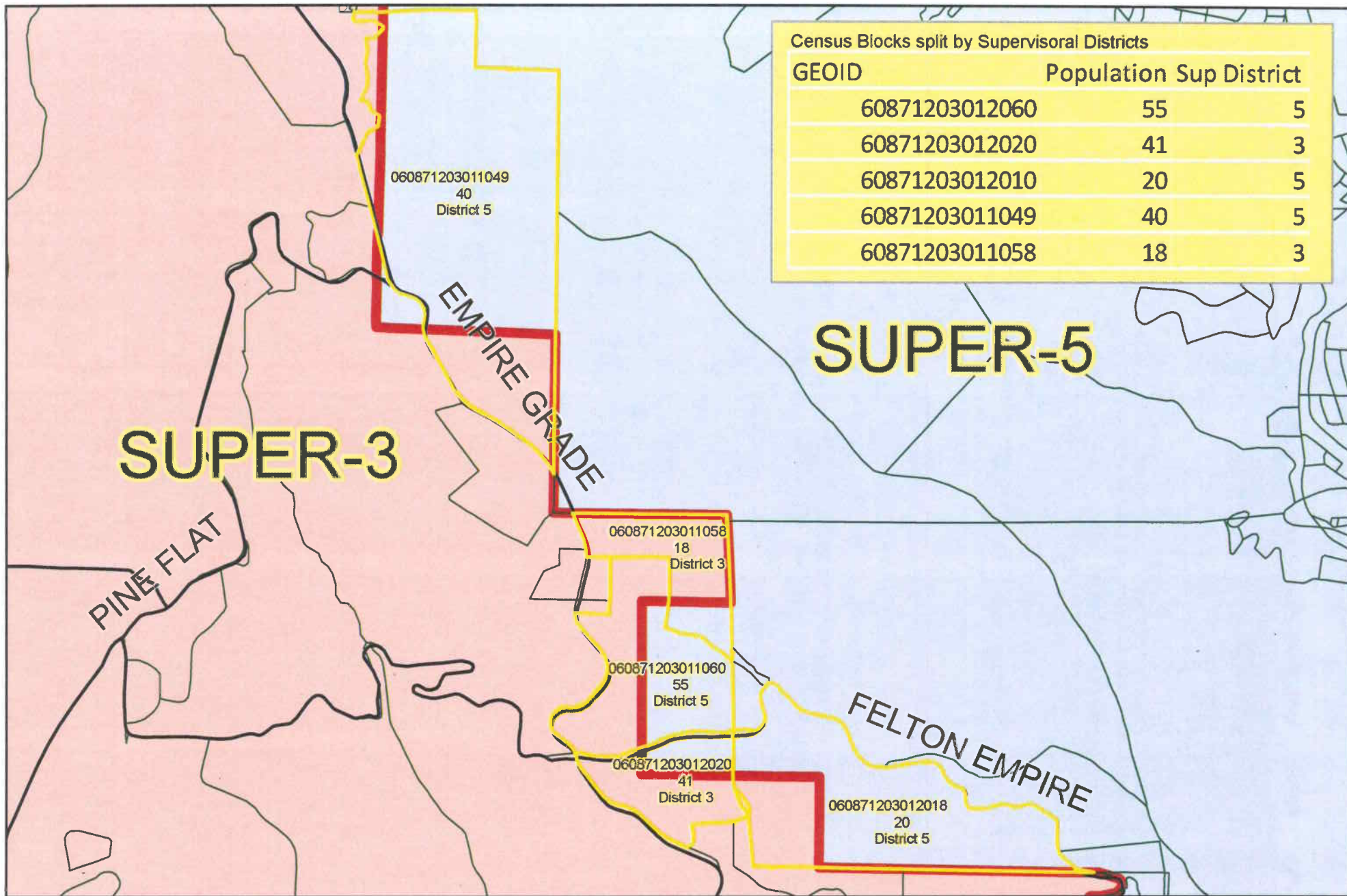
Current Supervisorial District Boundary

Census Blocks Split By Supervisorial Districts

0 750 1,500 3,000 Feet



Prepared by the Santa Cruz County GIS, March 2011; Project # 018-11



Map 3

Labels indicate:
2010 Census Block
Population and
Supervisorial District



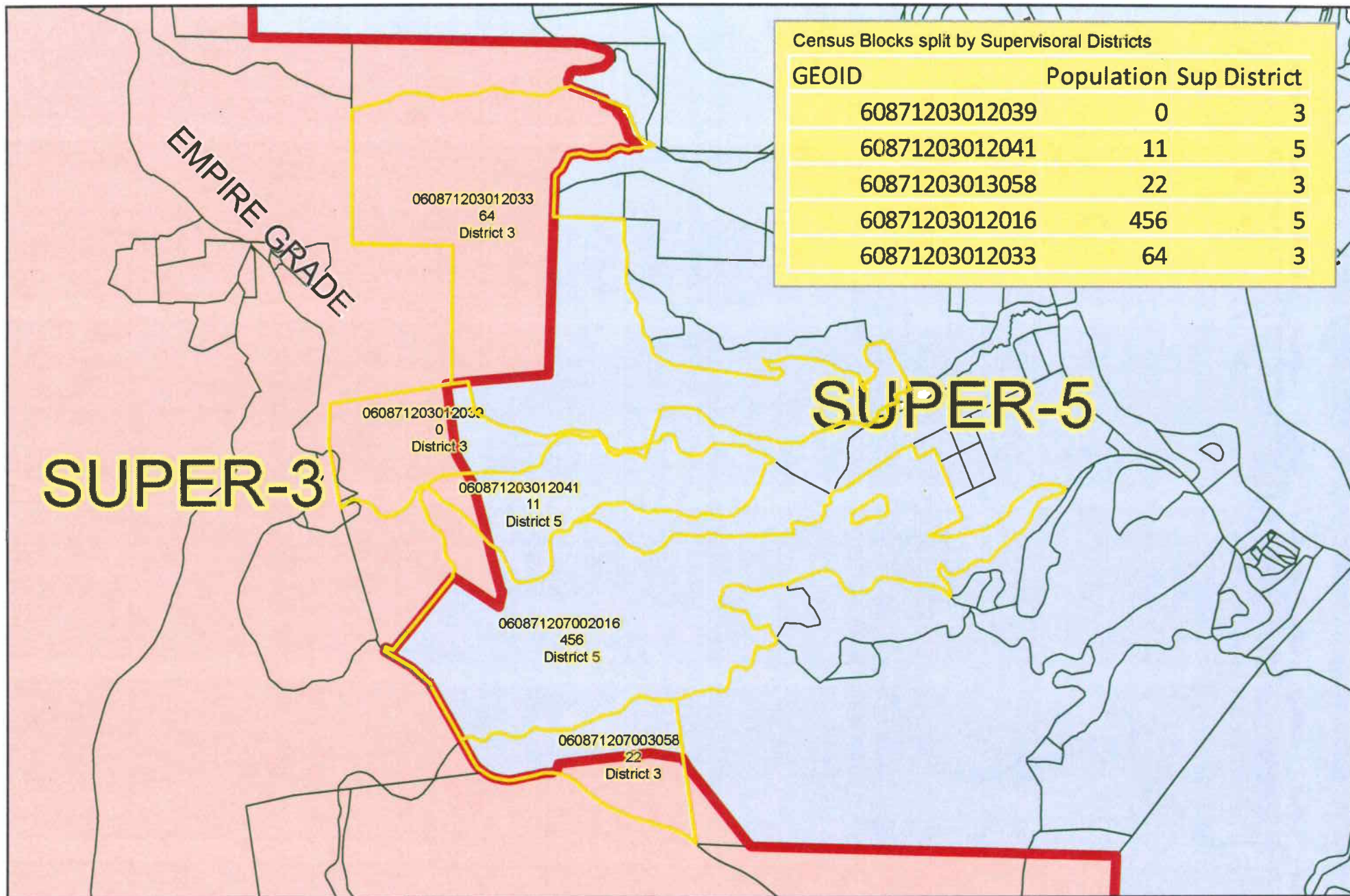
Current Supervisorial District Boundary

Census Blocks Split By Supervisorial Districts

0 1,500 3,000 6,000
Feet



Prepared by the Santa Cruz County GIS, March 2011; Project # 018-11



Map 4

Labels indicate:
2010 Census Block
Population and
Supervisorial District



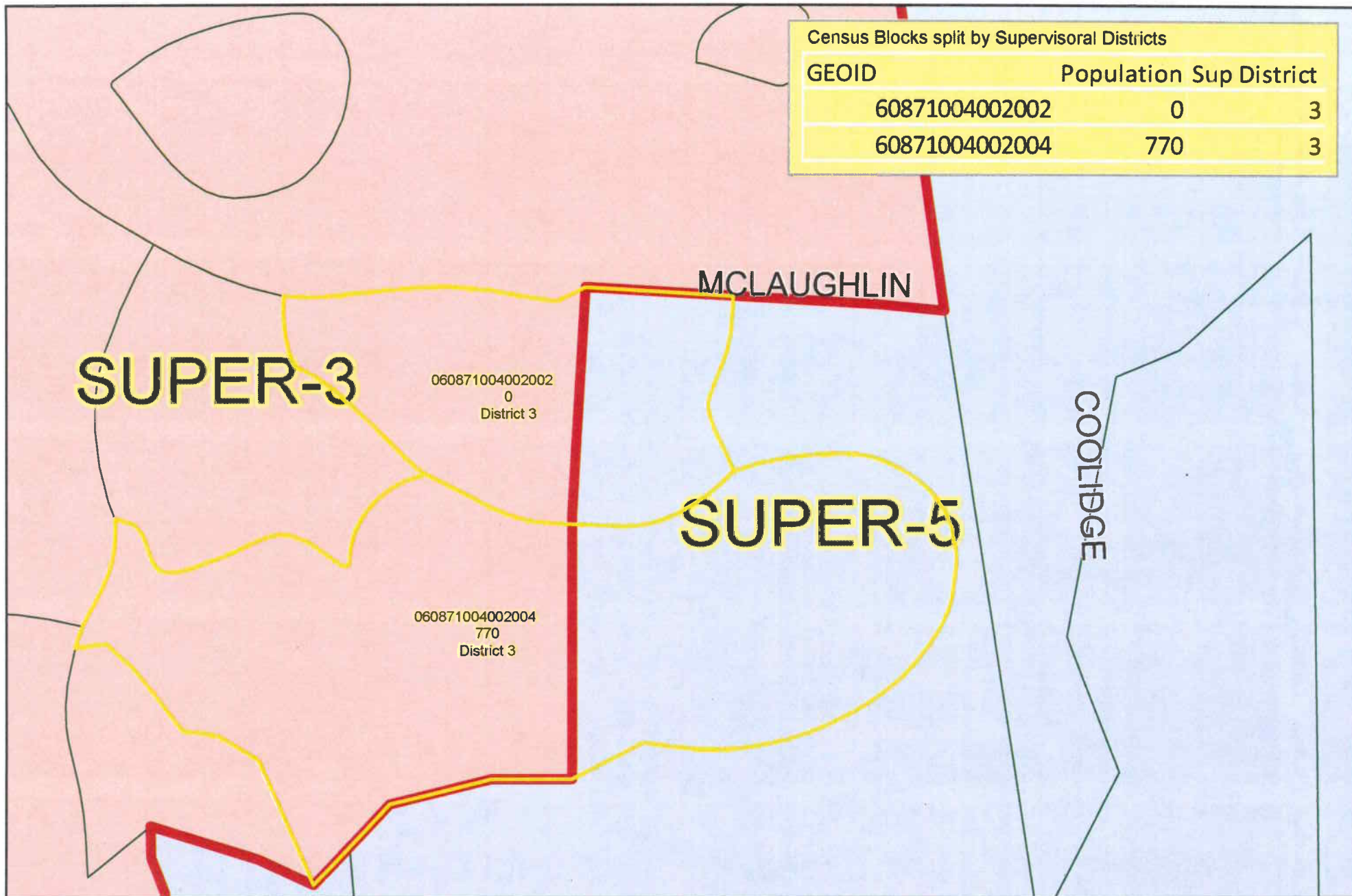
Current Supervisorial District Boundary

Census Blocks Split By Supervisorial Districts

0 1,500 3,000 6,000 Feet



Prepared by the Santa Cruz County GIS, March 2011; Project # 018-11



Map 5

Labels indicate:
2010 Census Block
Population and
Supervisorial District

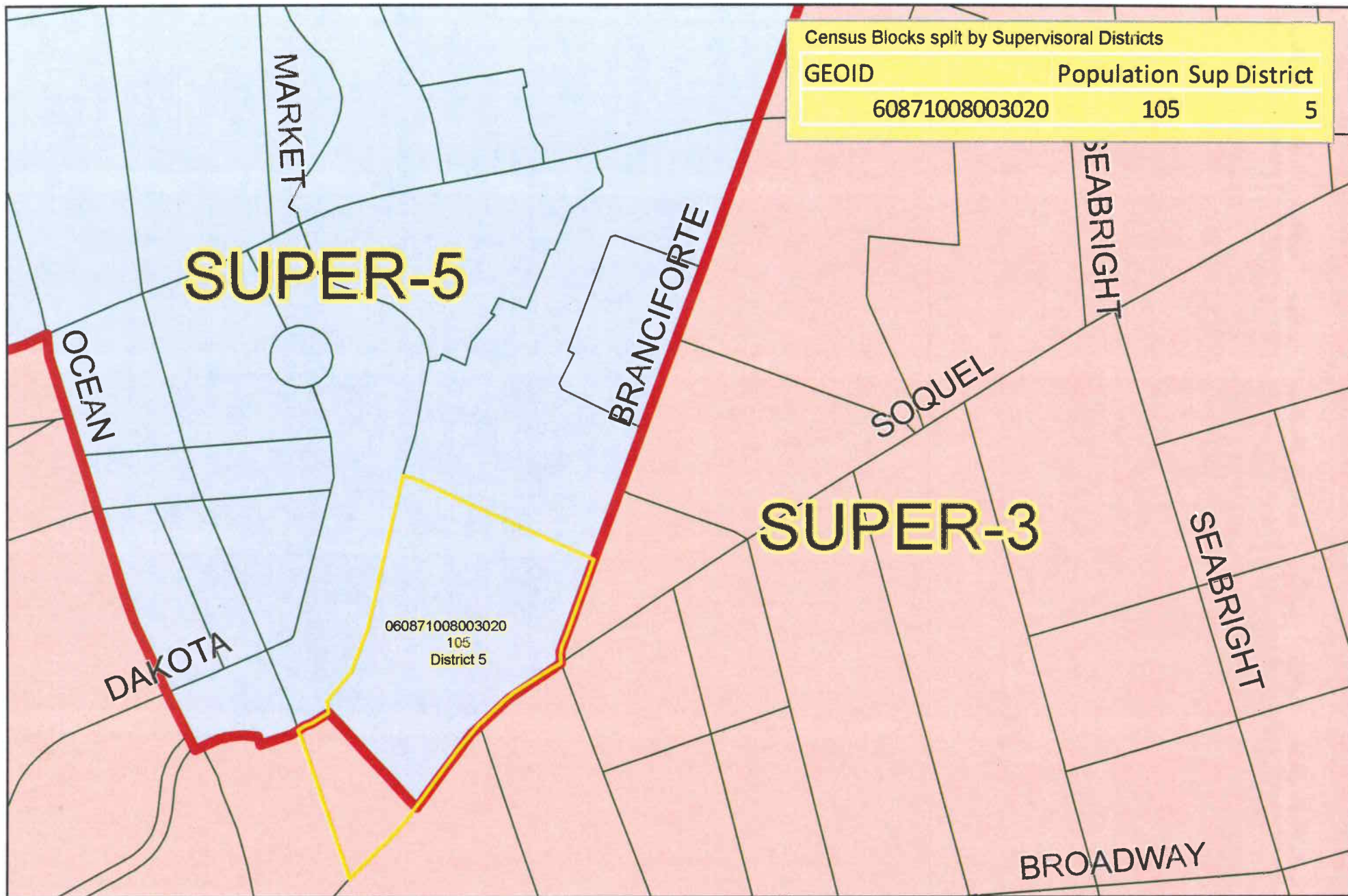
— Current Supervisorial District Boundary

Census Blocks Split By Supervisorial Districts

0 175 350 700 Feet



Prepared by the Santa Cruz County GIS, March 2011; Project # 018-11



Map 6

Labels indicate:
2010 Census Block
Population and
Supervisorial District



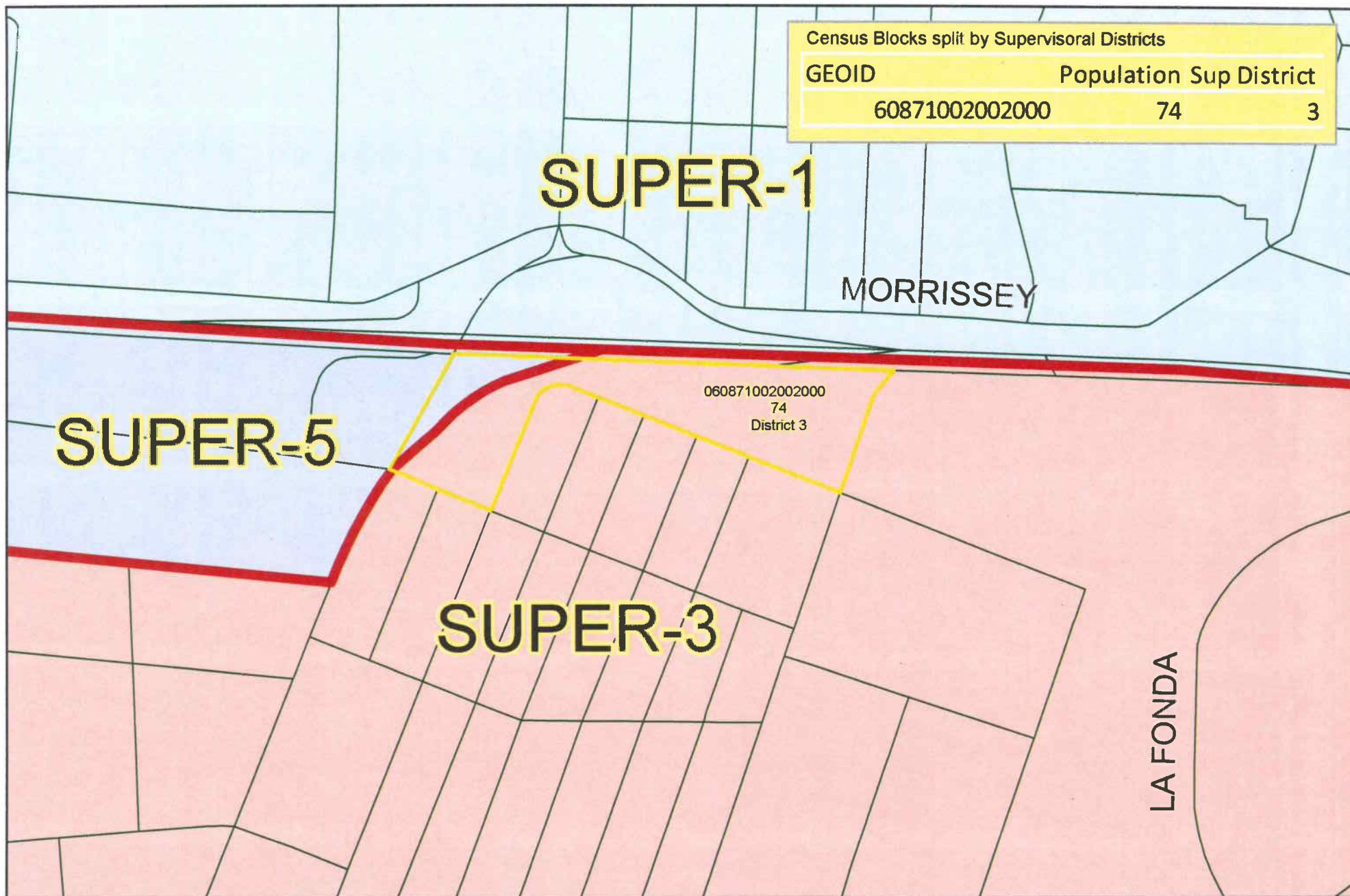
Current Supervisorial District Boundary

Census Blocks Split By Supervisorial Districts

0 300 600 1,200 Feet



Prepared by the Santa Cruz County GIS, March 2011; Project # 018-11



Map 7

Labels indicate:
2010 Census Block
Population and
Supervisorial District



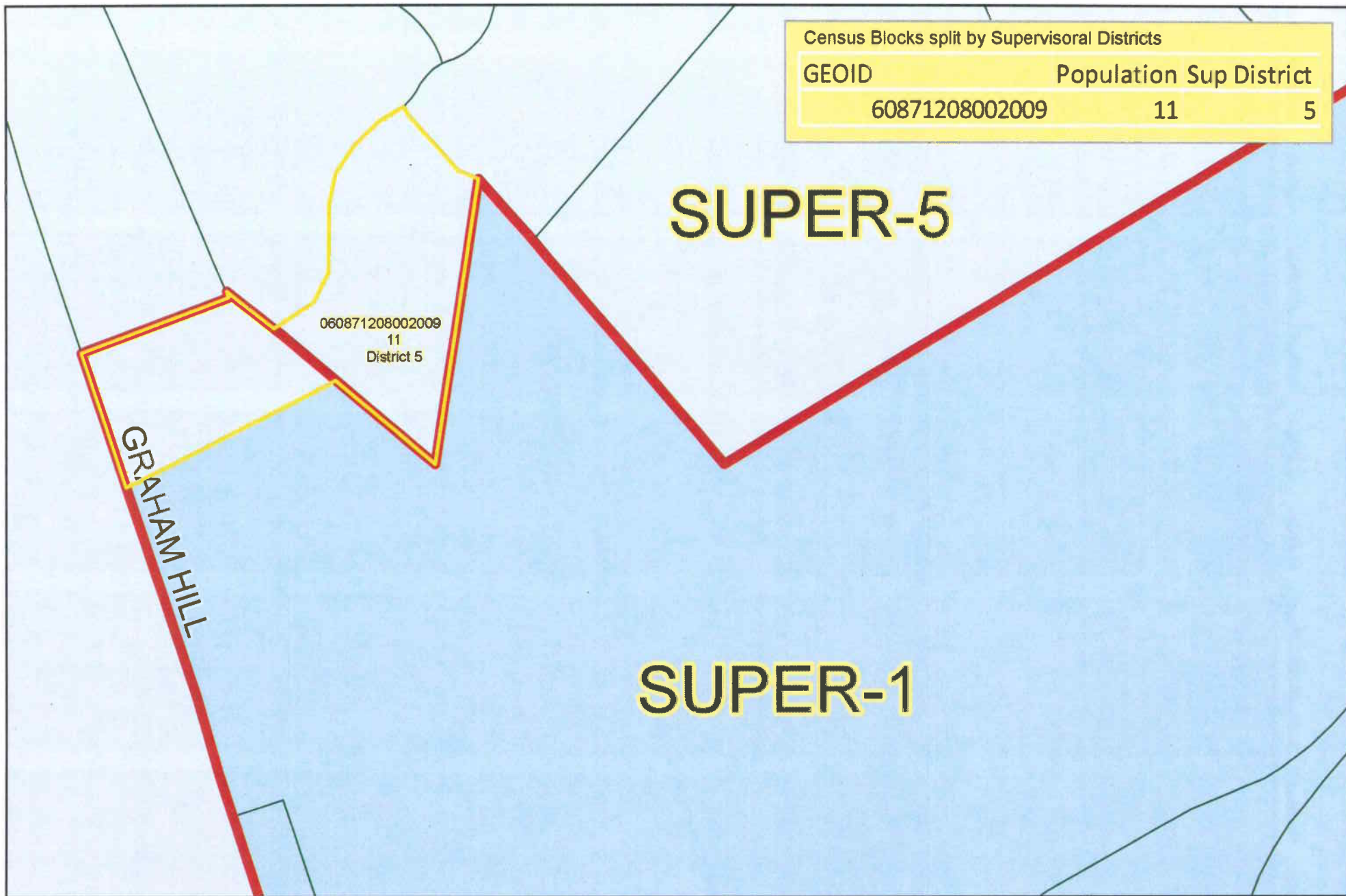
Current Supervisorial District Boundary

Census Blocks Split By Supervisorial Districts

0 300 600 1,200
Feet



Prepared by the Santa Cruz County GIS, March 2011; Project # 018-11



Map 8

Labels indicate:
2010 Census Block
Population and
Supervisorial District



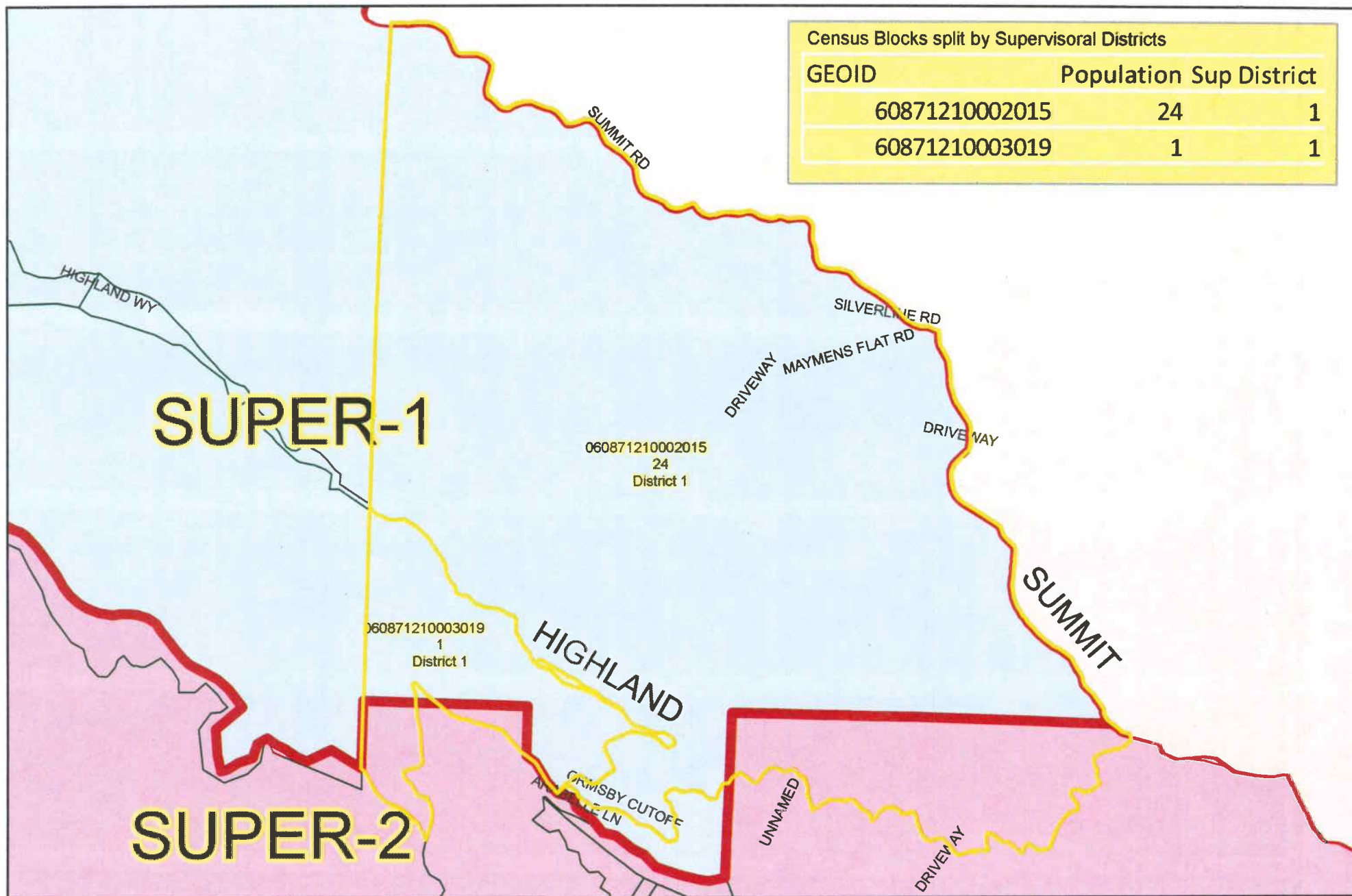
Current Supervisorial District Boundary

Census Blocks Split By Supervisorial Districts

0 350 700 1,400 Feet



Prepared by the Santa Cruz County GIS, March 2011; Project # 018-11



Map 9

Labels indicate:
2010 Census Block
Population and
Supervisorial District



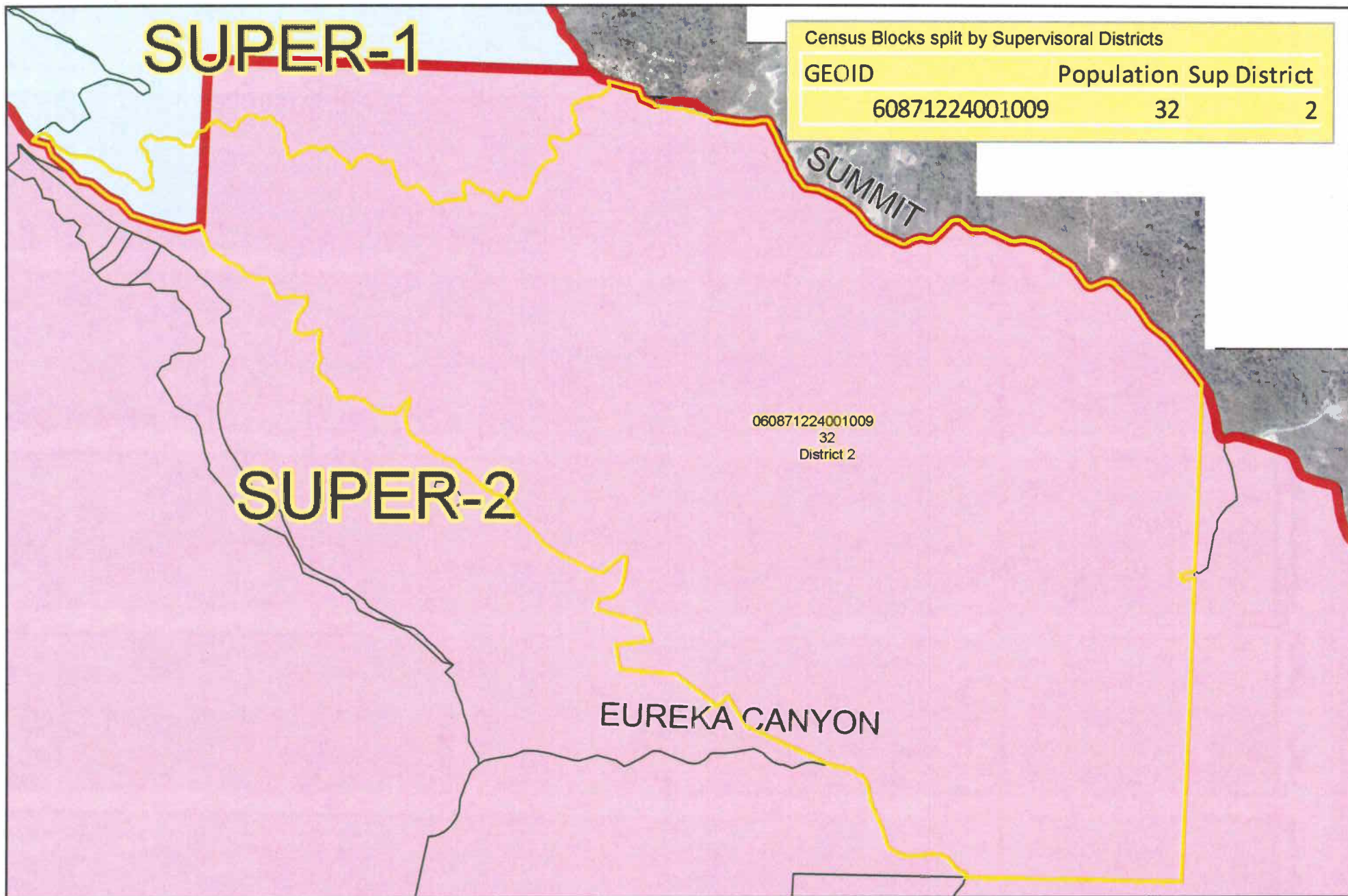
Current Supervisorial District Boundary

Census Blocks Split By Supervisorial Districts

0 1,500 3,000 6,000 Feet



Prepared by the Santa Cruz County GIS, March 2011; Project # 018-11



Map 10

Labels indicate:
2010 Census Block
Population and
Supervisorial District



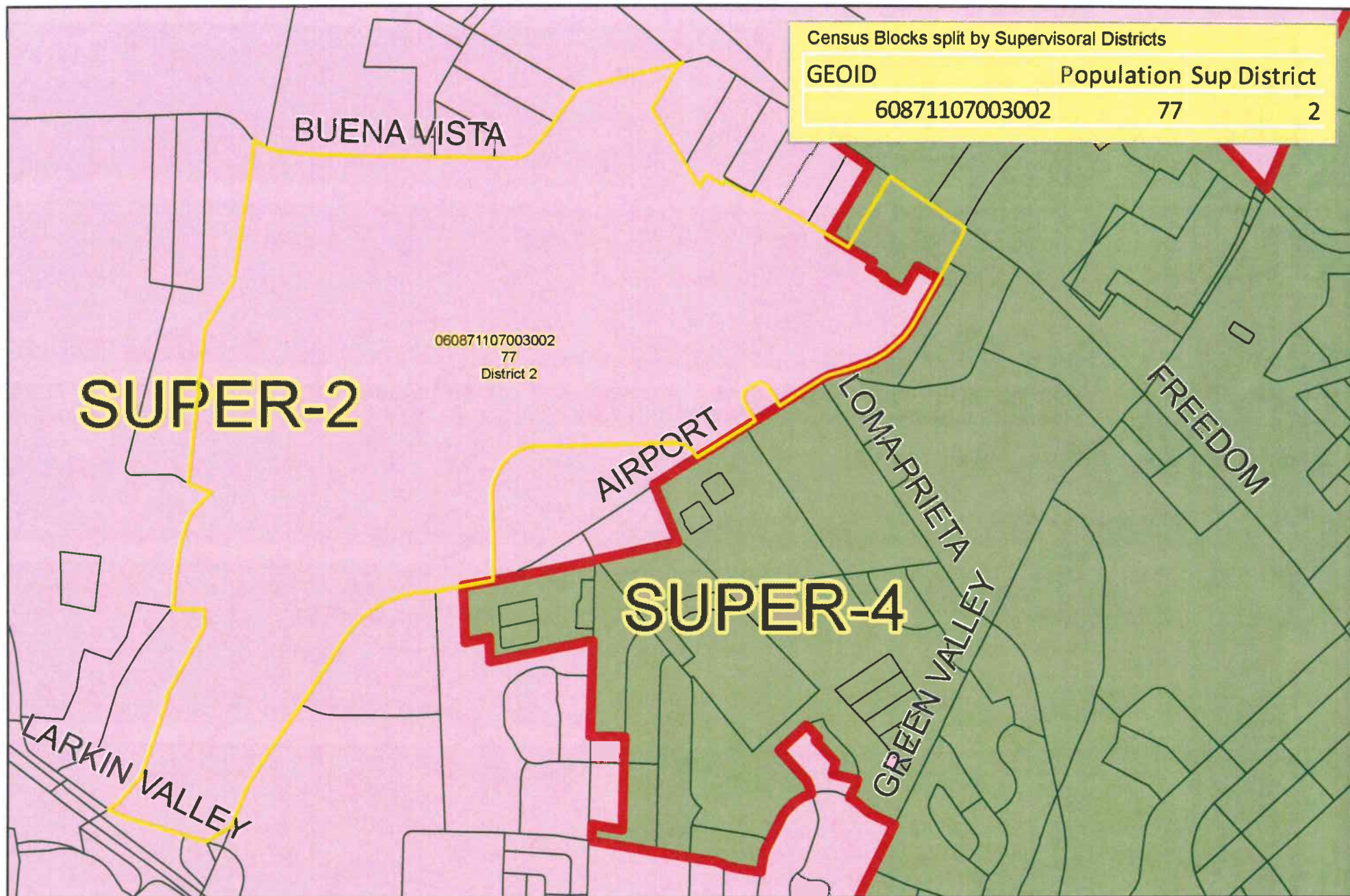
Current Supervisorial District Boundary

Census Blocks Split By Supervisorial Districts

0 1,500 3,000 6,000 Feet



Prepared by the Santa Cruz County GIS, March 2011; Project # 018-11



Map 11

Labels indicate:
2010 Census Block
Population and
Supervisorial District



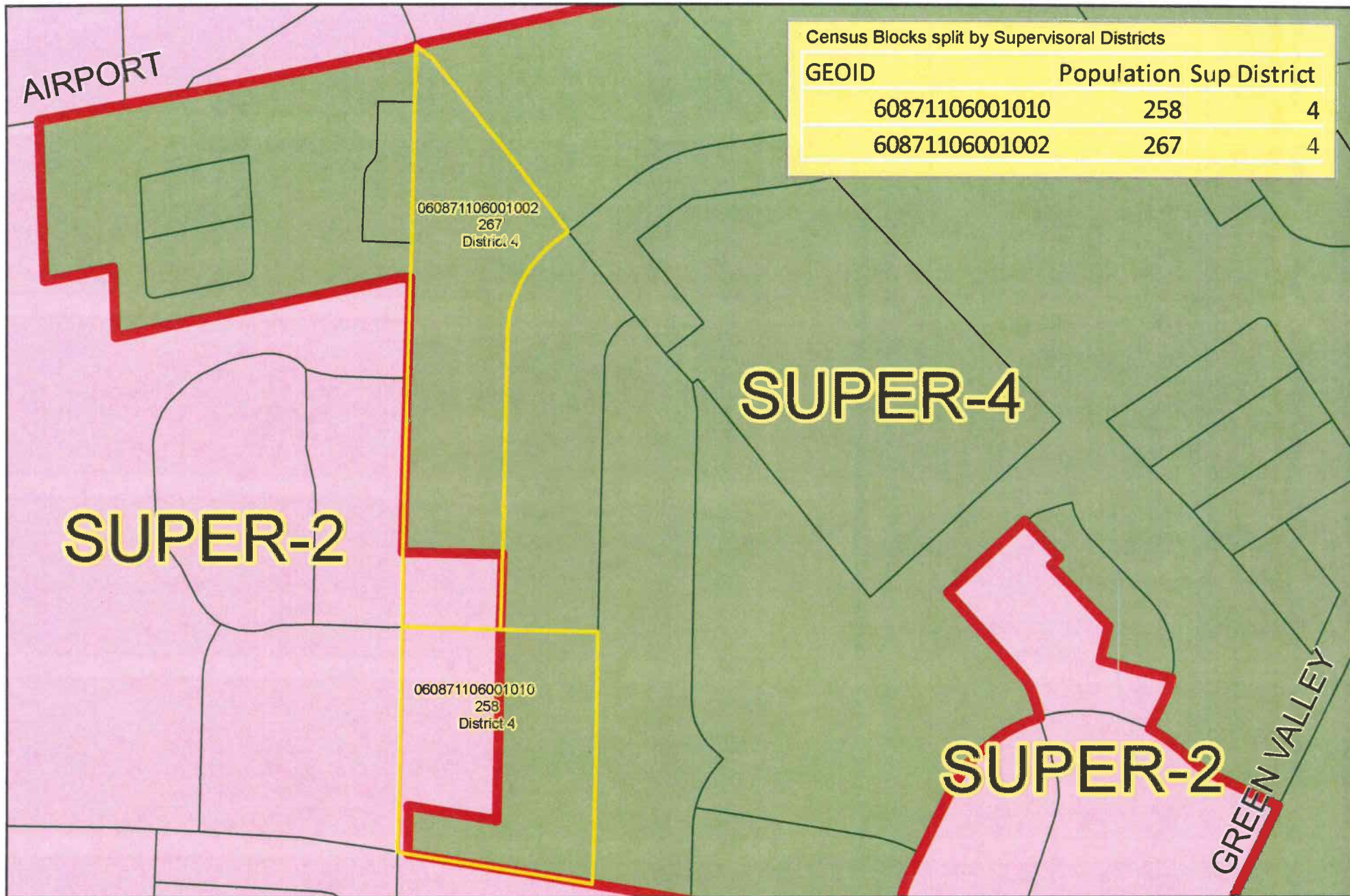
Current Supervisorial District Boundary

Census Blocks Split By Supervisorial Districts

0 750 1,500 3,000 Feet



Prepared by the Santa Cruz County GIS, March 2011; Project # 018-11



Map 12

Labels indicate:
 2010 Census Block
 Population and
 Supervisorial District



Current Supervisorial District Boundary

Census Blocks Split By Supervisorial Districts

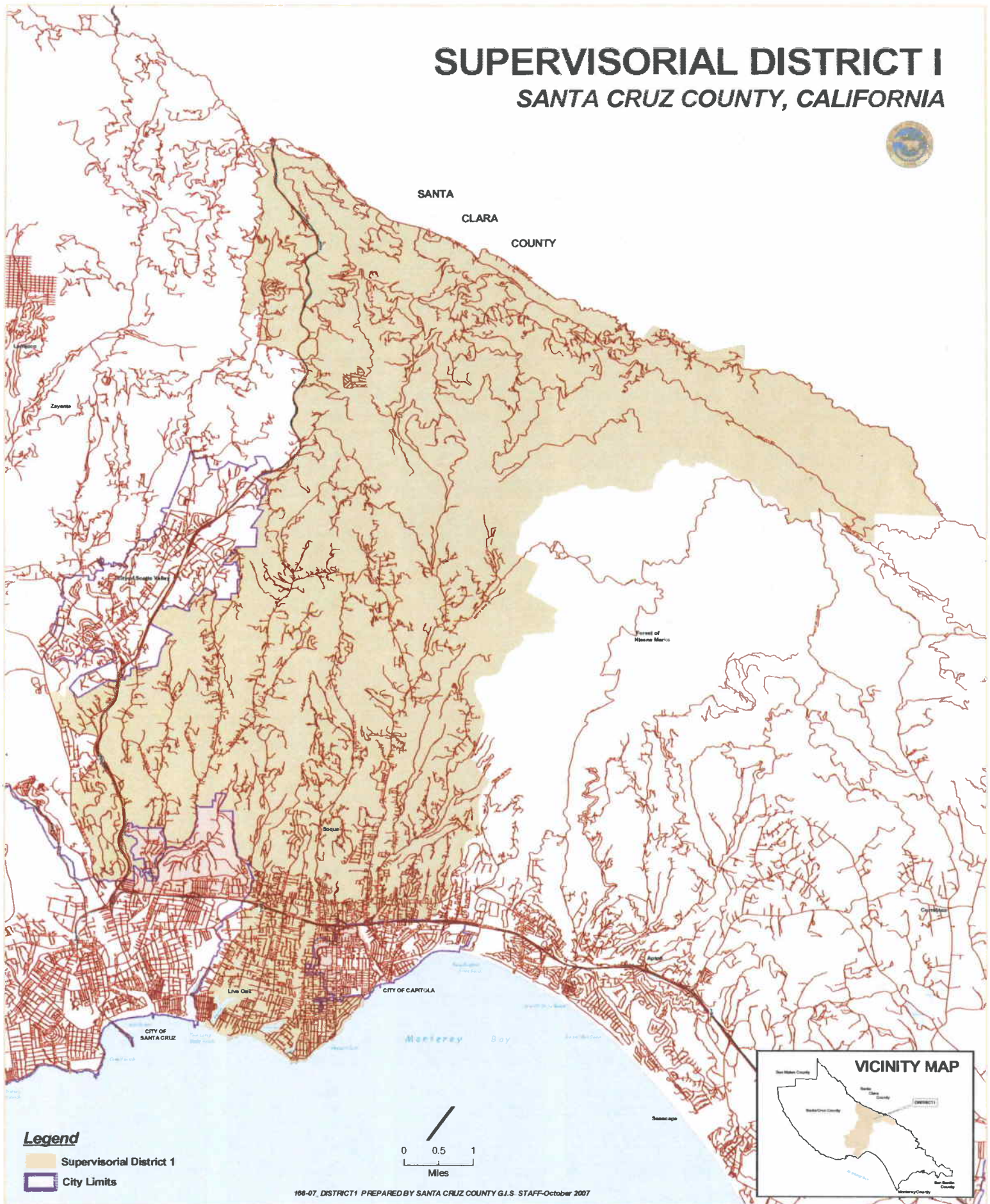
0 250 500 1,000
 Feet



Prepared by the Santa Cruz County GIS, March 2011; Project # 018-11

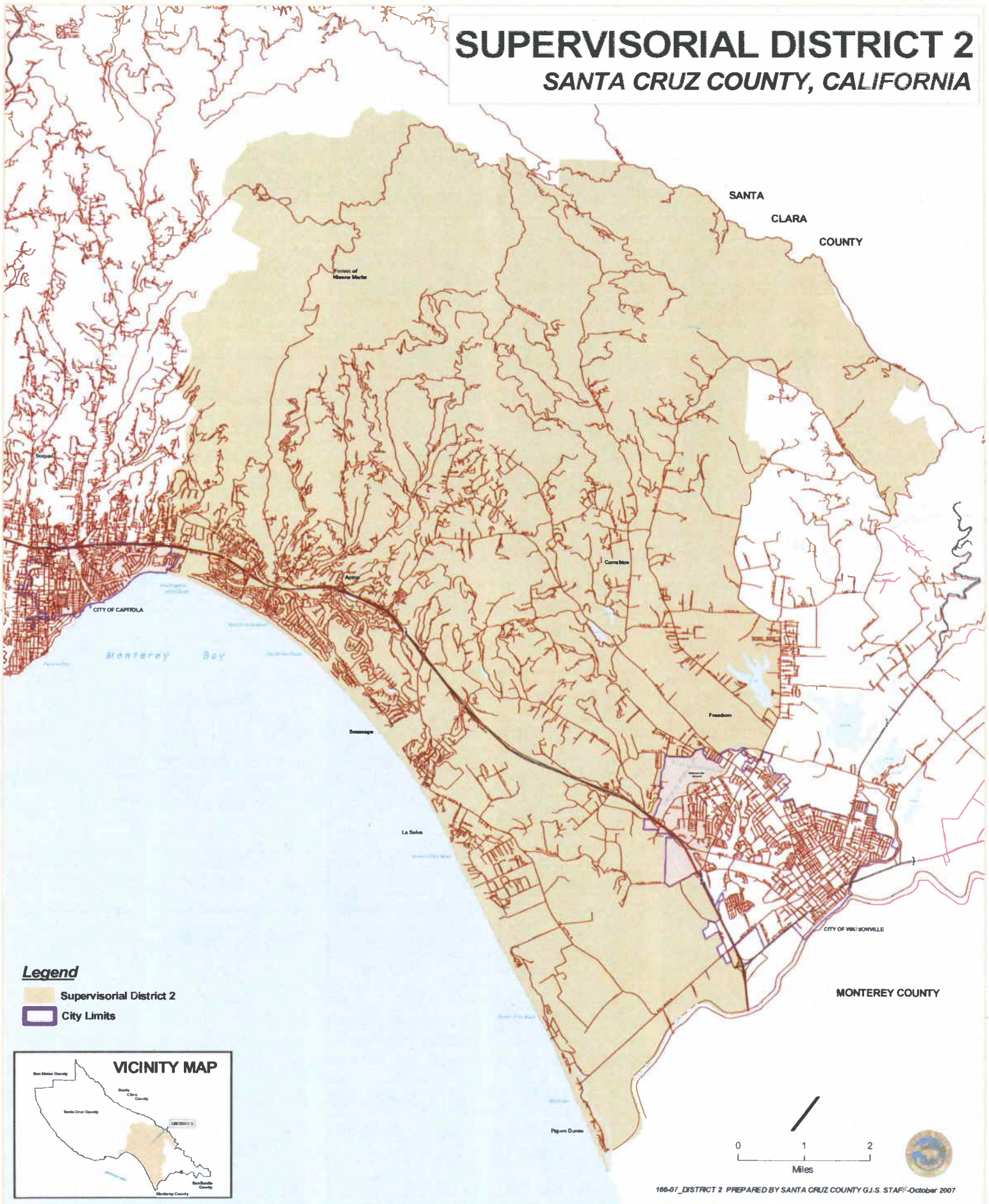
SUPERVISORIAL DISTRICT I

SANTA CRUZ COUNTY, CALIFORNIA



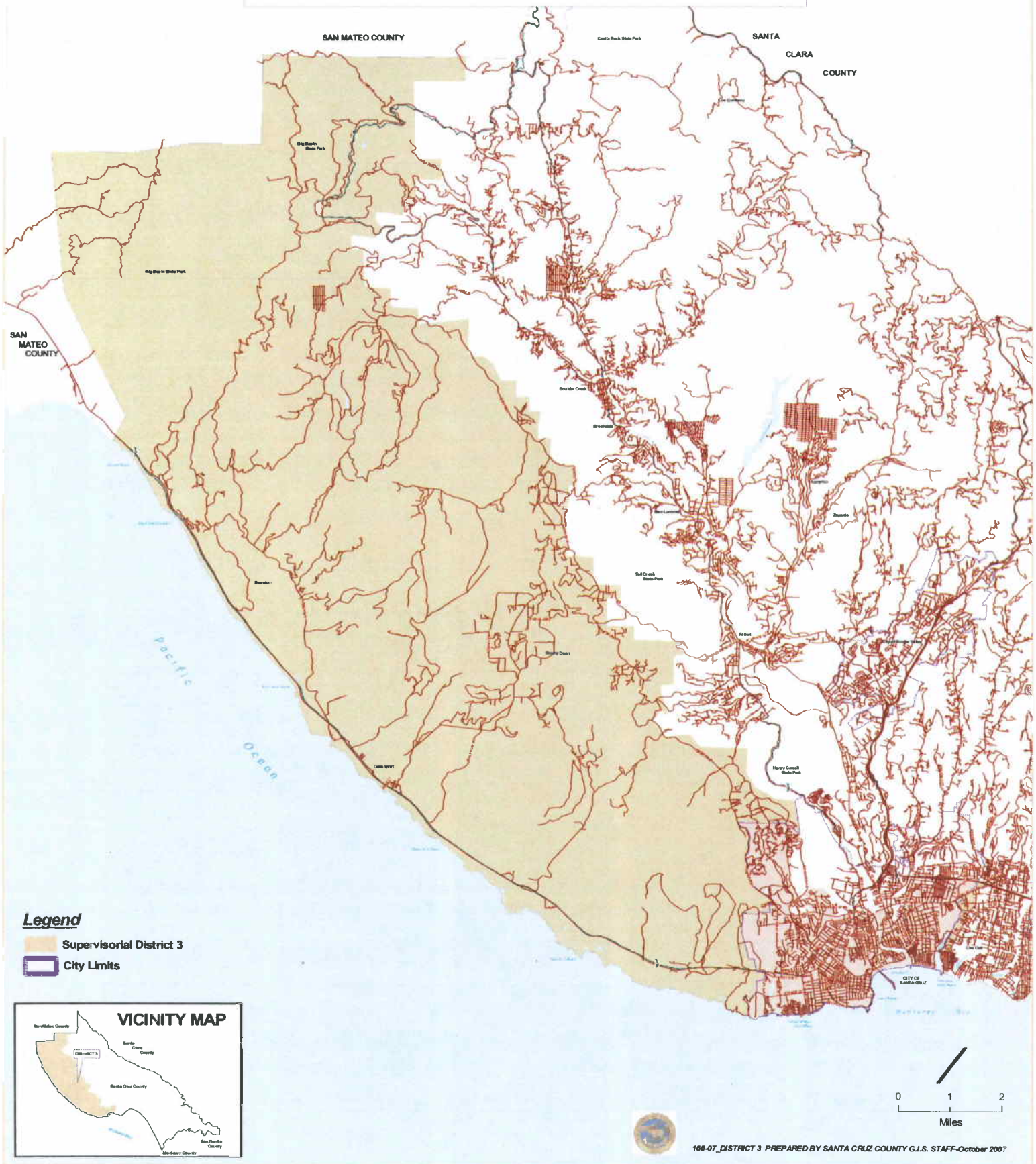
SUPERVISORIAL DISTRICT 2

SANTA CRUZ COUNTY, CALIFORNIA



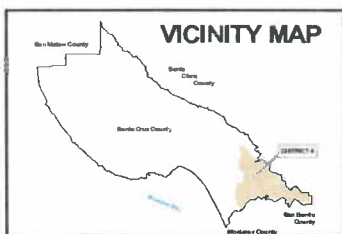
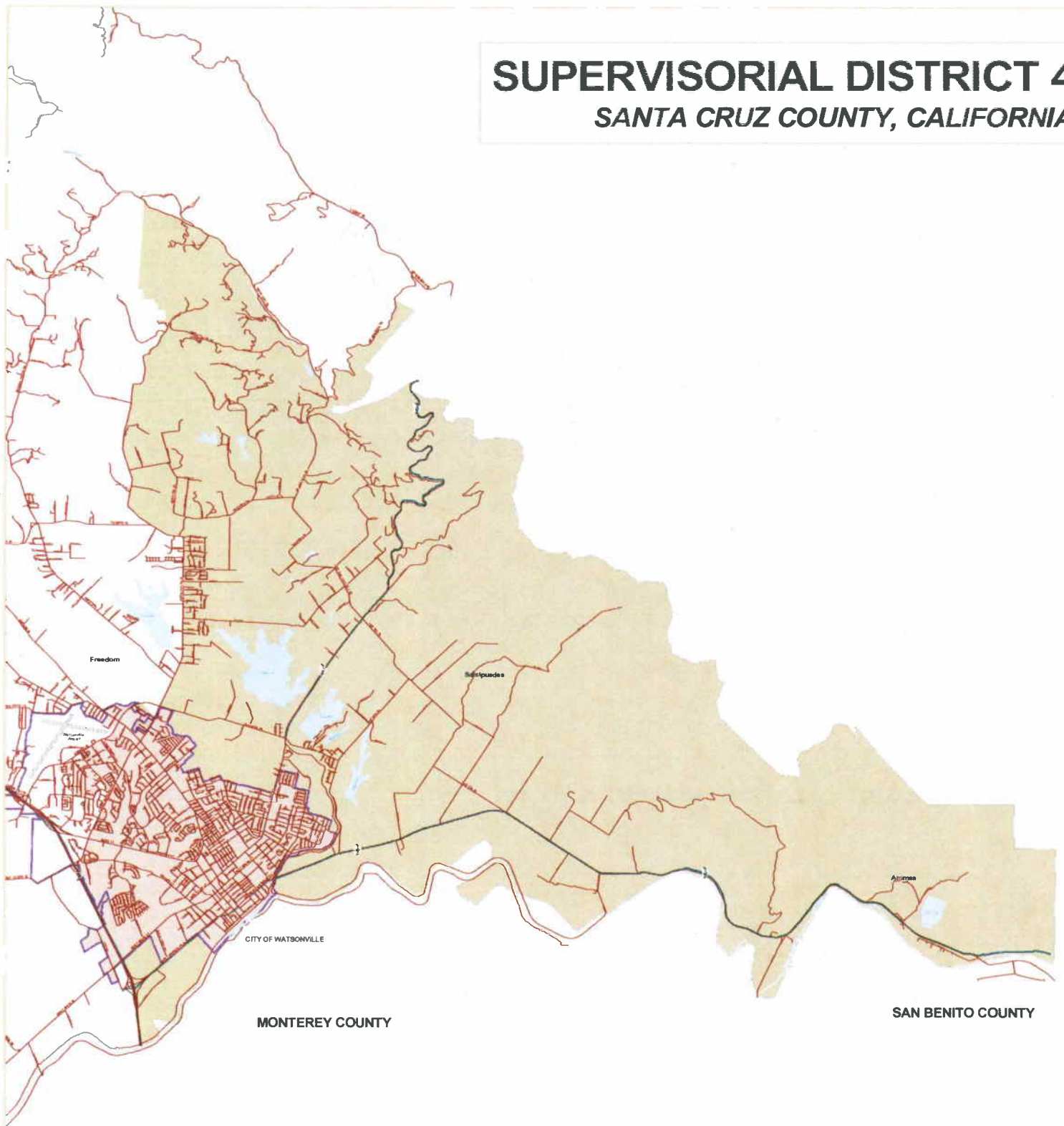
SUPERVISORIAL DISTRICT 3

SANTA CRUZ COUNTY, CALIFORNIA



SUPERVISORIAL DISTRICT 4

SANTA CRUZ COUNTY, CALIFORNIA



Legend

-  Supervisorial District 4
-  City Limits





SUPERVISORIAL DISTRICT 5

SANTA CRUZ COUNTY, CALIFORNIA



Legend

- Supervisorial District 5
- City Limits

